

NW 1/16
22-259

CHAINS

ESTABLISHED CORNERS FOR STATE OF OREGON-DEPARTMENT OF FORESTRY
(See official plat)
Northwest One Sixteenth corner for Section 22, T2S, R9W,
W.M., Tillamook County, Oregon.

ESTABLISHED

Var. 21 1/2 E

Set 1 1/2" x 36" galvanized iron pipe with 3" bronze cap marked "OREGON STATE BOARD OF FORESTRY NW 1/16 S22 1961 RS401", 34 inches in ground, and from which a:

- 14" Fir bears N26E 10.6 ft.; scribed NW 1/16 S22 BT RS401.
- 15" Fir bears S10 1/2 W 22.8 ft.; scribed NW 1/16 S22 BT.

Set 4" x 4" x 52" white painted Cedar post 1.0 ft. SE of corner pipe.
Oregon State Forestry Department metal location poster on 14" Fir BT.

CS 1/16
22-259

Center South One Sixteenth corner for Section 22, T2S,
R9W, W.M., Tillamook County, Oregon.

ESTABLISHED

Var. 21 1/2 E

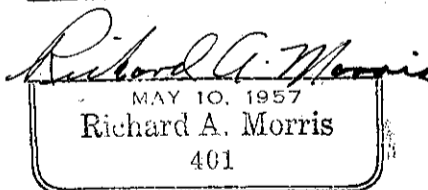
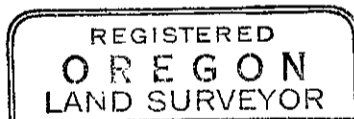
Set 1 1/2" x 36" galvanized iron pipe with 3" bronze cap marked "OREGON STATE BOARD OF FORESTRY S 1/16 C--C S22 1961 RS401", 32 inches in ground, in mound of rock, and from which a:

- 16" Hemlock bears N52E 52.2 ft.; scribed CS 1/16 S22 BT RS401.
- 18" Hemlock bears N68 1/2 W 46.0 ft.; scribed CS 1/16 S22 BT.

Set 4" x 4" x 52" white painted Cedar post 1.0 ft. SW of corner pipe.
Oregon State Forestry Department metal location poster on 16" Hemlock BT.

Dated November 9, 1961

Established by Harold J. Russell under my direction.
Harold J. Russell, Engineering Tech. I



Present and witnessed by E. Nylund
A. Duncan
D. Spiesschaert