



South Tillamook County Transportation Projects

Pacific City/Woods Chamber of
Commerce

February 3, 2015

Liane Welch, P.E.

Director

503.842.3419

lwelch@co.tillamook.or.us



Public Works Road Department

Performance Report Summary

Resort Drive MP 1.3

Resort Drive MP 2.1

Sandlake Road MP 10.5 culvert repair

Whalen Island Bridge Replacement

Woods Boat Ramp

Paving List Summer 2015

Town Lake culvert

Little Foland Creek Culvert Replacement

USFS design; Horn Creek, Moon Creek, Boulder Creek

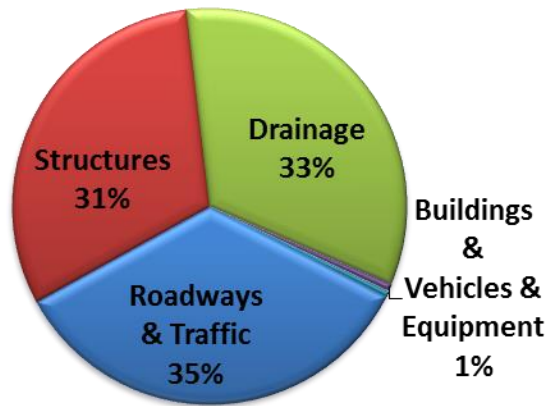
Cape Kiwanda Visioning and Safety Improvements

Neskowin Emergency Egress

Ridge Road Development

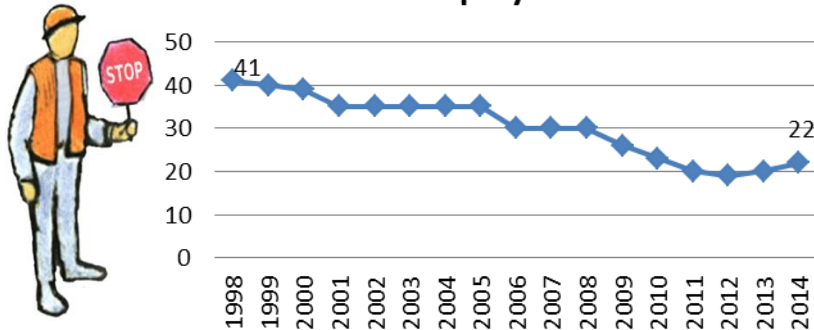
What does the Road Department manage?

Tillamook County Road Network
\$844 Million



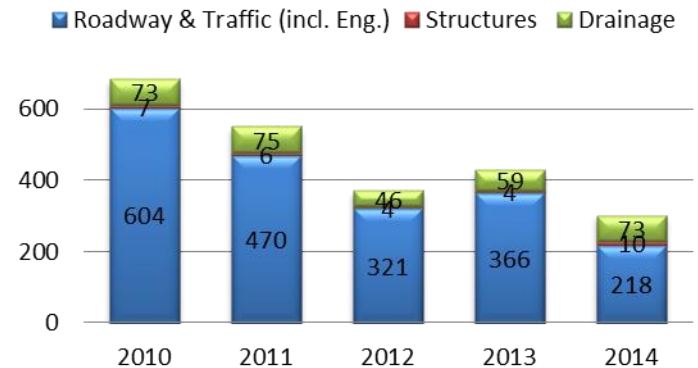
County Road Services	
Assets	Services
263 paved miles	Vegetation Management
65 miles gravel roads	Traffic Safety
101 bridges	Materials/Stock Piles
3300 culverts	Service Request management
7 levees	Emergency Response
5,400 signs	Engineering Services (permits & capital projects)
363 miles pavement markings	Fleet Management
10 miles guardrails	
15 buildings	

Employees



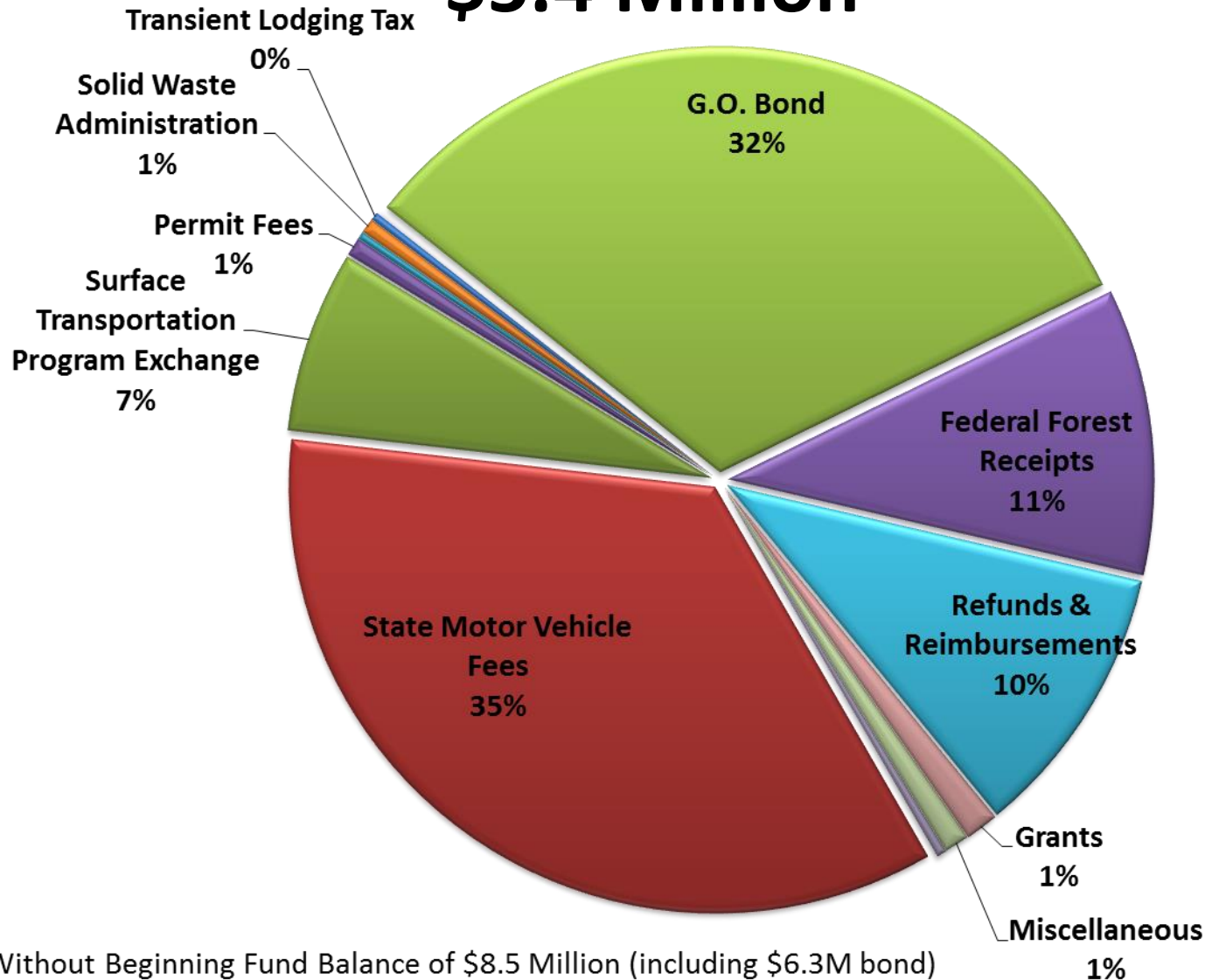
Service Requests

2010-2014



Road Department Revenues FY 2014

\$5.4 Million

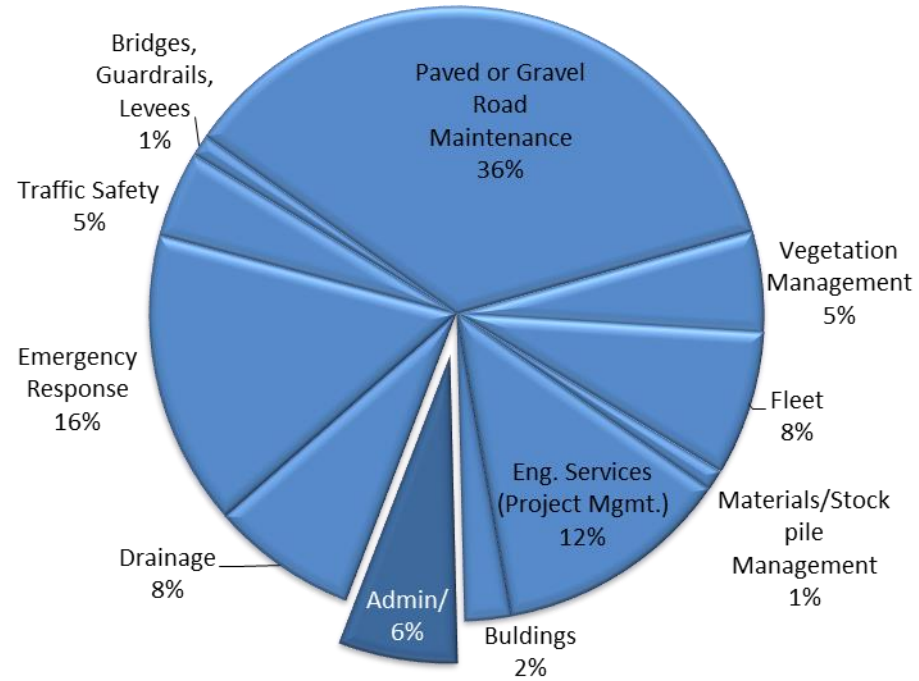
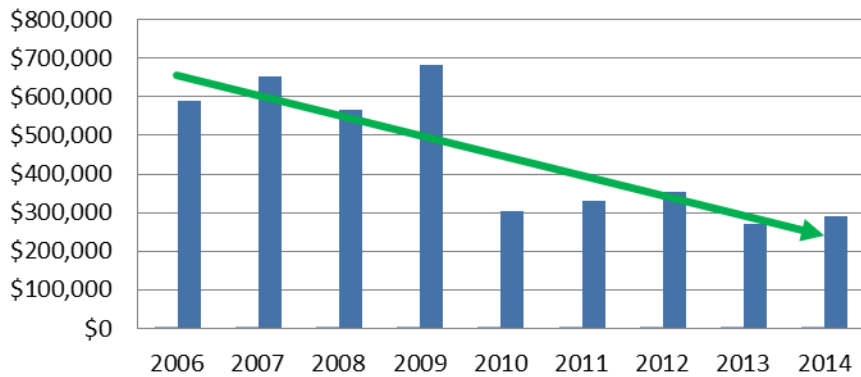


*Without Beginning Fund Balance of \$8.5 Million (including \$6.3M bond)

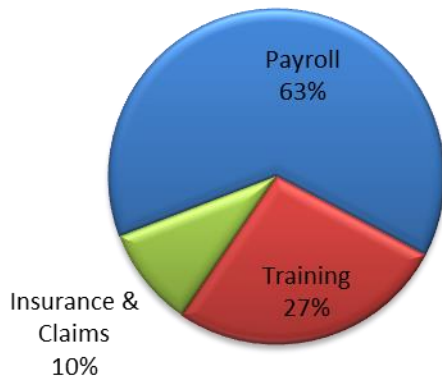
How do we manage everything?

Administration 2005-2014

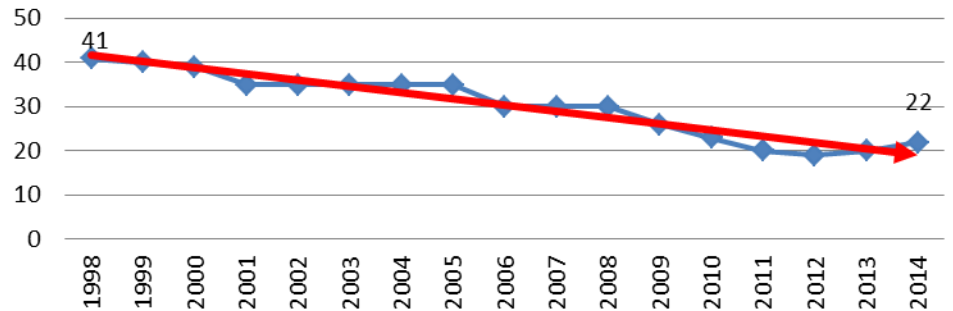
Overhead allocated to Services beginning in 2010



2014 Total Administration \$290,000



Added 2 employees but still 46% fewer than in 1998



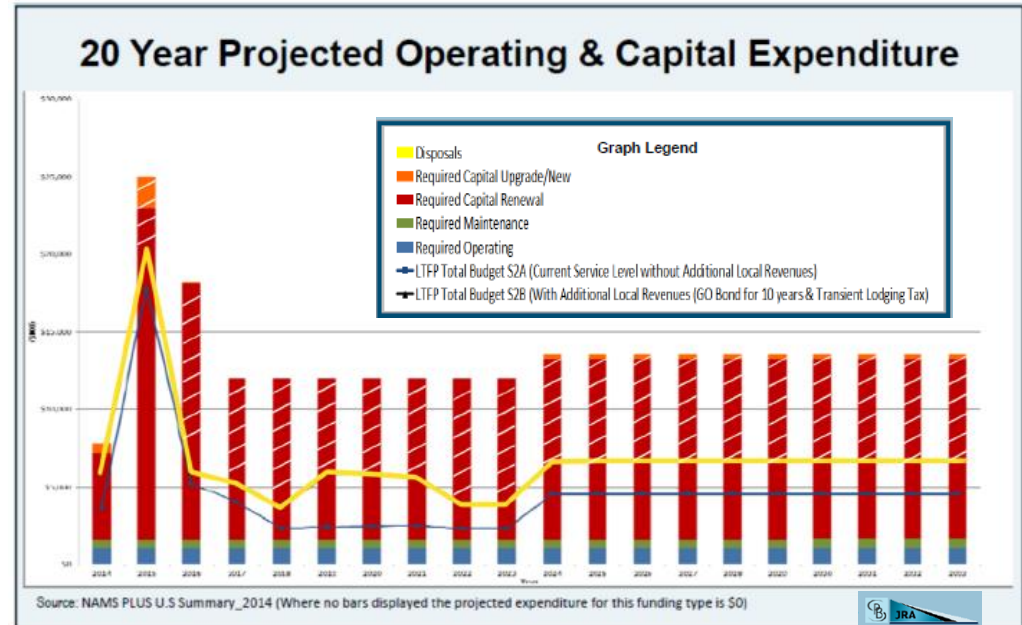
Federal Funds \$1.3 Million to County Administered by ODOT

Cape Mears Loop Geotechnical Study	\$202,000
Foss Road MP 6.5 Culvert replacement	\$357,000
Lommen Bridge Bridge Design	\$514,000
Resort MP 1 Slope failure design	\$135,000
Resort MP 2.1 Slope failure design	\$33,000
Wyss Bridge Bridge design	\$105,000

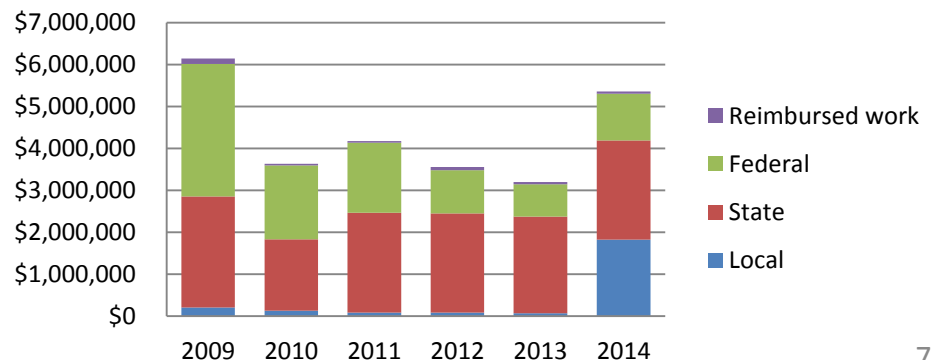


New Local Revenues help but aren't enough to meet all needs

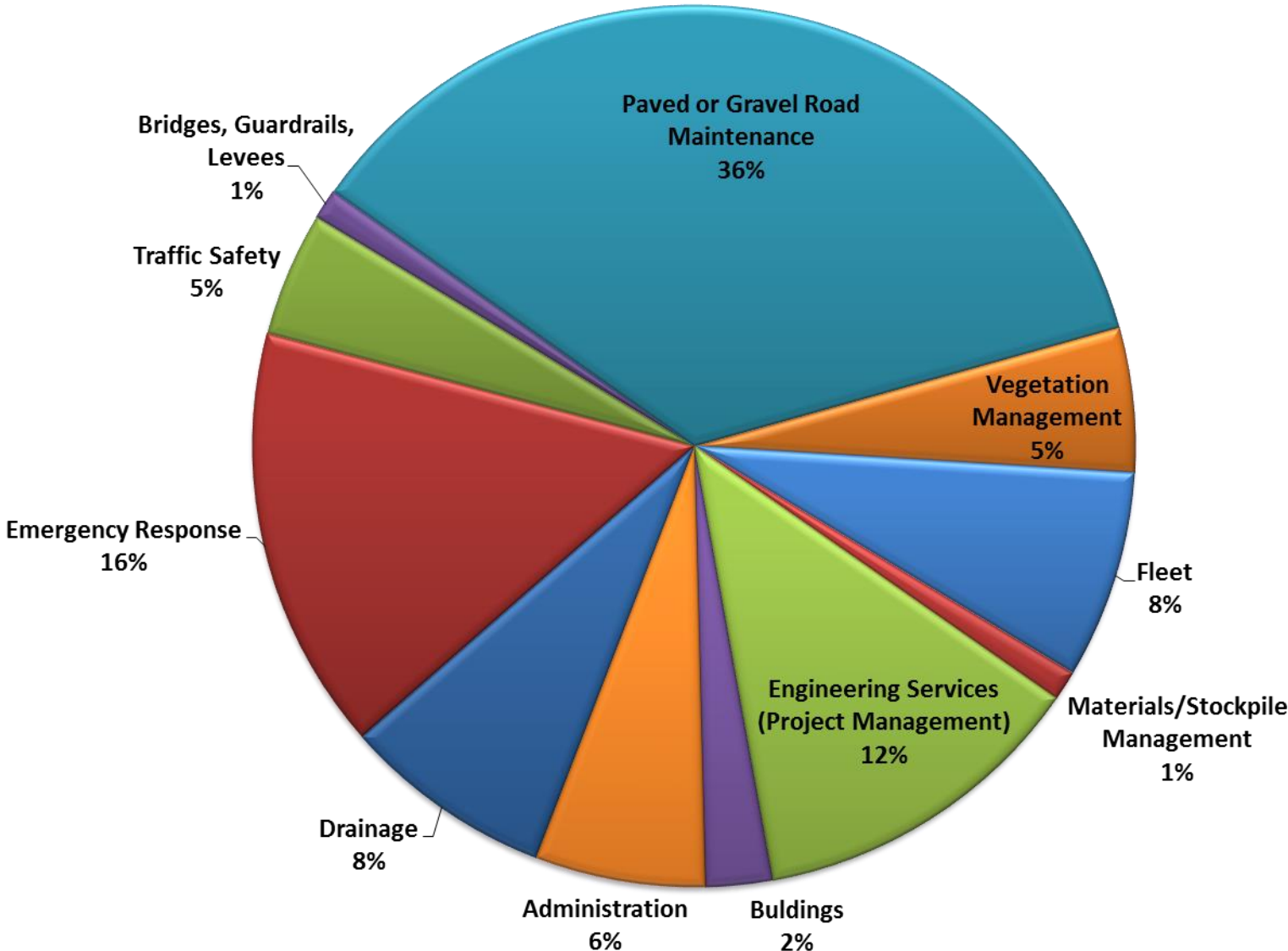
Local revenues - GO Bond and Transient Lodging Tax – approved by voters in 2013 to address road services -- are making a difference in slowing system deterioration and addressing critical needs. However funding (yellow line) isn't enough to manage all lifecycle costs (red striped bars above the yellow line) even with these new local revenues.



Local revenues were approved by voters in FY 2014



FY 2014 Tillamook County Road Expenditures - \$4.7 Million (w/Admin. Allocated)



Public Safety is our highest priority

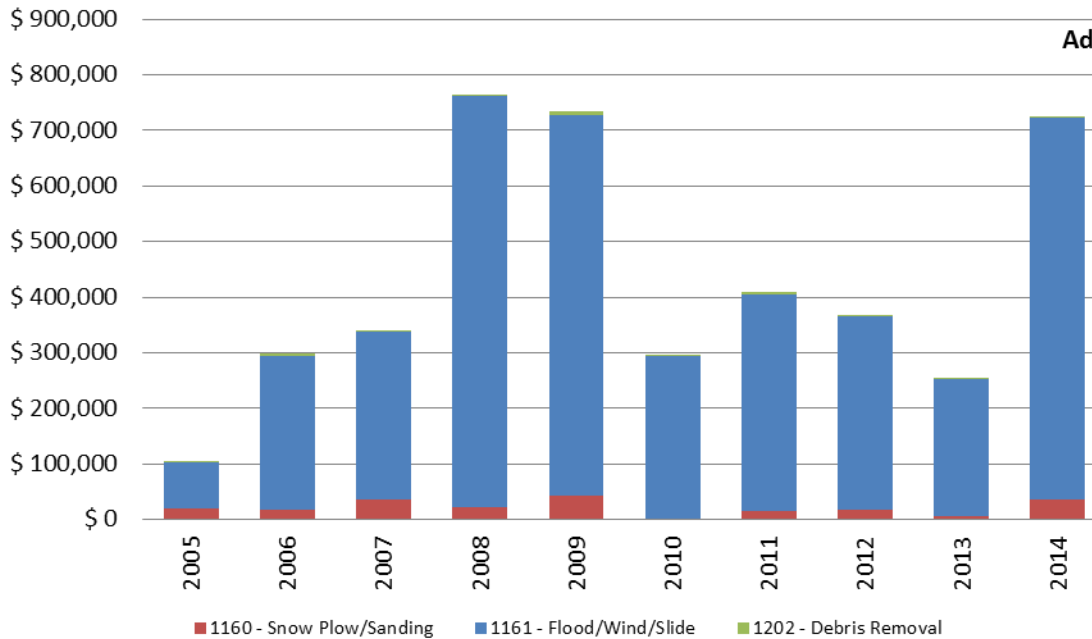
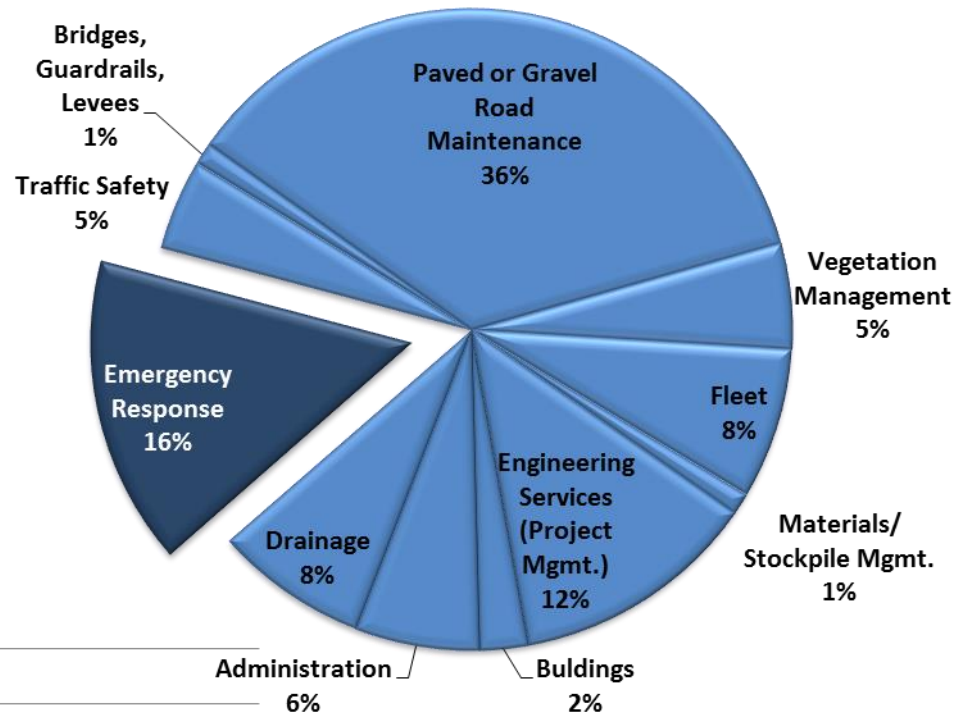
- ✓ Storm response
- ✓ Completion of Kilches River Road, slide repair from the 2011 storm (\$500,000)
- ✓ Response to landslides and 911 callouts
- ✓ Emergency preparedness for managing Cascadia Earthquake “Filling the Void of Leadership”
- ✓ Neskowin Emergency Egress design



The Tillamook County Road crews snow plow and sand County roads during February 2014 snow emergency.

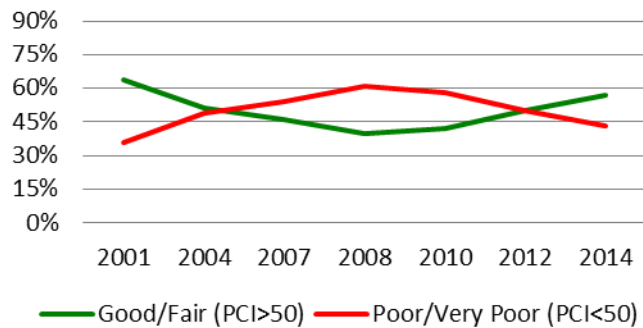
Emergency Response

\$500,000 Kilches River Road
(2011 storm)



We were able to improve the condition of paved roads, accomplish more & improve the quality of how we did paving work

**Pavement Condition is Improving
2001-2014**



“The PCI has increased from a low of 45 in 2008 to 54 in 2012. This is due to the county having made better pavement management decisions regarding maintenance treatments, as well as reducing the inventory of paved streets over the last 6 years. Additional funding from the recent road bond, signaling the willingness of local citizens to pay for increased services, has also helped improve the condition of the paved road network.”

*Pavement Management Program Budget Options Report,
Capitol Asset & Pavement Services, September 2014*

6.8 Miles Paved in Summer 2013

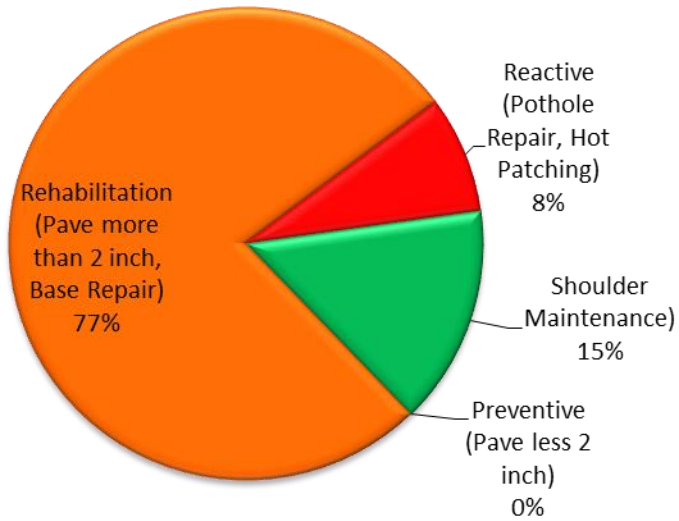
Tideland Road	Yellow Fir Road
McKimmens Road	South Prairie Road
Miami-Foley Road	Kilches River Road
Beulah Reed Road	Ekloff intersection
Sollie Smith Road	Clements Corner
Bilyeu Road	Brickyard Road
Bewley Creek Road	Hillsdale Road
Tideland Road	Whiskey Creek Road
Nielson Road	Cape Lookout Road
Jenck Road	Meda Loop
Woods-Cloverdale Road	McPhillips
Sandlake Road	Mill Road
Blaine Road	



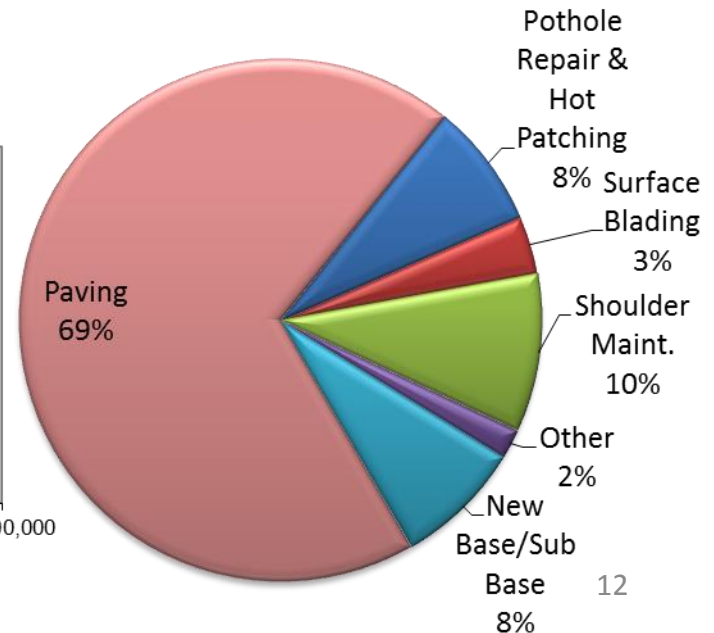
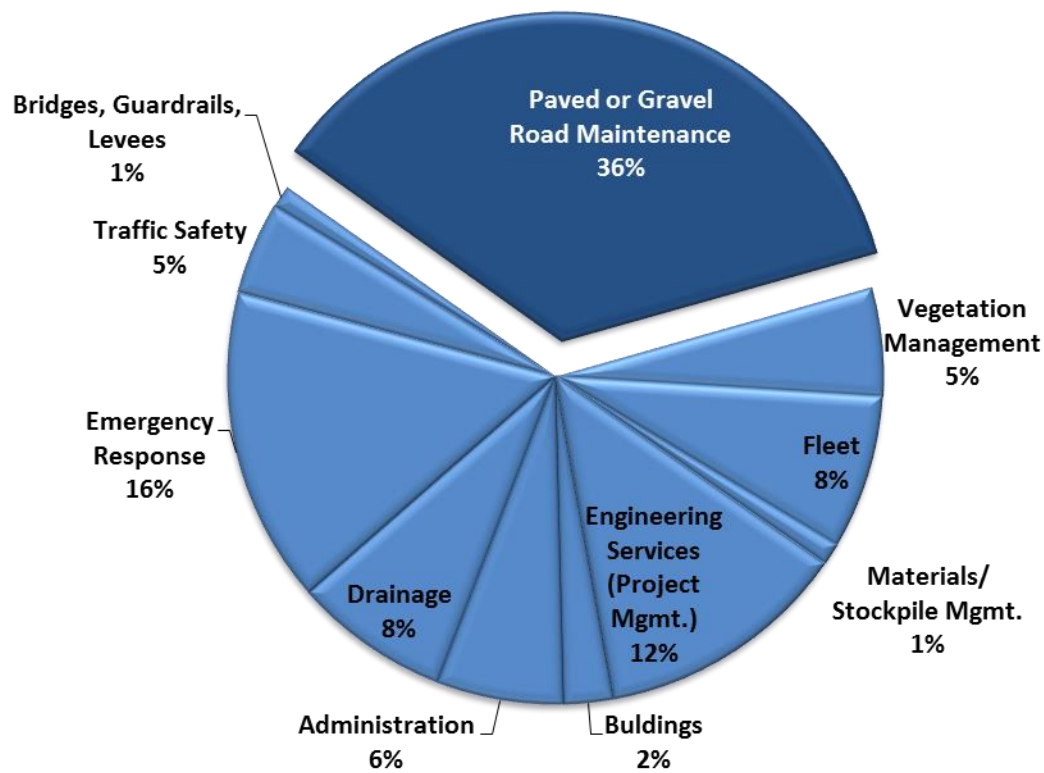
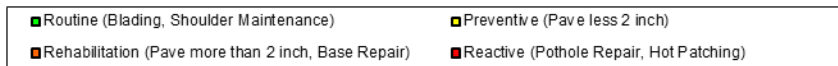
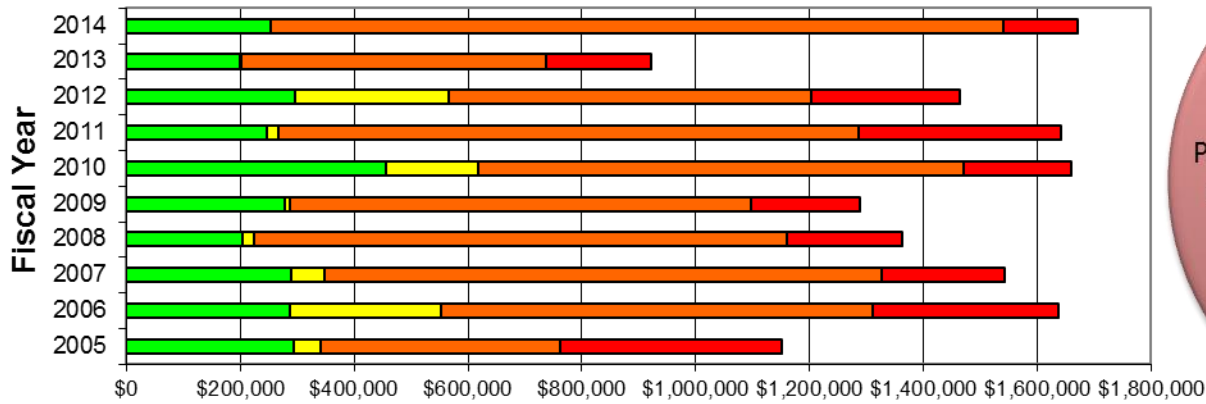
Rehabilitating Brooten Road June 2014

Our biggest expense is paving

\$1.7 Million, up 81%

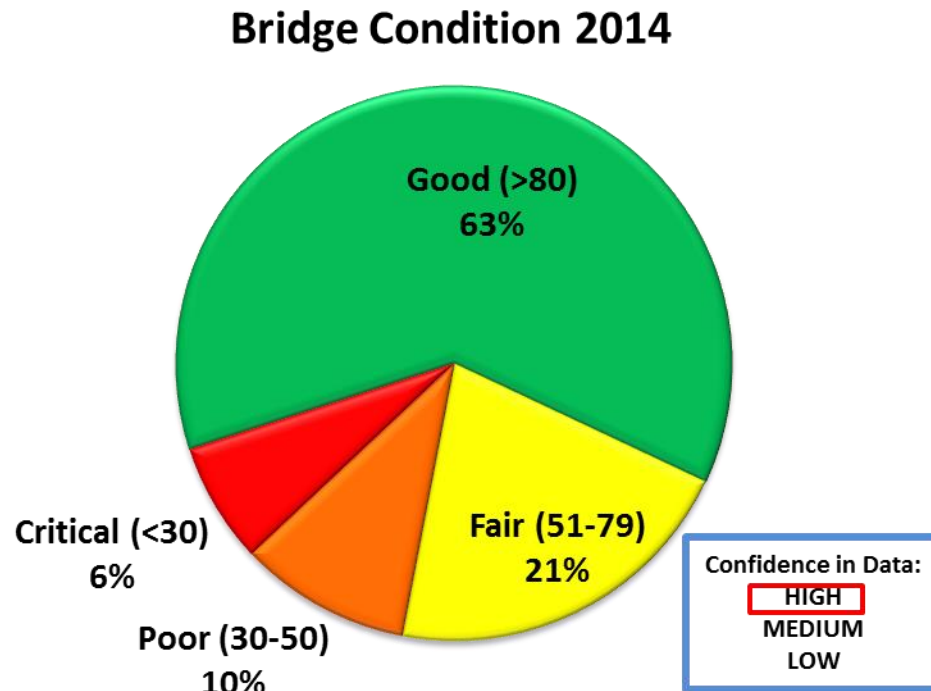


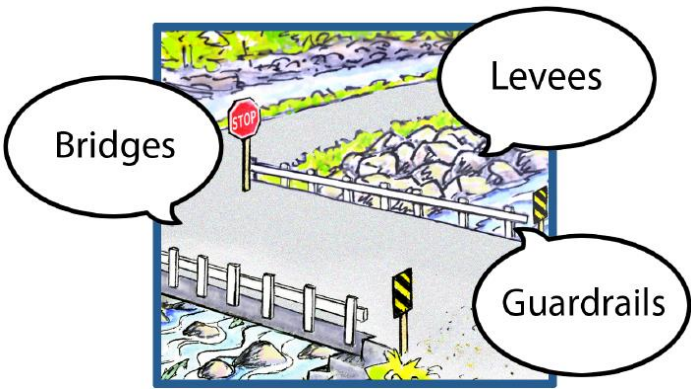
Road Lifecycle Expenditures 2005-2014



There are 101 County bridges

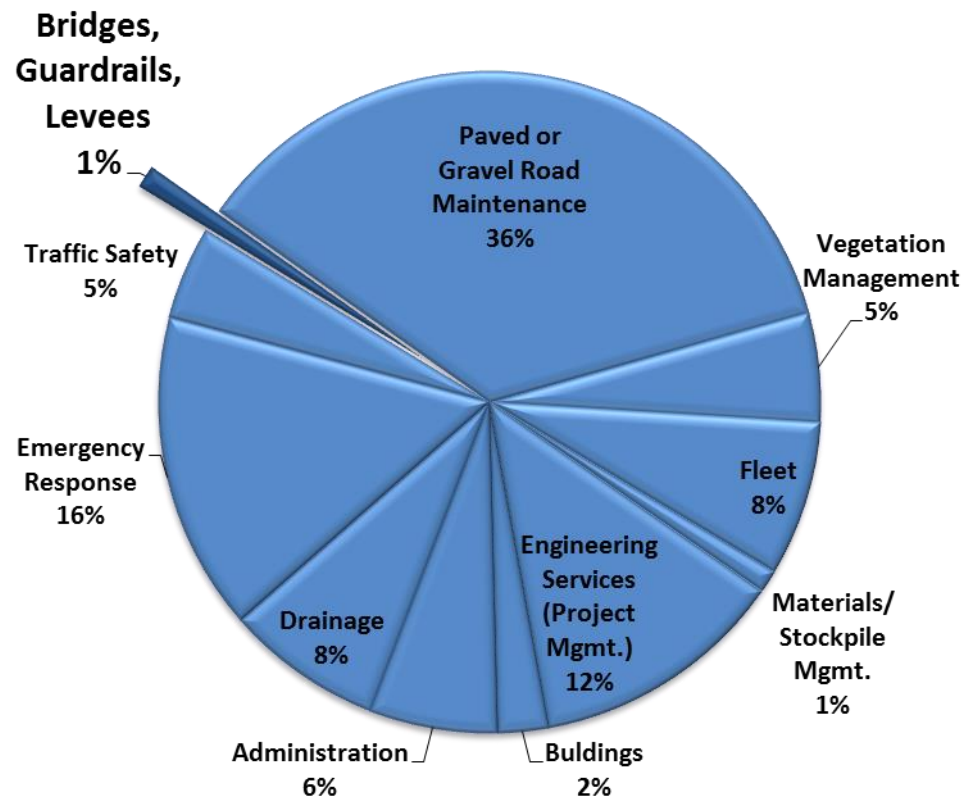
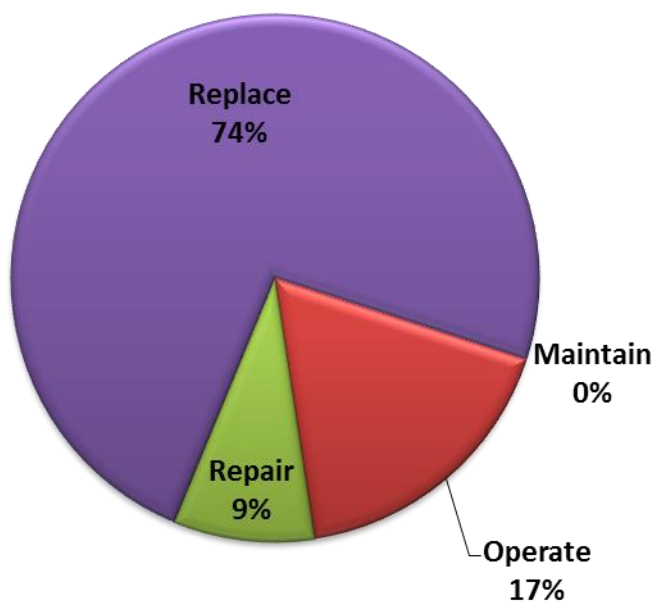
17% are in Poor or Critical Condition





Structures expenditures are down 61%

Bridge Management Expenditures 2014
\$51,732

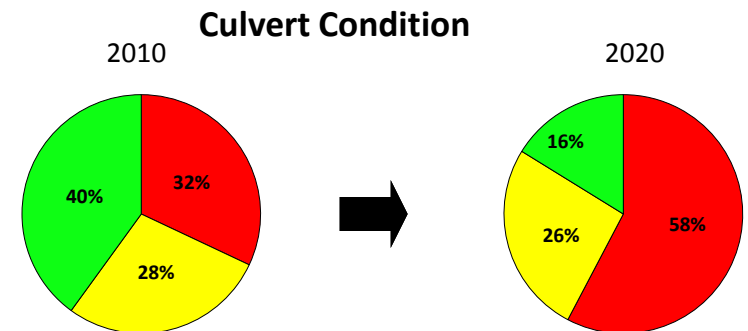
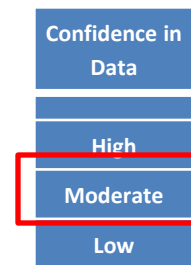


Drainage on county roads was rated an Extreme risk given the wet environment and increasing frequency and severity of weather events.

Bear Creek Culvert removed on Brickyard Road

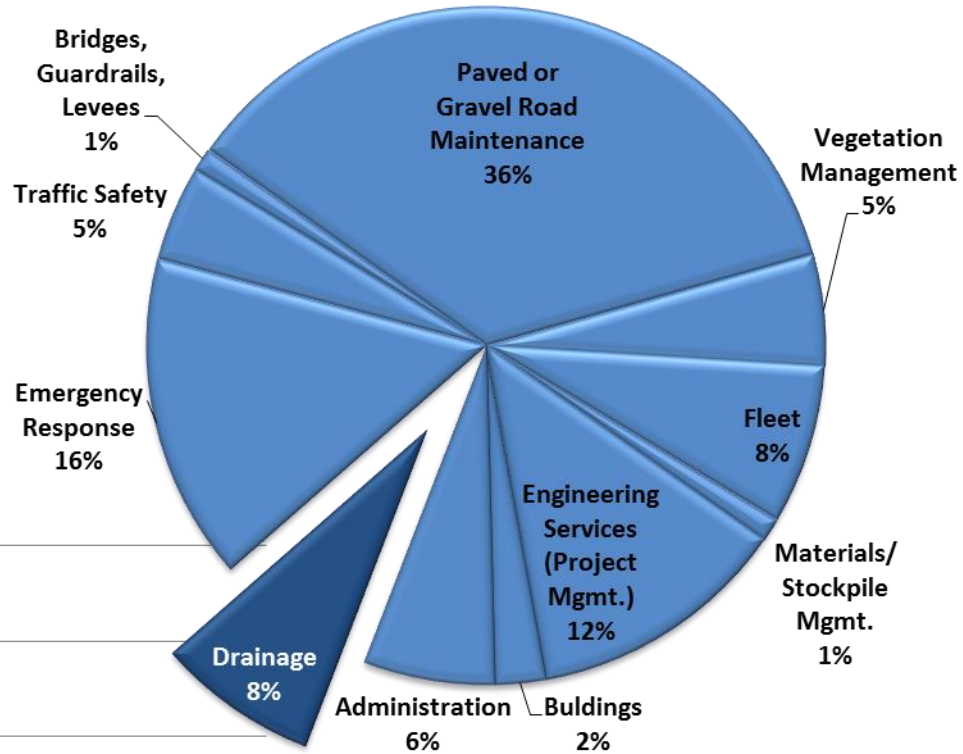
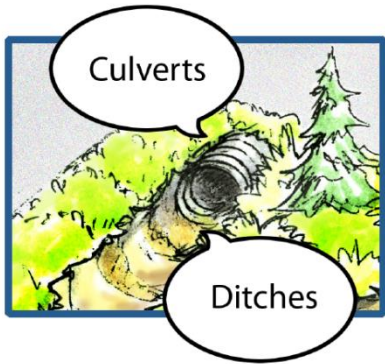


- We repaired or replaced 863 feet of culverts, including replacing culverts on Brickyard Road & Foss Road.
- In FY 2015, another 20% of culverts will be inspected and their condition rated.

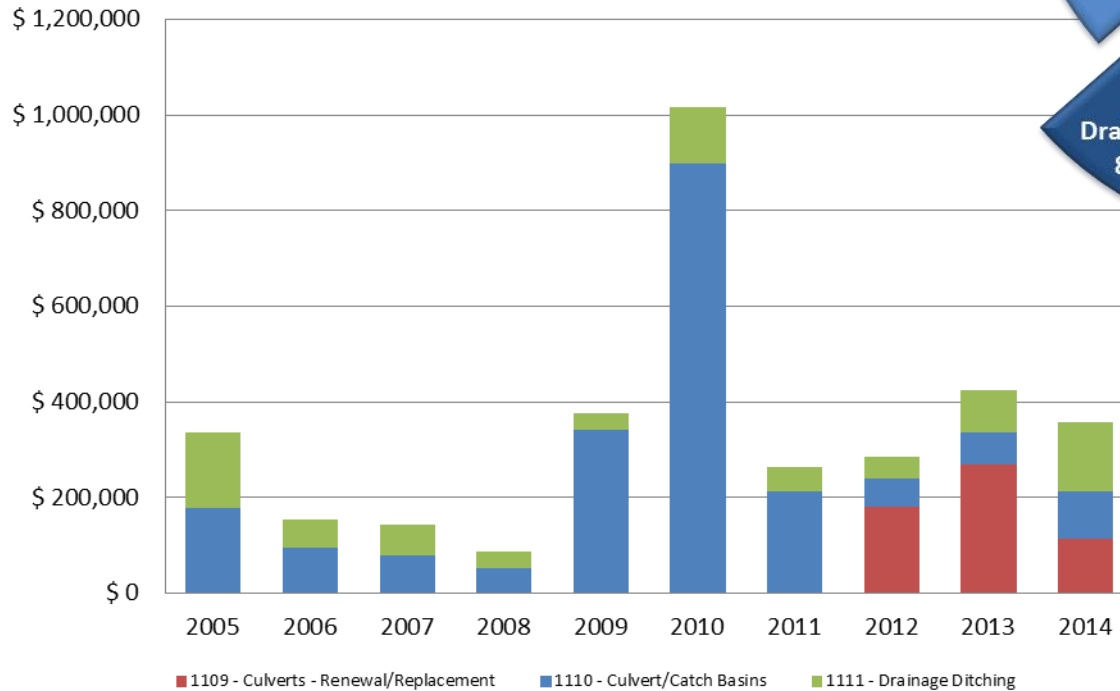


32% of the County's 3,300 culverts are in Poor condition

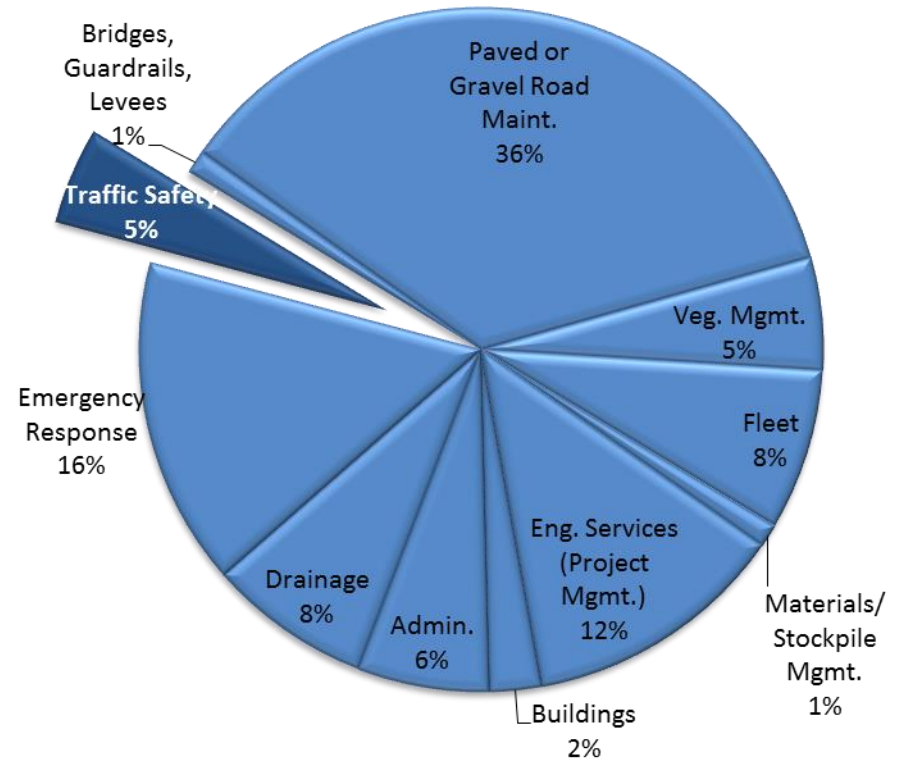
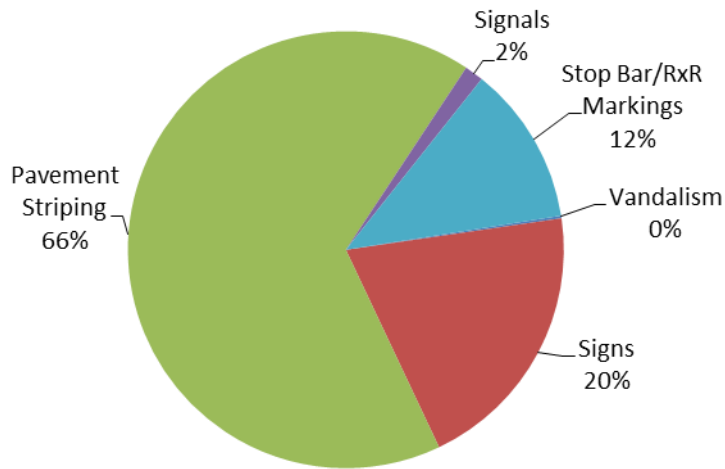
Drainage



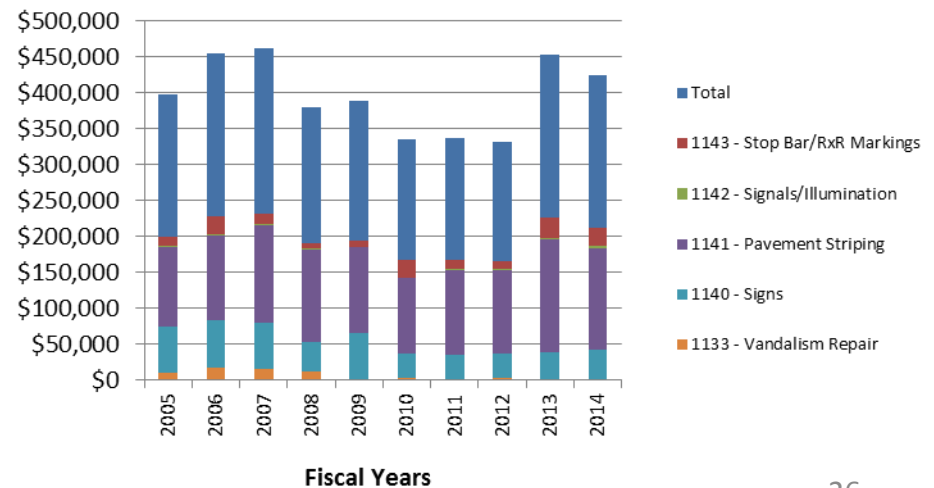
\$359,000, down 15%



Traffic Safety



Signs are being systematically updated. Priority is given to regulatory signs with more than 50% replaced in 2014. Street name signs are fading and in Poor condition. These signs will be replaced by the end of May 2015.



County Road Management Strategy

Ensure roads are safe to travel on throughout the County by slowing long term deterioration

- Year 1 (2014) Provide small patches Countywide to hold the system together.
- Year 2 (2015) Focus expenditures on high speed, high volume roads and those that provide economic value to the community.
- Year 3 (2016) Move into the neighborhoods Countywide for safety and emergency response.

Revenue	2014	2015	2016	2017	2018	Total
GO Bond	\$ 1,717,141	\$ 2,936,063	\$ 1,861,639	\$ 575,112	\$ 575,112	\$ 7,665,067
Road Budget	\$ 2,470,260	\$ 2,470,260	\$ 2,470,260	\$ 2,470,260	\$ 2,470,260	\$ 12,351,300
Secure Rural School	\$ 600,000					\$ 600,000
Transient Lodging Tax	\$ 16,000	\$ 350,000	\$ 400,000	\$ 400,000	\$ 400,000	\$ 1,566,000
Total	\$ 4,803,401	\$ 5,756,323	\$ 4,731,899	\$ 3,445,372	\$ 3,445,372	\$ 22,182,367

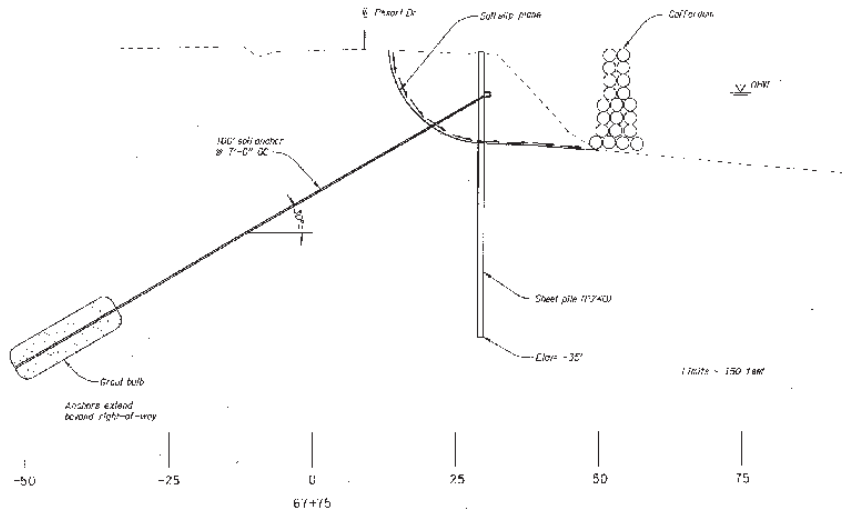
Note 1: Original budget of \$2,200,000. This was changed during the budget process. We had a carry over from FY 14 of 522,063.69. New total \$2,936,063

Note 2: Over budget in FY 15 of \$100,000 as of 8/27/14. reduce this amount by \$200,000+/- for contingency. Original budget \$2,034,117. New budget \$1,861,639

Resort Drive MP 1.3
Slide Repair

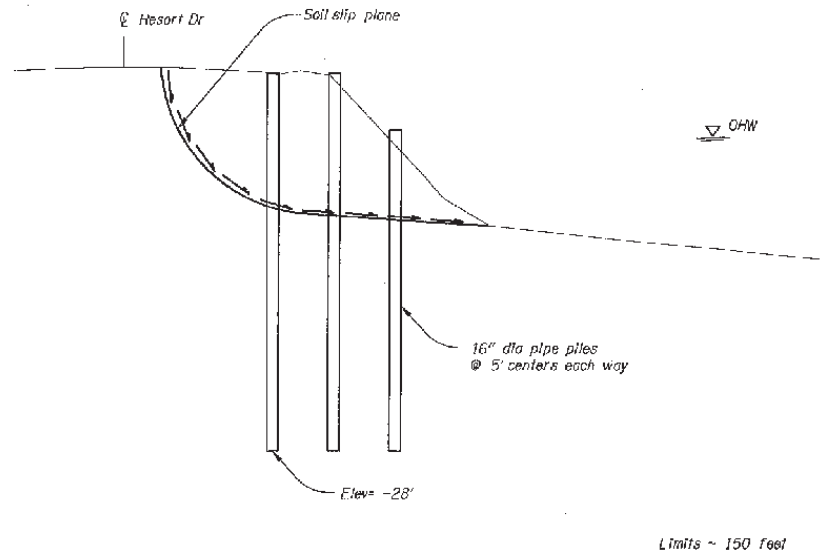


Resort Drive MP 1.3 Repair cont.

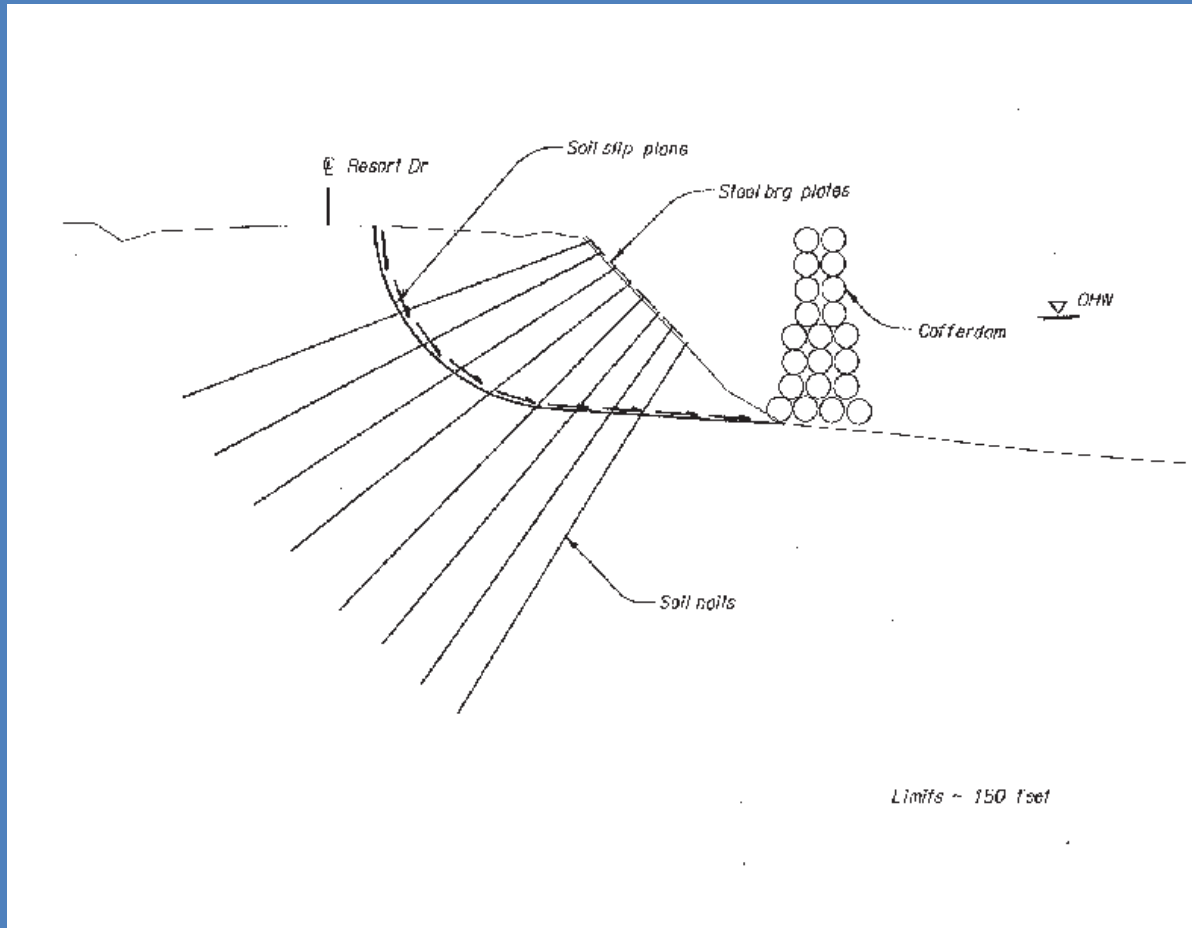


Alternative 1
Tied Sheet Pile = \$1,404,000

Alternative 2
Pipe Pile Grid = \$750,000

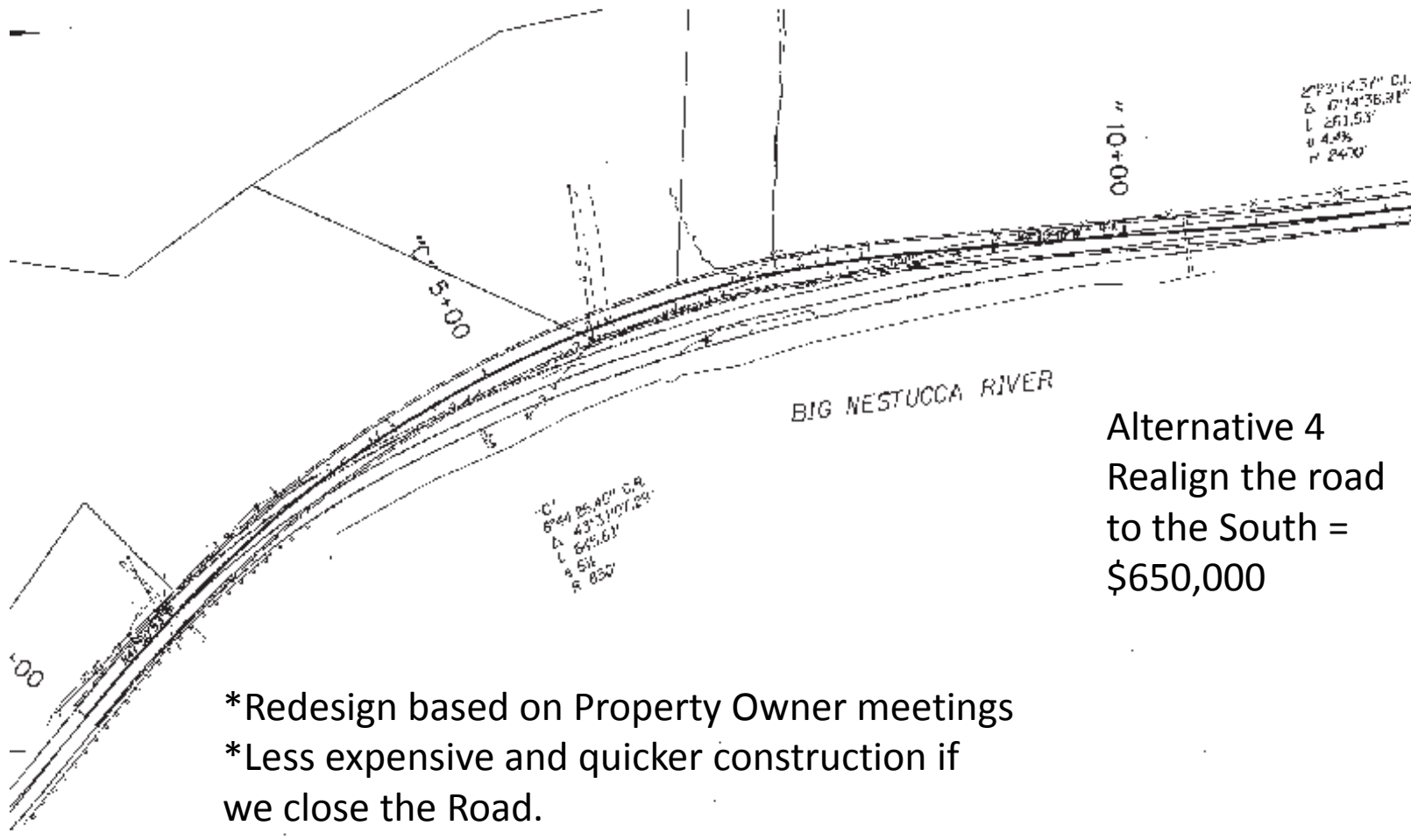


Resort Drive MP 1.3



Alternative 3
Soil Nails
\$804,000

Resort Drive MP 1.3 cont.



Alternative 4
Realign the road
to the South =
\$650,000

- *Redesign based on Property Owner meetings
- *Less expensive and quicker construction if we close the Road.
- *Treat Stormwater off site at Town Lake
- *We are in final design

Resort Drive MP 2.1



Resort Drive MP 2.1 Alternative Analysis

- Option A – Bridge viaduct (1/2 bridge) = \$1.4 million *(Just starting design process, closing the road will save time and money)*
- Option B – Rock Buttress (hard to permit) = \$1.45 Million
- Option C – Soldier Pile Wall = \$2.1 Million
- Read the entire report from our Website www.co.tillamook.or.us/gov/pw

Sandlake Road Culvert at Town Lake

Partner with ODFW to design and replace the non-functional dam at the outlet of Town Lake in 2014



2015 replace the failed culvert under the road leading from Town Lake

Create Water Quality Facility for Resort Drive 1 and 2 projects adjacent to this culvert system

Sandlake Road MP 10.5 culvert repair

Failure of the joint, lead to erosion problem

Temporary repairs by Public Works Staff



Project in final design



Whalen Island Bridge Replacement



Federal Highways paying 90%, local match 10%

Project estimated cost \$2.1 million

Initiating Design process
Hired David Evans and
Associates for

Construction scheduled for
2016



Whalen Island Bridge Posting

Paving List Summer 2015

- Slab Creek Road – about 1.5 miles from Hwy 101 (Contract)
- Savage Road – Cascade Head
- Mill Road – Cloverdale
- Parkway Drive – Cloverdale
- Cape Kiwanda – PC
- Woods Bridge approaches
- Note: Portions of these roads will be paved.



Woods Boat Ramp



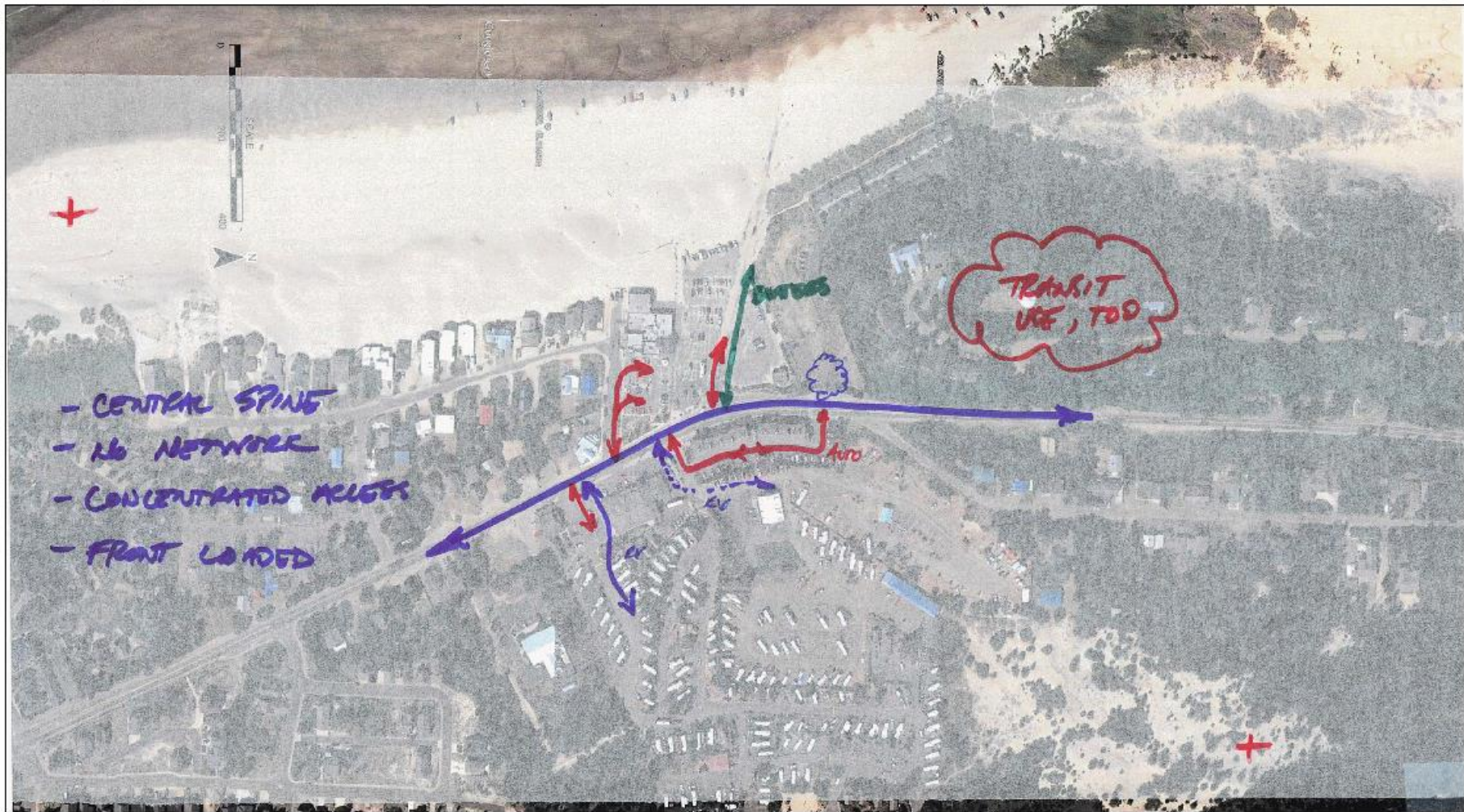
Meeting with PC/Woods CAC February
21, 2015



Cape Kiwanda Traffic Safety

Cape Kiwanda Planning Study

January 2015



- CENTRAL SPINE
- NO NETWORK
- CONCENTRATED ACCESS
- FRONT LOADED

TRANSIT USE, TOO

Sketch
Pacific City, OR

Figure
2

Tillamook Nestucca Fish Passage Partnership Culvert Replacements

- 2 – Moon Creek Culverts
- Horn Creek, Old Woods Road
- Little Foland Creek, Bixby Road
- Boulder Creek, Blankenship Road
- 2 - Bower Creek, Meda Loop



Neskowin 2nd Ingress/Egress

- Over 300 homes with one ingress/egress
- Fire Chief sent letter to Board regarding safety
- Citizens have raised \$100,000 to help pay
- State looking at \$150,000
- In design process



- Questions/Discussion
- Liane Welch, PE
- lwelch@co.tillamook.or.us
- 503-842-3419