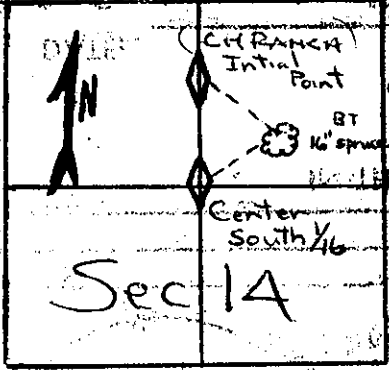


TILLAMOOK COUNTY REWITNESS #1024



SEC. 14 T 6S R 11 W., WM.
 COR. S.E. #

HISTORICAL: Tie Between Center South 1/6 & Int. Pt. of Cascade Head Ranch - From B.T. to the Initial Point is 21° 30' Left Interior 103.5 feet

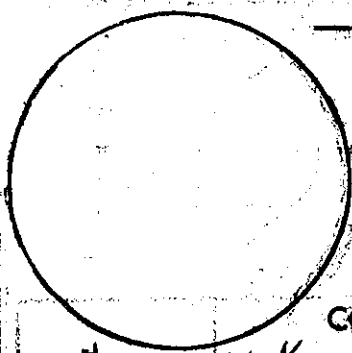
MAP B-532

CONDITION	FOUND:
	1/2" Iron Rod ± 6" High set by STEERE

COMMENTS:

REWITNESS

I SET



"x" "x" " Post N.W. feet
 " Hat Section S. E.

NEW ACCESSORY:

16" SPRUCE N 21 1/4° E (Slope) 99' @ 2° 15'

COMMENTS: Related Information, in order to locate Center South 1/6 of Section 14, see maps A-968 & A-1162

IN THE PRESENCE OF:

Skinner
 Duncan
 Arthur

DATE: 11-28-67

PHOTO#:

J.L. Carlich County Surveyor

TITLE

* - County corner tag affixed.