

|    |    |
|----|----|
| 10 | 11 |
| 23 | 22 |

TILLAMOOK COUNTY REWITNESS #880  
 SEC. 8 T 55 R 10 W., WM.  
 CW 1/16 COR.

HISTORICAL: G.L.O. Pg. 21 5510 1872

|            |        |     |
|------------|--------|-----|
| BK. 10     | Pg. 54 | MAP |
| HAYSE. 123 |        |     |

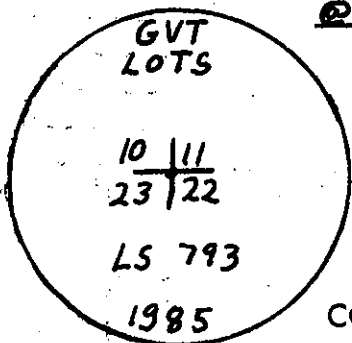
CONDITION GOOD FOUND; STONE MARKED XVI IN EAST ROOT OF 48" SPRUCE TREE

|           |           |                    |               |
|-----------|-----------|--------------------|---------------|
| NOT FOUND | 5" ALDER  | N. 37° W. 82 LKS.  | BK. 10 Pg. 54 |
| NOT FOUND | 14" ALDER | S. 60° W. 198 LKS. | G.L.O. Pg. 21 |
| NOT FOUND | 8" ALDER  | N. 6° W. 404 LKS.  | G.L.O. Pg. 21 |

COMMENTS:

REWITNESS

1 SET 1 1/2" IRON PIPE WITH 3" BRASS CAP IN 10" CONCRETE CYLINDER  
 @ POSITION OF FOUND STONE MARKED XVI  
 \* 60" Hat Section 50 FEET EAST



NEW ACCESSORY: SCRIBED BY LEONARD, WHITMORE

|            |              |                |
|------------|--------------|----------------|
| 12" SPRUCE | S 43° W 430' | CW 1/16 SB B.T |
| 36" SPRUCE | N 64° E 540' | CW 1/16 SB B.T |

DISTANCES MEASURED TO NAIL WITH BRASS WASHER IN FACE

COMMENTS: THIS CORNER IS LOCATED ± 2000' EAST OF A GRAVEL ROAD IN AN OLD E-W FENCE LINE IN THE ROOTS OF A 48" SPRUCE TREE. LAYED FOUND STONE ALONGSIDE MONUMENT.

IN THE PRESENCE OF: DAN MCNUTT AL DVORAK

DATE: 3-18-85

PHOTO#:

TITLE

\* = County corner tag affixed.

