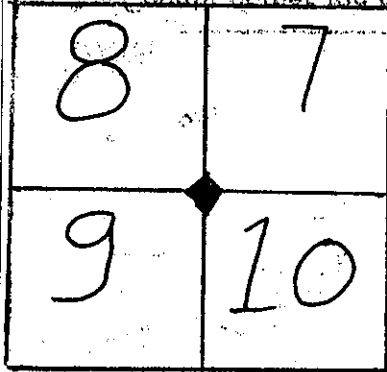


GOVERNMENT LOTS



TILLAMOOK COUNTY REWITNESS #879  
 SEC. 8 T 55 R 10 W., WM.

C-W-NW COR. 1/64

HISTORICAL: G.L.O. Pg. 24 5510 SET STONE 12"X10"X8" 1872

BK. Pg.		
10 55		
HAYSE 12A		

CONDITION GOOD

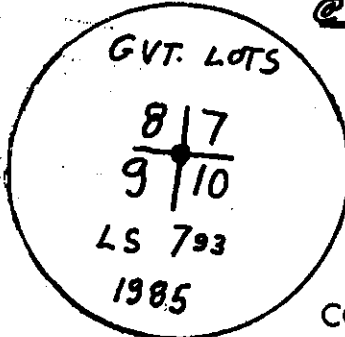
(ORIGINAL)  
 FOUND 13"X8"X7" STONE MARKED XXXII G.L.O. Pg. 5510  
 5" ELDER N. 26° W. 8LKS BK. 10 Pg. 55

GONE		

COMMENTS:

REWITNESS

1 SET 1 1/2" IRON PIPE WITH 3" BRASS CAP IN 10" CONCRETE CYLINDER  
 @ POSITION OF FD. 13"X8"X7" ORIGINAL STONE MARKED XXXII  
 \* 60" Hat Section SOUTH 1 1/2 FEET



NEW ACCESSORY:

* 40" SPRUCE	N. 78° W. 20' 0"	L8 B-T CS
* 20" SPRUCE	S. 2° W. 54' 5"	L9 B-T CS
DISTANCES MEASURED TO NAIL WITH BRASS WASHER IN FACE		
INT. L TO BTS = 99' 55"		

COMMENTS: THIS CORNER IS LOCATED ± 100' SOUTH OF REDBERG ROAD, ± 50' WEST OF A CREEK & ± 3' WEST OF AN OLD FENCE LINE WHICH WANDERS TREE TO TREE IN THIS AREA. LAYED FOUND STONE ALONGSIDE CORNER

IN THE PRESENCE OF: DAN McNUTT AL DVORAK

DATE: 4-18-85 PHOTO#:

\* = County corner tag affixed.

TITLE