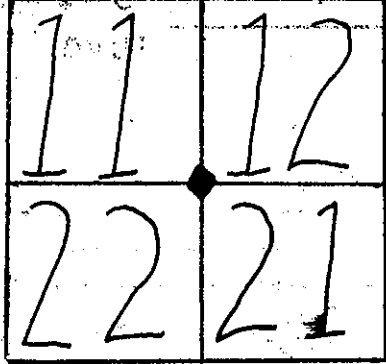


GOVERNMENT LOTS

TILLAMOOK COUNTY REWITNESS #877



E.C.W. 1/4 COR. SEC. 8 T 55 R 10 W., WM.

HISTORICAL: GLO. Pg. 22 5510 1872

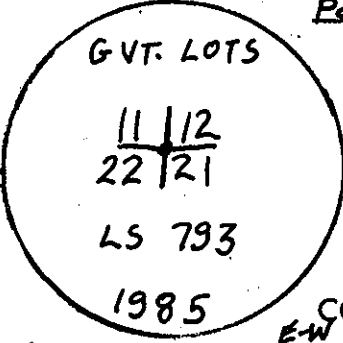
BK.	PAGE	MAPS
10	54	
HAYSE-123		
AMA3 86		

CONDITION	FOUND	9'x8'x10" STONE MARKED XX>11	AMA3 Pg 86
NOT FOUND	9" ALDER	N. 48°W 61 LKS	GLO. Pg. 22
NOT FOUND	9" ALDER	S. 30°W 18 LKS	" "
NOT FOUND	18" ALDER	N. 48°W 38 LKS	BK10 Pg 54
NOT FOUND	27" ALDER	S. 27°W 44 LKS	BK10 Pg 54
FOUND 25' HIGH STUMP (ROTEN)	72" SPRUCE	S. 20°30'W 60 LKS	AMA3 Pg. 86

COMMENTS:

REWITNESS

1 SET 1 1/2" IRON PIPE WITH 3" BRASS CAP IN 10" CONCRETE CYLINDER @  
 POSITION OF FO. 9'x8'x10" STONE MARKED XX>11 BK. AMA3 Pg. 86  
 \* 60" Hat Section NORTH 15 FEET



NEW ACCESSORY:

* 5 1/2" SPRUCE	S. 39°E 27'00"	L 21 B.T CS
* 9" SPRUCE	N. 41°E 15'13"	L 12 B.T CS

DISTANCES MEASURED TO NAIL WITH WASHER IN FACE.

COMMENTS: THIS CORNER IS LOCATED ± 4' SOUTH OF  
 A NEW FENCE LINE ± 30' WEST OF A NEW FENCE CORNER IN REMAINS  
 OF AN OLD FENCE LINE. LAYED FOUND STONE ALONGSIDE MONUMENT.

IN THE PRESENCE OF: DAN MCNUTT AL DIVORAK

DATE: 4-8-85 PHOTO#:

\* = County corner tag affixed.

TITLE