

1/64

COR.

8

T 5 S

R 10

W., WM.

HISTORICAL: G.L.O. Pg. 23 5510 1872

BK. Pg.	MAPS	
	B-668	

CONDITION GOOD

FOUND: 12" x 1" x 4" STONE

NOT FOUND	48" SPRUCE	N.45° E. 54 LKS	GLO Pg. 23
NOT FOUND	14" SPRUCE	S.35° W. 22 LKS	GLO Pg. 23
FD Now 2.6" STUMP SCISSORING VISIBLE ON PARTIALLY HEALED FACE	18" SPRUCE	S.47° 15' W 77 SR	MAP B-668
FD Now 2.0" STUMP SCISSORING VISIBLE HORIZ. DIST. 33' TO FACE	12" SPRUCE	N.36° E. 35 SD	MAP B-668

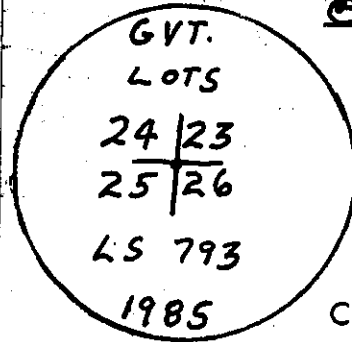
COMMENTS:

REWITNESS

1 SET 1 1/2" IRON PIPE WITH 3" BRASS CAP IN 10" CONCRETE CYLINDER

POSITION OF FOUND 12" x 1" x 4" STONE MARKED XXXII

* 60" Hat Section 15 FEET NORTH



NEW ACCESSORY: DISTANCES MEASURED TO NAIL WITH WASHER IN FACE

* 7" SPRUCE	S.12° E. 46 25'	NW 26 B.T CS
* 7" SPRUCE	S.77° W. 47 27'	L 25 B.T CS

COMMENTS: THIS CORNER IS LOCATED ± 100' NORTH OF AN OLD ROAD & ± 225' WEST OF A CREEK ± 5' WEST OF AN OLD CAT ROAD. ALSO FOUND A 1 1/2" I.P. ALONGSIDE STONE. LAYED STONE AND FOUND I.P. ALONGSIDE OF MONUMENT.

IN THE PRESENCE OF: DAN McNUTT AL DVORAK

DATE: 3-19-85

PHOTO#:

* = County corner tag affixed.

TITLE