

14 15
19 18

C.E. 1/16

SEC.

8

T 5 S

R 10

W., WM.

HISTORICAL: G.L.O. Pg. 22 5510 SET STONE 14" x 10" x 8" ¹⁸⁷² NOT FOUND

BK.	Pg.	
53	402	SET STONE 4" x 6" x 12"
AMA 3	86	" " " "

CONDITION GOOD

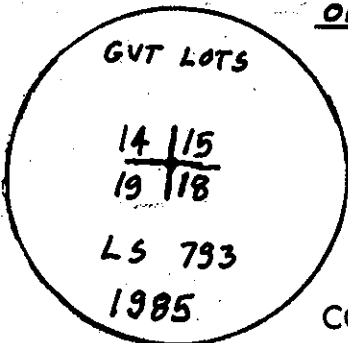
FOUND 12" x 7" x 3" STONE MARKED XVI 53 Pg. 402

& AMA 3 Pg. 86

COMMENTS:

REWITNESS

1 SET 1 1/2" IRON PIPE WITH 3" BRASS CAP IN 10" CONCRETE CYLINDER @ POSITION OF FOUND 12" x 7" x 3" STONE MARKED XVI BK 53 Pg. 402 * 60" Hat Section IN RLW FENCE 40' SOUTH



NEW ACCESSORY:

* 36" SPRUCE	S. 21° W. 3322	L 19 B-T CS
PP#	S. 61° E. 136 04	△ FACES CORNER
INT ∠ TO BTS = 82° 19'		
DISTANCES MEASURED TO NAIL WITH BRASS WASHER IN FACE		

COMMENTS: THIS CORNER WAS REWITNESSED FOR ITS

HISTORICAL VALUE ONLY AS IT DOES NOT APPEAR TO HAVE BEEN SET BY LEGAL METHODS BUT HAS BEEN USED AS CORNER SINCE 1902. CORNER IS LOCATED 20' NORTH OF E OF MEDA LOOP ROAD.

IN THE PRESENCE OF: DAN MCNUTT AL DVORAK

DATE: 4-18-85

PHOTO#:

* = County corner tag affixed.

TITLE