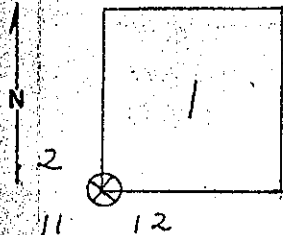


Index File No. _____ CORNER RECORD (SEARCH) (Ref. FSM 7151.4) Tract or Survey No. _____ Gor. No. E-21
 T. 5S R. 10W R.D. HEBO County TILLA.
 Merid. WILL. N.F. SINSLAW State ORE **#846**

CORNER DIAGRAM



DESCRIBE CORNER MONUMENT FOUND

DESCRIBE BEARING TREES OR OTHER OFFICIAL ACCESSORIES FOUND

FOUND 2" GALV. PIPE WITH SCREW CAP.
 FOUND 26" DOUBLE HEMLOCK, N. 42° E., 77 FT. TO SCRIBED FACE.

PHOTO IDENTIFICATION DATA

Photo No. _____
 Filed At. _____
 Object Ident. _____
 Ident. By _____
 Signature _____

I CHOPPED OPEN THE FACE AND FOUND SCRIBE MARKS CS S12 PROBABLY SET BY TILLA. CO. SURVEYOR

PLANE COORDINATE POSITION DATA

State _____ Zone _____
 X _____
 Y _____
 Estab. By _____
 Agency _____

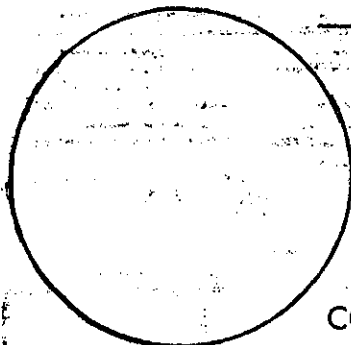
DESCRIBE CORNER LOCATION RELATIVE TO NEAR-BY FEATURES, ALSO HOW TO REACH CORNER

ANDERSON 1956.

Signature Leonard Whitmore Title Forestry Tech Div. Timber Headquarters Hebo Date 9-24-69 7100-52 (3/68)

REWITNESS

I SET



"x" "x" " Post N.W. feet
 " Hat Section S. E.

NEW ACCESSORY:

COMMENTS: backside of post is blank

IN THE PRESENCE OF: _____

DATE: _____

PHOTO# 40

= County corner tag affixed.

LITWICK COMPANY

TITLE