

TILLAMOOK COUNTY REWITNESS

#563

SEC. 35 T 35 R 9 W., WM.  
 Center 1/4 COR.

Book 1 Page 55  
4 12

HISTORICAL: April, 1904 - set a fir limb 4" diameter  
 from which a Ceder 12" Bears NAGW .03 chains  
 Crooked Fir 10" Bears SG 2<sup>o</sup> E 20 chains

CONDITION

FOUND: A nail in base of 36" Ceder for the  
 Corner Point (set by U.S.F.S. Personnel?)

Found a 18" fir scribed - 1/4 CS BT - and exposed

COMMENTS: 18" Fir is same tree as the Crooked 10" Fir.  
 (Year 1969) 36" Ceder is the same tree as the 12" Ceder.  
 (Year 1904)

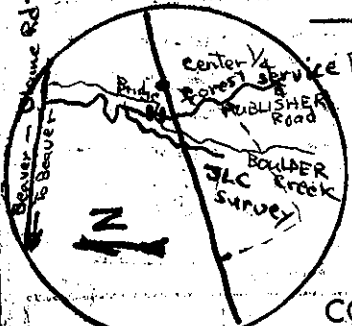
REWITNESS

SET 1" x 30" Iron Bar in base of 36" Ceder on southeast side of tree.  
 ± 80 feet

± 80 " Hat Section S. E.

NEW ACCESSORY:

			Scribed as follows
30" Fir	finish nail in face	N 59 E 18 31	C 1/4 S 35 BT CS
15" Fir	finish nail in face	S 10 E 29 28	C 1/4 S 35 BT CS



COMMENTS: The Corner is on a small bench ± 150 feet  
 East of U.S.F.S. Road. John Carllich did a survey  
 on the northerly side of the center 1/4 and ~~transit~~ transit  
 tied the property tract to the center 1/4.

IN THE PRESENCE OF: Al Duncan RS 793  
 George Urrey  
 Gale Arthur

DATE: 9-9-69

PHOTO#: 5/13/78

*[Signature]*  
 TITLE

County corner tag affixed.

Gwn