

Index File No.

CORNER RECORD (SEARCH)  
(Ref. FSM 7151.4)

Tract or Survey No.

Cor. No. **A-21**

T **3S** R. **9W**

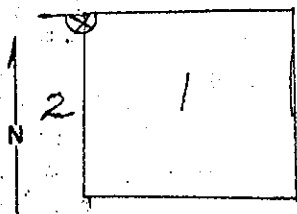
R.D. **Hebo** County **TILLAMOOK**

**#484**

Merid. **Will.**

N.F. **SILSLAW** State **OREGON**

CORNER DIAGRAM



DESCRIBE CORNER MONUMENT FOUND GLO 1860 SET POST AND MARKED:

A 6" HEM., S. 35° W., 11 LKS.  
A 10" FIR, S. 47° E., 14 LKS.

DESCRIBE BEARING TREES OR OTHER OFFICIAL ACCESSORIES FOUND

By Record M. WHITMORE, USFS, 6-14-55 He Found  
18" DEAD FIR, S. 47° E., 14 LKS. WITH VISIBLE SCRIBE  
MARKS.  
A 6" DEAD HEMLOCK, FALLEN, S. 35° W., 11 LKS. UNDER LARGE  
FALLEN CEDAR TREE. SHOWS OLD AXE MARKS BUT SCRIB  
ING ROTTED OFF.

PHOTO IDENTIFICATION DATA

Photo No. \_\_\_\_\_  
Filed At. \_\_\_\_\_  
Object Ident. \_\_\_\_\_  
Ident. By \_\_\_\_\_  
Signature \_\_\_\_\_

DESCRIBE CORNER LOCATION RELATIVE TO NEAR-BY FEATURES, ALSO HOW TO REACH CORNER

He MARKED 2 New BT's:  
24" FIR, S. 59° W., 27 FT. MKD. T3SR9WS2BT.  
18" HEM., S. 15° E., 21<sup>2</sup> FT. MKD. T3SR9WS1BT.

PLANE COORDINATE POSITION DATA

State \_\_\_\_\_ Zone \_\_\_\_\_  
X \_\_\_\_\_  
Y \_\_\_\_\_  
Estab. By \_\_\_\_\_  
Agency \_\_\_\_\_

IN PRESENCE OF MARTIN CHAFFEE AND RAY MCKNIGHT

Signature *Edward Whitmore*

Title *Forestry Tech* Division *Timber*

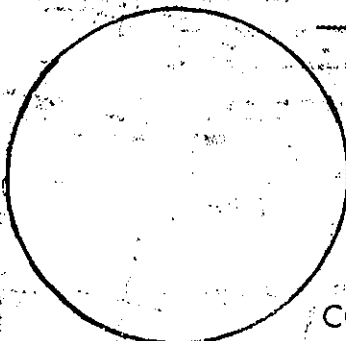
Headquarters *Hebo*

Date *1-31-69*

7100-52 (3/68)

REWITNESS

I SET



"x" "x" "Post" N. W. feet  
" Hat Section S. E.

NEW ACCESSORY:


COMMENTS: *backside of post is blank*

IN THE PRESENCE OF:

DATE:

PHOTO#:

- County corner tag affixed.

INT WOOD CORNER SMALL TAGS

TITLE