

TILLAMOOK COUNTY REWITNESS #273
 E/N.W. Corner ~~SE~~
~~SEC~~ ~~COR~~ Sec 2 T 1 S R 10 W., WM.
 DLC.#45

HISTORICAL: Book 4 - P. 56 - 1949 1/2" rod South Side old Rock

16" Spruce	N 85° W	30 ± ft
16" Hemlock	North	37 ± ft
A-1725	A-936	A-1518
A-256	A-331	

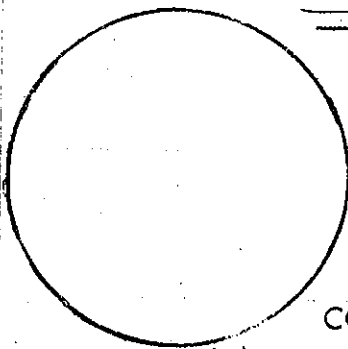
A of A & B

CONDITION	FOUND:		
STUMP	24" Hemlock	North 37°	Visible "BT S DLC CS"
	3" Iron Pipe		

COMMENTS:

REWITNESS

I SET



96" Hat Section East of corner @ 15 feet

NEW ACCESSORY:

scribed as follows:

* 20" Spruce	S 10° W	55 ± ft	"NW DLC 45 BT CS"
* 16" Spruce	N 60° E	17 ± ft	"NW DLC 45 BT CS"

COMMENTS: I remember finding 3" Iron pipe at this location in 1952. Who set it, I don't know. Paddleboards were set on new B.T.s' in 1/68

IN THE PRESENCE OF: Stan Skinner Cole Arthur
 Al Duncan J.L. Carllich

DATE: 5/65 & 1/68

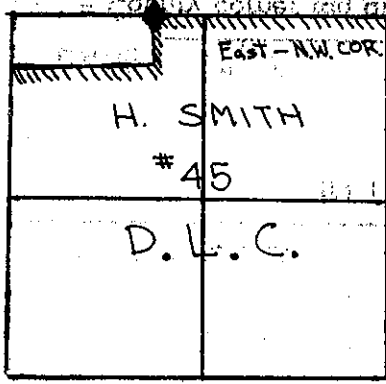
PHOTO#: 1965-88-40

J. Carllich C.S.

* - County corner tag affixed.

TITLE

GWA



TILLAMOOK COUNTY REWITNESS
 E.N.W. COR. SEC. 2 T 15 R 10 W., WM.
 DLC.#45

HISTORICAL: Book 4 Page 56 1949 set 1/2" I.R. Southside old rock

MAPS	MAPS
A-256	A-1725
A-331	
A-936	
A-1518	

B of A, B

CONDITION Good

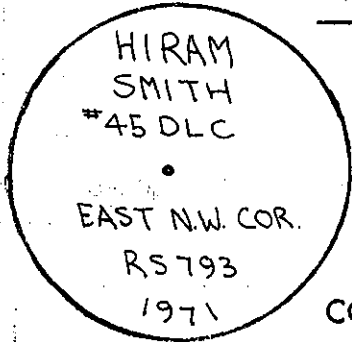
FOUND: 3" Iron Pipe with Plug and nail

Now 22" Spruce	20" Spruce S10°W	55 ⁰⁰ ft	Scribing visible
Now 18" Spruce	16" Spruce N60°E	17 ⁵⁰ ft	Scribing visible
Now 24" Hemlock ^{VERY BOTTOM} Stamp	16" Hemlock N0°E	37 ^E ft	Scribing still visible (1971) distance to face 37 ^E feet
	(Book 4 Page 56)		

COMMENTS: Refer to previous rewitNESS card.

REWITNESS

1 SET 2" Iron Pipe with Brass Cap in 8" Tile with Cement
 "x" "x" " Post N:W. feet
 96 " Hat Section S. E. 1 1/2



NEW ACCESSORY:

COMMENTS: I REPLACED 3" IRON PIPE WITH BRASS CAP.

IN THE PRESENCE OF: Gale Arthur
 Regar Knippel

DATE: Dec 1971

PHOTO#: REC

* = County corner tag affixed.

TITLE

GWA 71