

26 25
35 36

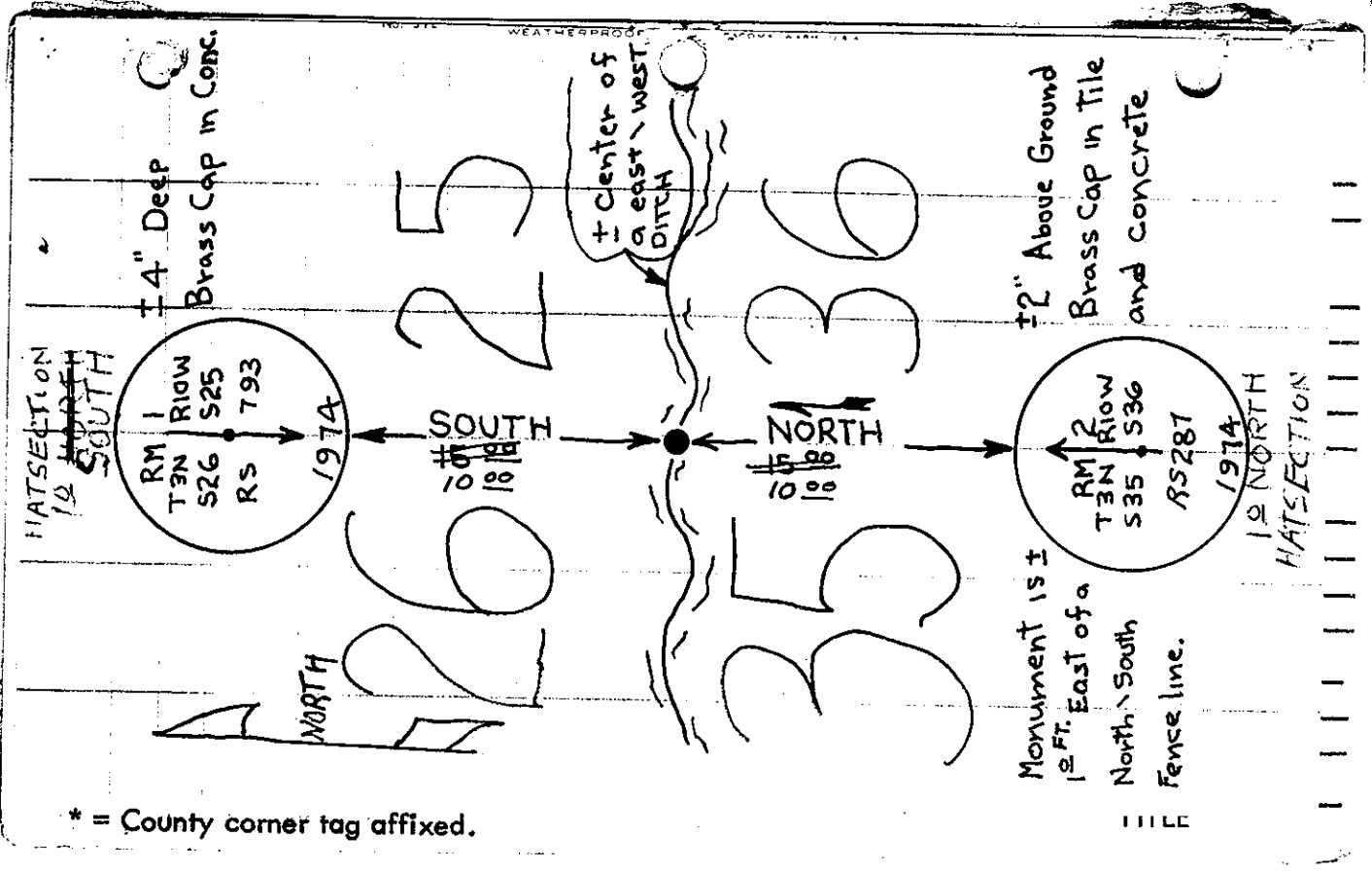
TILLAMOOK CO. REWITNESS #137
SEC. 26 25
SECTION COR. 35 36 T 3N R 10 W., WM.

HISTORICAL: GLO T3NR10W Pg 9

MAPS	MAPS	BOOK	PAGE
A-917 See field notes	A-208 A-606	P-1	144
A-813 See field notes	A-510 B-196	P-4	84 & 92
A-401 See field notes	A-2156 A-583	51	132
A-416 See field notes	A-1434 B-193	CT-1	8
B-190 A-518	A-1437 F-41-25	CT-6	102
FOUND: F-14-30	F-41-112 F-41-21		

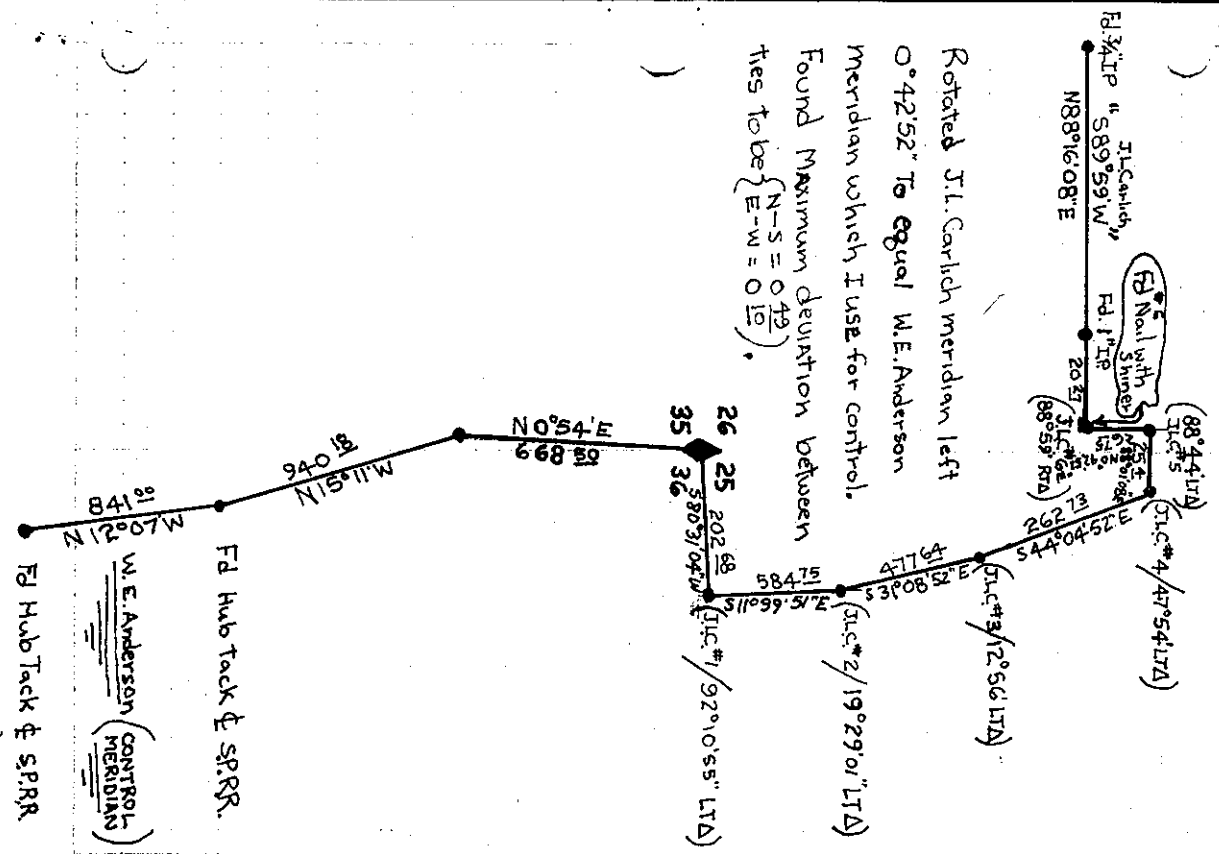
CONDITION

COMMENTS:



THIS CORNER WAS A ±1" IRON PIPE UNTIL
 ± SUMMER OF 1969 AT WHICH TIME STAN
 JUD HAD A EAST-WEST DITCHLINE DUG.
 STAN JUD REMEMBERS REMOVING THE PIPE.
 HE FAILED TO REPLACE THE SECTION
 CORNER BECAUSE HE FELT THAT HE COULD
 NOT REPLACE IT ACCURATELY.

USING FIELD TIES BY COUNTY
 SURVEYOR - W.E. ANDERSON AND COUNTY
 SURVEYOR - J.L. CARLICH, THE SECTION
 CORNER WAS RE-ESTABLISHED
 W.E.A. - SURVEY - C.S. MAP A-813 & field
 M. ELLSWORTH
 J.L.C. - SURVEY - C.S. MAP A-917 & field
 M. JOHNSTON N. LINE notes



Rotated J.L. Carllich meridian left
 0°42'52" to equal W.E. Anderson
 Meridian which I use for control.
 Found Maximum deviation between
 ties to be { N-S = 0.49
 E-W = 0.10 }.

W.E. Anderson (CONTROL MERIDIAN)
 F.I. Hub Tack & S.P.R.R.
 F.I. Hub Tack & S.P.R.R.

26 25	= APPROXIMATE POSITION BY C.Z. # 2 X 4 HUB	
35 36	of E-W DITCH & PROJECTION OF N-S FENCE	
	LINE LOCATED SOUTH OF SECTION CORNER	
118 95	119 28 @ 94°16' = 4°16' W 23690	N 157526
	4 252°26'0" - 4	S 81°58'58"E
	2 107°33.6'	
	m 107°33.8'	
C	726'12" LTA	S 9°32'46"E
D		
Found 1/2" Iron Pipe at ± position of 2x2 W.S. set by WEA (CS MAP A-401) Refer to field notes		
FD 1/2" Iron Pipe	N 1120 56	Possible POSITION OF THE NORTHWEST CORNER OF MAP A-401
	W 239 85	
485 08	E D.M. @ 90°07' 0°07'	
	4 184°09.0' + 2	S 13°41'40"E
	2 175°51.2'	
	m 175°51.1'	
C	4°08'54" LTA	S 9°32'46"E
D		

A = Found Hub tack & R&R Tracks - See field notes for Harold ELLSWORTH - C.S. MAP A-813 Section 36 T3NR10W

B = Found Hub Tack & R&R Tracks - See field notes for Harold ELLSWORTH - C.S. MAP A-813 Section

C = Spruce limb on north side of E-W Ditch ± 3 feet north of north edge of ditch - ± 2" below surface

D = (#) 6 of survey by St. Carlich - Map A-917 - See field notes - Section 26 T3NR10W - Roofing nail with shiner on fence projection - located in middle of west lane of pavement - ± 2" below existing Black Top

E = FD. 1/2" Iron Pipe ± 8" above ground and ± 15 feet west of end of existing fence in mass of black-berry vines - ± 4" west of old rotting stump Pipe is badly rusted

(wild guess)

E	G14 13	C.S. MAP A-917 (GIC) = "MERIDIAN S 88° 59' W"	
	4	262° 11.2' +2	S 88° 16' 08" W ✓
	2	97° 49.0'	
	m	97° 48.9'	
D		82° 11' 06" LTD	N 2787 45 W 555 ZZ
	1212 49	EDM	
	4	176° 59.1'	N 9° 32' 46" W ✓
	2	183° 00.9'	
	m	183° 00.9'	
C		3° 00' 54" RTA	N 1591 85 W 354 62
	1630 82	EDM	
	4	180° 28.00"	
	3	0° 01' 20"	N 12° 33' 40" W
	2	179° 34' 30"	
	1	6° 01' 10"	
B		M 179° 33' 20"	N 0° E 0°
"841 02"		0° 26' 40" LTD	
A		MY CONTROL MERIDIAN FOR THIS SURVEY	

MEAN MERIDIAN = "N 12° 00' 1" W"
SEE FIELD NOTES FOR
HANDLED ELLIPSOIDAL
SURVEY

