

INITIAL  
POINT  
ROCKAWAY  
BEACH

TILLAMOOK COUNTY REWITNESS

#23

Initial ~~NEW~~ COR. SEC. 5 T. IN R 10 W., WM.  
 Initial ~~SE~~ BEG. #

HISTORICAL: Refer to Previous  
 Work on attached Card

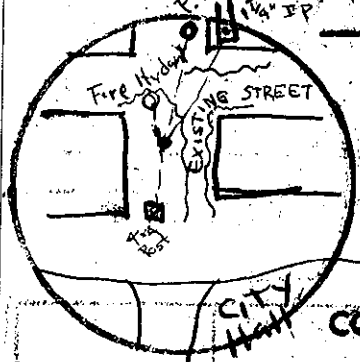
CONDITION

FOUND:

GOOD	FIRE HYDRANT TOP —	S82°W	10.00 ft
Good	1/4" IRON PIPE IN CONC WALL	N34°W	75.52 ft
Good	4x4x48" White Cedar Post	S82°E	10.90 ft
Good	(for corner) found a Concrete Monument with Bolt		

COMMENTS:

1 SET



ST. MARY'S CHURCH  
 REWITNESS

Post N.W. foot  
 Hat Section S. E.

NEW ACCESSORY:

Power Pole GA-A-168-L6 N78°W 11.94 ft  
 I Plug & Tack 1/4" Iron Pipe located in  
 Concrete Wall at ST. MARY'S CHURCH

COMMENTS:

IN THE PRESENCE OF:

DATE: 1969

PHOTO: REC

County corner tag affixed.

TILLAMOOK COUNTY REWITNESS

TITLE

G.W.H.

INITIAL POINT  
ROCKAWAY BEACH

TILLAMOOK COUNTY REWITNESS #23B

INITIAL COR. ~~SE~~ ~~SW~~ 5 T 1 N R 10 W., WM.

HISTORICAL: FOUND A CONCRETE MONUMENT WITH 4" IRON PIPE WITH SPIKE IN CENTER OF IRON PIPE. MONUMENT IS ± 12" BELOW SURFACE OF BLACKTOP.  
MAPS A-1137 A-1471 C-38  
A-1793 A-1315

CONDITION

FOUND:

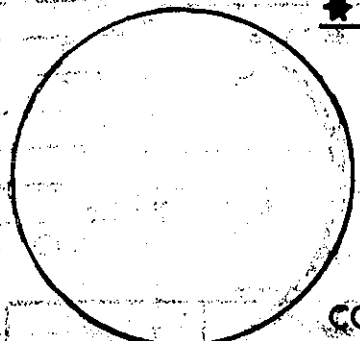
NO WITNESSES

COMMENTS:

REWITNESS

190

I SET



\* 4" x 4" x 48" Post ~~SE~~ EAST 10± feet  
"Hat Section" X E.

NEW ACCESSORY:

FIRE PLUG ON TOP OF VALVE	9 <sup>28</sup>
LIP IN SE COR. RETAINING	75 <sup>49</sup>
WALL FOR CATHOLICK CHURCH	

COMMENTS: This Corner Falls in Center Line of Street Running N & S at ± 25' S of E-W Centerline Street Running E-W

IN THE PRESENCE OF:

G Arthur  
S Skinner

DATE: 8-23-67

PHOTO#:

\* - County corner tag affixed.

TITLE GWA