

TILLAMOOK COUNTY SURVEYORS OFFICE  
COURTHOUSE, TILLAMOOK, OREGON 97141

"RIVER 1941"

SECTION 19, T.1S., R.9W., W.M.

RIVER  
1941



2001  
LS 793

I FOUND UNDERGROUND MARK 3 FEET BELOW SURFACE, INTACT. SURFACE MARK AND RM 1 AND RM 2 HAVE BEEN DESTROYED BY HIGHWAY CONSTRUCTION AND WERE NOT RECOVERED. RIVER RM 3 WAS RECOVERED INTACT. AZIMUTH MARK IS ALSO DESTROYED. BENCHMARK S 237 HAS ALSO BEEN DESTROYED.

I SET A 3" TILLAMOOK COUNTY SURVEYORS BRASS CAP, STAMPED AS SHOWN, IN A CONCRETE FILLED 12" DIAMETER PVC CYLINDER.

---

HISTORY OF FOUND MONUMENT

THIS MONUMENT IS A TRIANGULATION STATION ESTABLISHED BY NATIONAL GEODETIC SURVEY AS A SECOND ORDER STATION. NGS PID NUMBER RD0998.

---

LOCATION OF MONUMENT

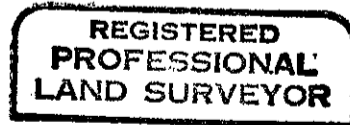
THIS POINT IS LOCATED ON THE EAST SIDE OF HIGHWAY 101, SOUTH OF THE BRIDGE OVER THE WILSON RIVER. APPROXIMATELY 8.6 FEET EAST FROM THE EAST CURB FACE; AND NORTH 2 1/2° WEST 56.0 FEET FROM THE GROUND WIRE BRACKET ON POWER POLE NUMBER 191702; AND SOUTH 3 1/2° EAST 159.6 FEET FROM THE GROUND WIRE BRACKET ON POWER POLE NUMBER 191801. BEARINGS DERIVED FROM COMPASS BEARING OF 'NORTH' AND HORIZONTAL DISTANCES OBTAINED BY LEICA TC1010.

---

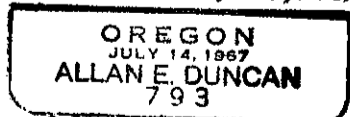
IN THE PRESENCE OF ALLAN E. DUNCAN, P.L.S. 793

APRIL 09, 2001

TITLE: TILLAMOOK COUNTY SURVEYOR



*Allan E. Duncan, C.S.*



RENEWAL 12-31-05