

TILLAMOOK COUNTY SURVEYORS OFFICE
201 LAUREL AVENUE
TILLAMOOK, OREGON 97141

1/4 CORNER SECTION 13 & 24, T.1N.,R.6W.,W.M.

S13
1/4 ---
S24
1949
199

I Found A 1 1/2" iron pipe with a 3" O.S.B.F. Bronze Cap. I encased the found I.P. in a 10" concrete cylinder .

History of found monument

This Corner was set by proportion in Tillamook County Surveyors Rewitness Book 2 at page 46. No attempt was made to verify its position.

(Book 2 Page 46) 40" fir stump S.30°E. 26.2'; (Found, now 52" fir stump with weather worn face and scribing visible, 24.15' to face).

(Book 2 Page 46) 38" fir snag N.30°E. 53.7'; (Found, now 40" snag 60' tall with weather worn face and scribing visible, 51.7' to face).

(Book 2 Page 46) 48" fir snag S.65°E 31'; (Found, now a 59" stump, no scribing, or face, old, faded, O.S.B.F. yellow metal location poster attached).

New Accessory

*9" Westerly stem of a double fir N.33°E. 9.87' scribed T1NR6WS13BTCS. The measurements were taken to a brass washer nailed to the face between the scribed "C" & "S".

*17" fir S.7°E. 17.06' scribed T1NR6W1/4S24CSBT. The measurements were taken to a brass washer nailed to the face between the scribed "B" & "T".

* indicates Tillamook County Surveyors yellow metal location poster attached.

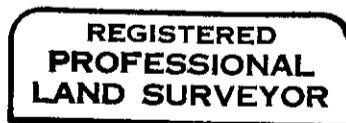
Location of Monument

This corner is located ±900' North of Saddle Mountain logging road, on a spur ridge top, course N.66°W X S66°E.

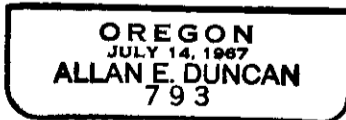
In the presence of Al Dvorak and Dan McNutt

November 6, 1993

Title:



Allan E. Duncan, C.S.



EXPIRES 12-31-93