

TOWNSHIP CORNER COMMON TO TOWNSHIPS 3 AND 4 NORTH, RANGES 10 AND 11 WEST, WILLAMETTE MERIDIAN.

HISTORY:

- Record No. 1 1873 - C. J. Handley, GLO Deputy Surveyor; Established, set post for corner from which: A 6" Spruce bears N80°E, 23 lks.; A 48" Spruce bears S25°E, 79 lks.; A 60" Spruce bears S80°W, 25 lks.; A 48" Spruce bears N20°W, 40 lks.; Ocean beach 3 chains West.
- Record No. 2 April 11, 1892 - M. Buchanan, GLO Deputy Surveyor; "Still finding no trace of line or corner post, I set a Post 4-1/2 ft. long, 4 ins. square, 24 ins. in ground for Cor. to Tps. 3 & 4 N R's 10 & 11 W."; From which: A 24" Spruce bears N58-1/2°E, 34 lks., marked T4NR10WS31BT.; A 36" Spruce bears S76°E, 73 lks., marked T3NR10WS6BT.; A 48" Spruce bears S87°W, 52 lks., marked T3NR11WS1BT.; A 40" Spruce bears N76°W, 10 lks., marked T4NR11WS36BT.
- Record No. 3 August 30, 1892 - Albert C. O Neel, GLO Special Inspector of Surveys; "I Begin at the corner to Townships 3 and 4 North Ranges 10 and 11 West, which is a post 4 ins. square 3-1/2 ft. above ground"; From which: A 40" Spruce bears N71°W, 5 lks., marked T4NR11WS36BT; A 48" Spruce bears S88°W, 50 lks., marked T3NR11WS1BT; A 30" Spruce bears N59-1/2°E, 32 lks., marked T4NR10WS31BT; A 36" Spruce bears S63°E, 69 lks., marked T3NR10WS6BT.
- Record No. 4 May, 1927 - William C. Elliott, Civil Engineer, states in the Surveyors Affidavit of COVE BEACH; "Said initial point is situated 700.00 feet east of the southwest corner of Section 31, Township 4 north, Range 10 West of the Willamette Meridian." (Town Plat Book 9, page 8, Clatsop County Survey Records.)
- Record No. 5 March 30, 1939 - R. Forrest, A. York and N. Hoard, Oregon State Highway Department Survey Crew; "Hub and Tack Section Corner. B.T. Descriptions from Section Corner." A 3 ft. Spruce stump bears N53°W, 6.3 ft., marked "BT-R-N"; A 4 ft. Spruce tree bears N6°30'W, 55.0 ft., marked "T4NR11WS36BT"; A 2 ft. Spruce stump bears N49°30'E, 20.3 ft., marked "T4NR10WS31"; A 2 ft. Spruce stump bears S54°E, 67.0 ft., marked "T3NR10WS6"; A 3 ft. Spruce stump bears S1°W, 84.0 ft., marked "BT". (Bearing Tree Book page 139, Clatsop County Survey Records.)
- Record No. 6 October 19, 1946 - Tim de Jong, Oregon Engineer No. 1698; "at the request of Wm Kruschke, Arch Cape, who was bulldozing a road to the beach and anticipated the removal of existing bearing trees, I set a 1-1/2" boiler flu in accordance to notes presented to me by the highway dept. I found a 3' spruce stump showing old blaze and the only scribing legible being '36' bears N76W 6.3 feet dist. A 4' spruce tree marked 'T4NR11WS36' bears N7°W at 55.0 feet dist. The blaze seems about 10 years old tree in healthy condition. A 3' stump bears S54°E a dist of 68 feet marked 'T3NR10WS6BT' apt to be removed. A 3' spruce stump in a small canyon about 30 feet east of creek bears S0°15E 84.0 feet dist. only 'B.T' marks legible. The NE witness has been removed. The N.E corner of Wm Kruschke's house bears S38°W a distance of 153.8 feet dist. Set a 1-1/2" I.P. 4' long flush with ground and a 4" S4S fir post 1 foot North fully marked.



There being no surveyors scribe available I could not place iron marks. An old 2' spruce snag bears S76-1/2W a slope dist on a 15° Vert angle of 95.2 feet this snag may have been a B.T. to this M.C. it is located 10' N of creek along a foot bridge to Kruschke's. No other trees available for possible B.T.'s to M.C." (Bearing Tree Book page 140, Clatsop County Survey Records.)

Record No. 7 April 21, 1952 - W.A. Markham, Oregon Engineer No. 1842; FALCON HEIGHTS subdivision "Initial Point of said survey is an iron pipe 2" X 3' placed in concrete and located at the corner common to Twps. 3 & 4 North, Ranges 10 & 11 West, W.M." (County Survey No. C-161, Tillamook County Survey Records.)

Record No. 8 March 12, 1973 - Robert A. Hovden, Oregon Land Surveyor No. 954; "At Township corner to Secs. 1-6-31-36 T3-4NR10-11W W.M. Set 2-1/2" i.p. and brass cap. New B.T.: PP&L Power pole N44°E 39.5 Yellow tag." (Bearing Tree Book page 714-6, Clatsop County Survey Records.) "36-31-1-6 Reset from Lot Cor 30' S & 5'W." (County Survey No. B-5193, Clatsop County Survey Records.)

Record No. 9 December 22, 1981 - John E. Hollingsworth, Oregon Land Surveyor No. 691; "STATE PARKS CREW FOUND: A bronze disc on a 2-1/2" iron pipe just off the west end of Columbia Street, approximately on the center line." (County Survey No. B-7491, Clatsop County Survey Records.)

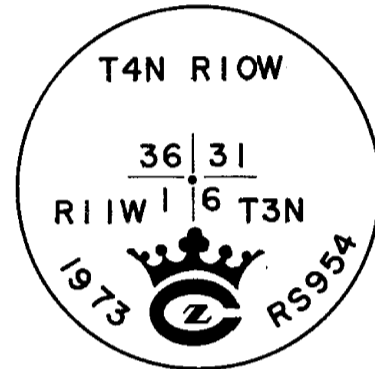
Record No. 10 December 20, 1990 - Allan E. Duncan, Tillamook County Surveyor; "I found a 2-1/2" iron pipe with a 3-1/4" Crown Zellerbach Brass Cap in a small amount of concrete. I added more concrete to the found monument and referenced to found objects as shown below. History of found Monument: This monument is the monument reset by Robert A. Hovden RS 954 on Clatsop County Surveyors map #B-5193 from the NE corner of lot 1 block 1 Falcon Heights subdivision. I found a 1" iron pipe at the NW corner of lot 4 block 4 Falcon Heights approximately 2" deep in pavement, leans slightly to the South, S.56°14'34"E. 53.82'; (Computed record for this point, from Falcon Heights subdivision by Wilbur Markham RE 1842 Tillamook County Surveyors map #C-161, is S.55°58'06"E. 54.08'). I affixed a Tillamook County Surveyors brass washer to position tied. I found a 1/2" iron pipe at NE corner of lot 1 block 1 Falcon Heights, approximately 1' deep, S.9°48'14"W. 30.41'; (field and record value are identical). I encased in an irregular mass of concrete and used for basis of bearings. PP&L Power pole N44°E. 39.5' set by Robert A. Hovden LS954 Mar. 12, 1973 Clatsop County Rewitness BT-714-6; (Now N.42°27'32"E. 39.5'. The distance was measured to the side center of the pole. The angle was turned between the 'R' and the 'E' in the word 'TREE' on the bearing tree tag. The distance on the tag is marked 34.5', should be 39.5'. The pole is now a P.U.D. pole #310000). New Accessory: \*72" hat section post S.81°E. 11.55'. \*Indicate yellow Tillamook County corner tag affixed. Surveys of Reference: See miscellaneous section file S15 T3NR10W for a copy of the rewitness furnished by Clatsop County Surveyors Office. ... Monument Location This corner is located on the North side of a gravel beach access, approximately 12' West of the end of truck travel. In the presence of Dan McNutt & Al Dvorak." (Rewitness Bin, Book 7, page 49, Tillamook County Survey Records. ALSO Bearing Tree Book page 1282, Clatsop County Survey Records.)

**EVIDENCE - MONUMENTATION:**

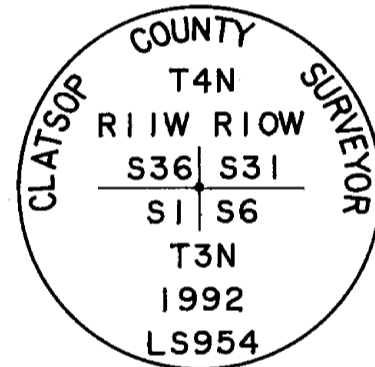
In reviewing the history on this corner, a break in the chain of evidence exists. Apparently sometime between 1946 and 1973, this corner was obliterated by road construction. It is unclear when W.A. Markham surveyed FALCON HEIGHTS subdivision in 1952, if original evidence still existed, but he stated that the initial point is a 2" X 3' iron pipe placed in concrete at the corner common to Townships 3 & 4 North, Ranges 10 & 11 West, W.M. This monument did not exist in 1973 and I reset this corner from a lot corner 30 feet South and 5 feet West (See Record No. 8).

From the corner I reset in 1973, we tied to various corners in the COVE BEACH and FALCON HEIGHTS subdivisions, in an attempt to prove or disprove this corner location. We could not find significant discrepancies to dispute its location, therefore I adopt the monument that I set in 1973 as the true Township Corner.

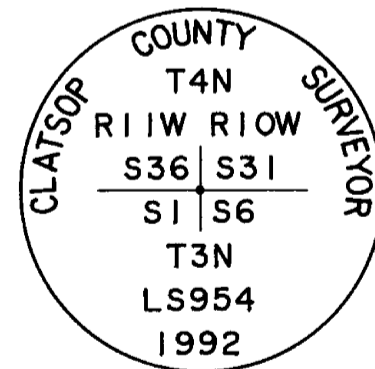
On April 23, 1992, we found the brass capped monument I set in 1973 (See Record No. 8). The monument is a 2" X 33-3/4" galvanized iron pipe, with a coupling on top and a 3" brass cap stamped:



Top set in a 2' diameter concrete pad flush with the ground surface. We pulled said monument and in its place we set a 1-1/2" X 30" galvanized iron pipe with a 2" brass cap stamped:



Top 38" below the ground surface for a subsurface monument. We placed 8" of dirt over the cap. Over this we placed a 2" X 30" aluminum Berntsen A-1 standard monument, with a 3-1/4" aluminum cap stamped:



Top flush with the ground surface, top 12" of pipe encased in about 2 cubic feet of concrete.

**FROM WHICH:**

Set a 6 foot white Carsonite witness post 2 feet North.

The original bearing trees, together with the witnesses mentioned by the Oregon State Highway Department survey crew (See Record No. 5) and by Tim de Jong (See Record No. 6), are all missing, except as follows: Oregon State Highway Department's 3' Spruce stump S01°W, 84.0 ft. (de Jong = S00°15'E, 84.0'); now root collars in place with possible uprooted stump lying Westerly, no marks found.

Found Robert A. Hovden's 1973 witness (See Record No. 8) as follows: The PP&L Power pole N44°E, 39.5'; now a Pacific Power and Light power pole No. 310000 bears N42°13'35"E, a distance of 38.74 feet to a 3/4" brass disc stamped "LS 954" nailed 1' above the ground surface with a 5" X 7" yellow metal location poster found nailed at breast height.

Found Allan E. Duncan's 1990 witnesses (See Record No. 10) as follows:

The NW corner Lot 4, Block 4, of FALCON HEIGHTS, a 1" iron pipe S56°14'34"E, 53.82'; now a 3/4" brass disc stamped "SURVEY" in a 1-1/4" I.D. iron pipe bears S56°25'31"E, a distance of 53.83 feet (Computed from FALCON HEIGHTS Plat = S55°58'06"E, 54.08'), said pipe lies 2" below the paved surface of Tide Avenue.

The NE corner Lot 1, Block 1, of FALCON HEIGHTS, a 1/2" iron pipe S9°48'14"W, 30.41'; now a 1/2" iron pipe, bears S09°42'31"W, a distance of 30.52 feet (Computed from FALCON HEIGHTS Plat = S09°48'14"W, 30.41'), top 6" below the ground surface.

The 72" hat section post S81°E, 11.55'; now a metal reflector post, 4.5' high, bears S81°53'E, a distance of 11.5 feet with a Tillamook County yellow metal location poster riveted to the face.

Found additional monuments which we used as references:

A 5/8" iron bolt, top 6" up, set by William Ellison for the Southeast corner of Lot 1, Block 33, of COVE BEACH (See County Survey No. AA-4053), bears N08°26'07"W, a distance of 31.09 feet (Computed from COVE BEACH Plat = N09°27'44"W, 30.41').

A 5/8" iron rebar with yellow plastic cap, writing illegible, set by Colin Handforth for the Southwest corner of Lot 1, Block 32, of COVE BEACH (See County Survey No. AA-7884), bears N27°38'17"E, a distance of 33.83 feet (Computed from COVE BEACH Plat = N26°33'54"E, 33.54'. ALSO Computed from CS No. AA-7884 = N27°37'41"E, 33.85'). The yellow plastic cap is destroyed, and the rebar is extending 1" above the surface of Tide Avenue.

A 1-1/2" iron pipe, top 2" down, apparent Northeast corner of FALCON HEIGHTS subdivision, bears N89°55'59"E, a distance of 583.77 feet (FALCON HEIGHTS Plat = S89°39'30"E, 584.5').

A 3" brass cap stamped CB-57 1968, set in concrete, bears S83°12'04"E, a distance of 154.47 feet. Said brass cap monument is a Horizontal control station set by ODOT and lies on the south edge of a ditch on the South side of Columbia Street. The monument and surrounding concrete is exposed and appears to have been disturbed as the top is leaning, and the surrounding soil has eroded away from the majority of the concrete pad.

A Pacific Power and Light power pole No. 369002, bears N00°50'49"W, a distance of 31.48 feet to a 3/4" brass disc stamped "LS954" nailed 2.0 feet above the ground surface.

Nailed 4" X 7" yellow aluminum "BEARING TREE" signs on the Pacific Power and Light poles.

Witnesses and references tied on April 23, 1992.

Bearings based on solar observation taken January 21, 1992 at Latitude 45°47'00" North, Longitude 123°58'01.5" West.

Present: Steven D. Thornton, PLS 2014, County Survey Technician.  
Jerry W. Carter, County Survey Technician.

County Surveyor Field Book 37, page 25, Clatsop County Survey Records.

Surveyed for Clatsop County  
by: Robert A. Hovden, PLS 954  
Clatsop County Surveyor  
1100 Olney Avenue  
Astoria, Oregon, 97103

