

TILLAMOOK COUNTY SURVEYORS OFFICE
TILLAMOOK COUNTY COURT HOUSE
201 LAUREL AVENUE
TILLAMOOK, OREGON 97141

1/4 CORNER COMMON SECTIONS 10 & 15 T.3S., R.10W., W.M.

1 S10 I found a 2" iron pipe with a 3" U.S.D.A. Aluminum
/ ----+---- Cap (see T.C.S. Map #B-833). I encased the found
4 S15 iron pipe in a 10" concrete cylinder.
1979
PLS 896

History of found monument

I found this monument to be as described on T.C.S. Map #B-833 and in T.C.S. Rewitness Card #604 and the references found and/or set at that time to now be as follows:

Original 30" hemlock S.10 E. 15 lks., reported on rewitness card #607 as a 36" hem. snag with cruiser mark, and on rewitness card #604 as same with scribe mark showing, and on Map B-833 as a 15' high stump S.10 E. 10', and on map B-1085 as a 25" snag S.10 E. 9.9'; (Found, now fallen over and just a pile of rot remains).

Original 16" hemlock N.8 W. 12 lks., reported on rewitness card #607 as remains of old stump, and on Map B-833 as a small portion of rot remains, and on map B-1085 as remnants; (Now Gone).

*(Rewitness Card #604) 10" Fir S.4 W. 6.2' to nail head at scribed "B", and T.C.S. B-833 reported a 12" D. Fir S.4 W. 6.7' with healed blaze, and T.C.S. B-1085 reported a 13" D. Fir S.4 W. 6.7'; (Found, now a 13" D. Fir 6.7' to center, fire scared, face overgrown).

*(Rewitness Card #604) 12" Fir N.89 W. 9' to nail head at scribed "B", and T.C.S. B-833 reported a 14" D. fir N.89 W. 9.6' with healed blaze, and T.C.S. B-1085 reported a 16" D. fir N.89 W. 9.6'; (Found, now a 16" D. fir fire scared, 9.6' to center of tree). face overgrown).

Also found a steel fence post approximately 3' East.

New Accessory

*72" light hat section post North 1.5'.

*indicates Tillamook County Surveyors yellow metal location poster attached.

Surveys and Rewitnesses of record

B-1085	12-24-82	Edgar R. Cook	LS 1073
		& David K. Bateman	LS 1068
B-833	4-13-79	L. D. Bishop	LS 896
Rewitness Bin Card #604	1-15-72	Leonard Whitmore	U.S.F.S
Rewitness Bin Card #607	6-14-54	Mervin Whitmore	U.S.F.S
field notebook P-6 page 79 & 80	8-11-28	W.E. Anderson	
G.L.O. Book 3S10 Page 31	8-15-1882	Wm. P. Wright	
		contract #442	

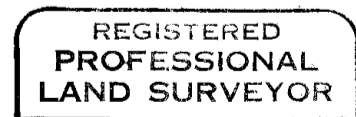
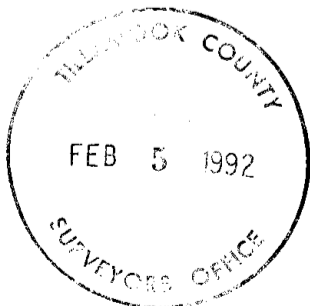
Location of Monument

This corner is located approximately 70' North of a small creek, course SW, on the West side of a recent clearcut and slash burnt area.

In the presence of Al Dvorak and Dan McNutt

January 6, 1992

Title



Allan E. Duncan, C.S.

