

TILLAMOOK COUNTY SURVEYORS OFFICE
COURTHOUSE, TILLAMOOK, OREGON 97141

N 1/16 CORNER COMMON SECTIONS 18 & 17 T.1S..R.8W..W.M.

1/16
|
S18 + S17
|
RS 793
1970

I found a 1 1/2" iron bar with a 3" Tillamook County Brass Cap (see T.C.S. Rewitness #174), in the apparent centerline of Oregon State Highway #6, (A.K.A. Wilson River Highway). I set an 8" cast iron monument case around the found monument and encased in concrete.

History of found monument

I found this monument to be as described in said T.C.S. Rewitness and the references found and/or set at that time to now be as follows:

25" fir S.21 1/2 W. 63.1' YMLP; (Found, now 29" fir with healed face and rusty yellow metal location poster attached).

24" hemlock S.7 E. 69.3'; (Found, now a 32" hemlock with healed over face).

Surveys and Rewitnesses of record

| | | | |
|-----------------------|------------------------|-------------------|---------|
| B-530 | Sept. 1960 - Jan. 1967 | Richard A. Morris | RS 401 |
| A-2722 | June 1972 | C.O. Fredrickson | PE 4055 |
| A-2022 | Sept. 1970 | John L. Carlich | RS 287 |
| T.C.S. Rewitness #174 | 10-5-70 | Allan E. Duncan | LS 793 |
| | | John L. Carlich | RS 287 |

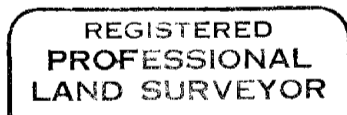
Location of Monument

This corner is located in the apparent centerline of Oregon State Highway #6, (A.K.A. Wilson River Highway), near milepost 8.

In the presence of Al Dvorak and Dan McNutt

May 14, 1991

Title:



Allan E. Duncan, C.S.

