

TILLAMOOK COUNTY SURVEYORS OFFICE

Initial Point Hebo Riverside
In Section 13 T.4S.,R.10W.,W.M



I set a 3" Tillamook County Surveyors brass cap on a 1/2" iron rod inside of the found original 2" iron pipe with 5/8" iron rod and yellow plastic cap inscribed gaylord LS 929, which I encased in concrete and mound of stone.

History of Found Monument

This is the original 2" iron pipe Monument set for this subdivision on Tillamook County Surveyors map #C-422.

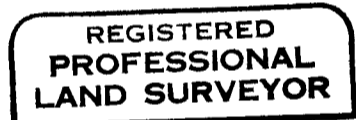
Location of Monument

This monument is located approximately 4' East of the top of the East bank of Three Rivers in a pile of rocks.

In the presence of Dan McNutt & Al Dvorak

August 1989

Title -----



Allan E. Duncan, C.S.

