

RESTORED CORNER FOR STATE OF OREGON - DEPARTMENT OF FORESTRY

Center South One-Sixteenth corner for Section 8, T1S, R8W, W.M.,  
Tillamook County, Oregon.

ORIGINAL by Richard A. Morris, LS401, June 27, 1962, (See  
Plat# A-1009, Tillamook Co. Records).

1 1/2"x36" galvanized iron pipe with 3" bronze cap, in mound  
of rock; missing, torn out by road construction, and from  
which a:

- 5" Spruce bears S31 1/2°E 20.9 ft.; now 18", exposed  
portions of scribes.
- 17" Alder bears S34 1/2°W 11.5 ft.; missing, torn out by  
road construction.

RESTORED

Var. 21 1/2°E

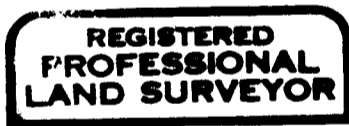
At the above decribed corner position I set a 1 1/2" x 30"  
aluminum pipe with 3 3/4" aluminum cap, 29" in ground, in  
East edge of road marked "C---C S1/16 1987 LS1998", and  
from which a:

- 19" Alder bears S87°W 61.0 ft. to bark scribes CS1/16S8BT.
- 34" Alder bears N21°E 37.1 ft. to bark scribes CS1/16S8BT.

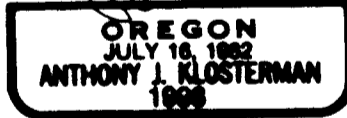
4"x4"x60" white painted Cedar post N86°E 2.5 ft. of corner pipe.  
Metal location poster on new BTs.  
Centerline of road bears West 8.0 ft.; S20°E by same.

Dated May 6, 1987.

Restored by



*Anthony J. Klosterman*



Present and witnessed by David B. Buchholz