

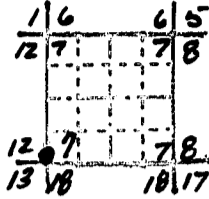
OREGON CORNER RESTORATION FORM

Section 12 Township 6S Range 9W

County Tillamook & Polk Date 2-27-86

Corner Designation

CLOSING CORNER 12/7
13/7



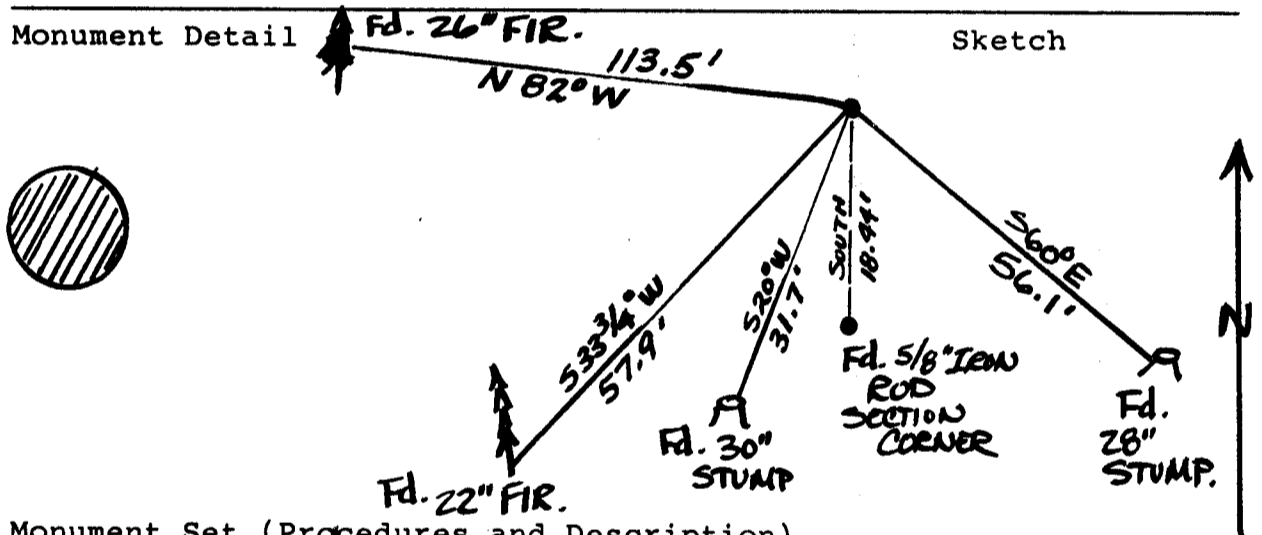
- Condition Report Only
- Not Found
- Renewed
- Unrecorded
- Surveyed In
- Referenced Out

Previous Renewals/Surveys, etc. Set Fenton 1887, Maloney 1889, Hollingsworth (State Parks) 1967.

Monument(s) & Accessories Found: (Condition and Source)

- Fd: 5/8" iron rod 4" x 4" white post (rotted).
- Fd: 28" stump, S 60°E-56.1' "1RBT" visible.
- Fd: 5/8" iron rod, south, 18.44', (section corner 7/18).
- Fd: 30" fir stump, S 20°W-31.7', "BT" visible.
- Fd: 10" fir (now 22"), S 33°45'W-57.9', overgrown blaze and yellow tag
- Fd: 14" fir (now 26"), N 82°W-113.5', overgrown blaze.
- Fd: red steel fence post 2' north.

Monument Detail



Monument Set (Procedures and Description)
None

New Accessories

- Set: State Parks bearing tree tag on 26" fir BT.
- Set: Orange carsonite post stenciled, "CC Sec. 12-13" 2' south.

Location & Comments

Van Duzer Corridor Compass Declination 20 1/2° E
 Bearings and distances Firm/Agency Oregon State
by hand compass and steel tape. Parks and Recreation Division
Address 525 Trade St. SE
Salem, OR 97310
Party Chief Kevin A. Thiel
Notes Kevin A. Thiel
Witness A. Slack
B. Bittner
H. Hanson

Surveyor's Seal

REGISTERED
PROFESSIONAL
LAND SURVEYOR

John E. Hollingsworth

OREGON
JULY 9, 1965
JOHN E. HOLLINGSWORTH
691

16