

County Surveyor's Record, Tillamook County, Oregon

CHAINS

RESTORED CORNER FOR STATE OF OREGON--DEPARTMENT OF FORESTRY

East one-sixteenth corner common to Sections 30 and 31, T3N, R9W, W.M., Tillamook County, Oregon.

ORIGINAL by A.M. Austin, County Surveyor, January, 1902:
Hemlock stake, missing, from which a:

60" Cedar bears S32°W 24 lks.; now 60" stump, in place, no scribes visible.

38" Hemlock bears N08°E 31 lks.; now 40" stump, tilted down-hill, no scribes visible.

NOTE: Found small face with scribe, backcast and axework on 36" Hemlock stump bears S27°W 14.4 ft.

RESTORED

Var. 21½°E

Set 1½" X 30" aluminum pipe with 3½" aluminum cap marked "OREGON STATE BOARD OF FORESTRY E1/16 S30 S31 1986 LS 1998", 28 inches in ground, with magnet under cap and from which a:

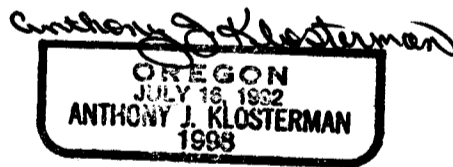
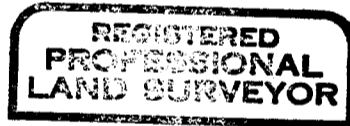
(Original) 60" Cedar stump bears S32°W 16.2 ft. to face; scribed E1/16S31BT.

19" Hemlock bears N05½°E 47.8 ft. to face; scribed E1/16S30BT.

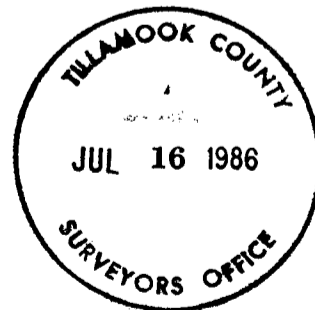
Set 4"X4"X60" white painted Cedar post 1.4 ft. N79°W of corner pipe. Oregon State Forestry Department metal location posters on new BTs.

Dated May 27, 1986

Restored by David B. Buchholz under my direction.
David B. Buchholz, Survey Crew Chief



Present and witnessed by Clifford R. Foster



BOOK 6 285