

County Surveyor's Record, Tillamook County, Oregon

CHAINS

RESTORED CORNER FOR STATE OF OREGON--DEPARTMENT OF FORESTRY

Section corner common to Sections 3, 4, 9, 10, T3N, R7W, W.M., Tillamook County, Oregon.

ORIGINAL by Henry Meldrum, September 11, 1893:

Post (found portion of squared post, out of place, badly rotted, and portions of scribes visible) from which a:

30" Fir bears N37⁰E 53 lks.; now 38" stump, 3 feet high, face closed.

48" Fir bears S21⁰E 22 lks.; now 50" stump, 4 feet high, blaze and portions of scribes visible.

18" Hemlock bears S27⁰W 32 lks.; now 20" hollow stump, 4 feet high, blazes and portions of scribes visible.

9" Hemlock bears N50⁰W 41 lks.; missing.

Line blazes found North, South, East and West.

NOTE: Horizontal distances fit very well when measured from the approximate center of the BT's.

RESTORED

VAR. 21½⁰E

Set 1½" X 36" galvanized iron pipe with 3" bronze cap marked "OREGON STATE BOARD OF FORESTRY T3N R7W S4 S3 S9 S10 1984 RS 1998", 34 inches in ground, and from which a:

15" Noble Fir bears N30⁰E 46.6 ft. to face; scribed T3NR7WS3BT.

13" Noble Fir bears S11½⁰E 21.9 ft. to face; scribed T3NR7WS10BT.

18" Noble Fir bears N70 3/4⁰W 23.2 ft. to face; scribed T3NR7WS4BT.

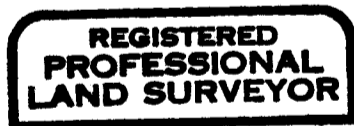
No suitable tree available within limits for SW quadrant.

Set 4" X 4" X 72" white painted Cedar post N82⁰W 2.7 ft. from corner pipe.

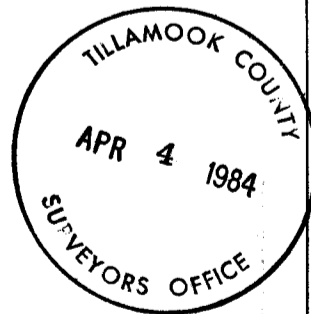
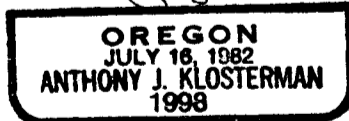
Oregon State Forestry Department metal location poster on 13" Noble Fir BT.

Dated April 5, 1984

Restored by:



Anthony J. Klosterman



Present and witnessed by David B. Buchholz