

County Surveyor's Record, Tillamook County, Oregon

CHAINS

RESTORED CORNER FOR STATE OF OREGON--DEPARTMENT OF FORESTRY

Section corner common to Sections 26, 27, 34, and 35, T1N, R10W, W.M., Tillamook County, Oregon.

ORIGINAL

Post missing from which a:

- 20" Hemlock bears S25°E 52 lks.; now missing, point falls in creek 3 ft. wide.
- 104" Spruce bears N10°E 84 lks.; now 70" badly rotted stub, 6 ft. high, no face visible.
- 38" Spruce bears N80°W 58 lks.; now 60" badly rotted stub, 7 ft. high, no face visible.
- 96" Spruce bears S27°W 16 lks.; now 50" badly rotted stub, 7 ft. high, scribes R10WT1NS34 visible.
- Branch 5 lks. wide, course West, bears South 1.5 chains; found 3 ft. creek course S80°W from S84°E, 30.0 ft.

NOTE: Horizontal distances fit very well when measured from the approximate face of BT's.

RESTORATION by R. R. Hays, County Surveyor, February 24, 1896. (Recorded in Book 10, Page 133, Tillamook County Surveyor's Office.) Spruce limb, now missing.

RESTORED

VAR. 21½°E

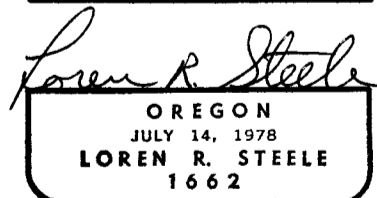
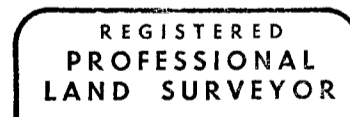
Set 1½" x 36" galvanized iron pipe with 3" bronze cap marked "OREGON STATE BOARD OF FORESTRY T1NR10WS27 S26 S34 S35 1982 RS 1662", 34 inches in ground, and from which a:

- 41" Spruce bears S76°E 31.1 ft. to face; scribed T1NR10WS35BT.
- 16" Spruce bears S79°W 8.1 ft. to face; scribed T1NR10WS34BT.
- 31" Spruce in clump of two bears N70°W 31.0 ft. to face; scribed T1NR10WS27BT.
- No suitable tree within limits for NE quadrant.
- Creek, 3.0 ft. wide, bears South 30.0 ft., course S80°W from S84°E.

Set 4" x 4" x 60" white painted Cedar post SE 1.5 ft. from corner pipe. Oregon State Forestry Department metal location poster on 25" Spruce bears N19°W 29.2 ft.

Dated February 19, 1982

Restored by David B. Buchholz under my direction.
David B. Buchholz, Transitman



Present and witnessed by Danny J. Benson