

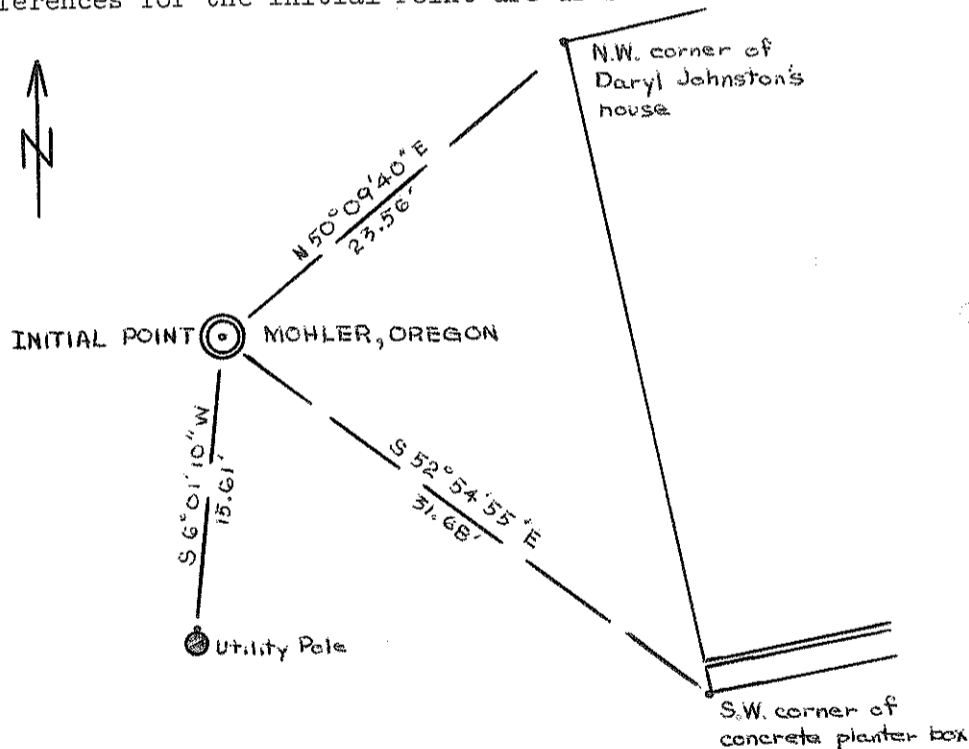
County Surveyor's Record, Tillamook County, Oregon

CHAINS

Reestablishment of the Initial Point of the Townsite of Mohler, Tillamook County, Oregon Section 35, T3N, T10W, W.M.

I begin at the $\frac{1}{4}$ corner common to Section 35 and Section 36, T3N, R10W, and proceed North along the section line (in accordance with the plat of the Townsite of Mohler dated June 9, 1911) a distance of 1375 feet to the called for position of the Initial Point. Being unable to find the galvanized iron pipe 2 inches in diameter, which was set as the Initial Point, I then proceed West (in accordance with the plat titled "Mohler, Oregon," by W. E. Anderson, County Surveyor; Tillamook County Deed Records, Book 223, Page 944) a distance of 810 feet. I search for and find the $\frac{3}{4}$ " iron pipe set by W. E. Anderson for the S.E. corner of Block 6, Mohler, Oregon. I find this pipe to be 1397.61 feet north, and 797.93 feet west of the above mentioned $\frac{1}{4}$ corner. To verify the $\frac{3}{4}$ " iron pipes position I run North a distance of 382.81 feet and also find the 1" iron pipe set by W. E. Anderson for the N.E. corner of Block 3, Mohler.

Based upon these two pipes set by W. E. Anderson and supplemental information as shown on my survey plat titled "Townsite of Mohler" dated June 1971-Tillamook County Surveyor's Records, I proceed southerly in line with the two pipes a distance of 30.00 feet and then I proceed easterly and perpendicular with the two pipes a distance of 810.00 feet and I set a $\frac{3}{4}$ " iron pipe with 3" brass cap for the Initial Point of Mohler. The references for the Initial Point are as shown below.



By: Charles G. Collard
Registered Oregon Land Surveyor

August 25, 1971

REGISTERED
OREGON
LAND SURVEYOR

Charles G. Collard

MAY 4, 1956
CHARLES G. COLLARD
376

BOOK 5

REFER TO MAP
CS "A-2156"