

March 18, 1971

Engineering Associates, Inc.
1913 North Highway 101
Lincoln City, Oregon 97367

Tillamook County Surveyor
Tillamook County Courthouse
Tillamook, Oregon 97141

Dear Mr. Carlich,

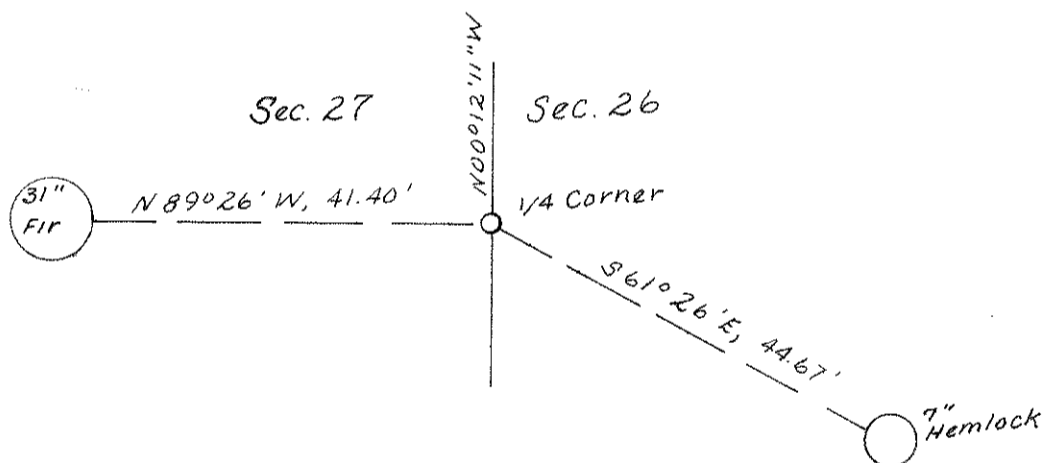
At the request of the Publishers Paper Company the undersigned has monumented the one-quarter corner corner between Sections 26 and 27, Township 4 South, Range 10 West of the Willamette Meridian, Tillamook County, Oregon.

Both the Southwest and the Northwest corners of Section 26, T. 4 S., R. 10 W., W. M. were found and the bearing between them was calculated to be North $00^{\circ}12'11''$ West, the distance was 5272.47 feet. A 5/8 inch iron rod was set on line between these two corners.

Bearing trees were selected and scribed as follows:

A 31-inch Fir, bearing North $89^{\circ}26'$ West, 41.40 feet, scribed, "BT E 1/4 S 27".

A 7-inch Hemlock, bearing South $61^{\circ}26'$ East, 44.67 feet, scribed, "BT W 1/4 S 26".



The monument was set on March 18, 1971, and was witnessed by--

Harold L. Van Valin
Steven G. Fultz

Very truly yours,

Lester E. Fultz
Lester E. Fultz, P.E.

CC:
Publishers Paper Company
Tillamook Division
3111 Third Street
Tillamook, Oregon 97141

LEF:sjl

