

# County Surveyor's Record, Tillamook County, Oregon

CHAINS

$\frac{1}{4}$  Cor  $\frac{24}{25}$  5S11 6a

Found 2x4" Ced post Marked  
 $\frac{1}{4}$  S with Hub Tack  
 I set 2 $\frac{1}{2}$ " I.P. in place of old  
 Post. Set old post 0 $\frac{5}{8}$  East of  
 I.P., Also Set A 4"x4"x108"  
 White Ced post 36" into the  
 Ground 1 $\frac{5}{8}$  East of Cor.

New BT'S

6" Spr N67°W

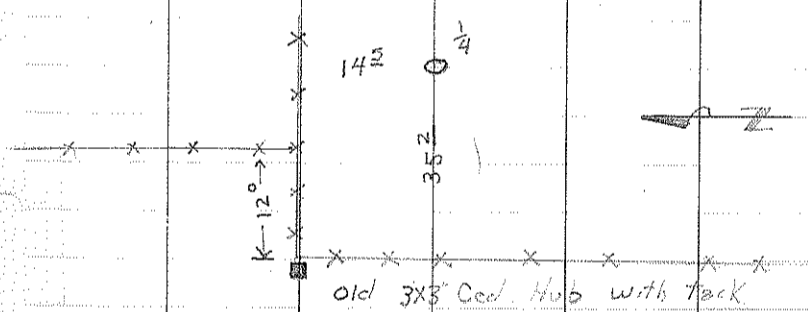
45 $\frac{31}{64}$

$\frac{1}{4}$  S24 BTCS

12" Spr S61°E

168 $\frac{88}{64}$

$\frac{1}{4}$  S25 BTCS



S. J. Skinner

G. Arthur

See map: A-362

A-1113

C-139

BOOK 5

11/27/70

*Handwritten signature*  
 Co.