

CHAINS

RESTORED CORNER FOR STATE OF OREGON-DEPARTMENT OF FORESTRY

One quarter corner common to Sections 1 and 12, T.3S, R.9W, W.M., Tillamook County, Oregon.

ORIGINAL

6" Bearberry for corner (now missing) from which a:

72" Fir bears S48W 37 lks.; now 84" by 15 ft. high stub, scribe 4 visible.

8" Alder bears N75W 15 lks.; now 23" (bearing N83W) bark scribes 1/4S visible.

RESTORED

Set 1 1/2" x 36" galvanized iron pipe with 3" bronze cap marked "OREGON STATE BOARD OF FORESTRY 1/4 S1 S12 1963 RS401", 33 inches in ground, and from which a:

26" Alder bears S42W 43.4 ft.; scribed 1/4 S12 BT RS401.

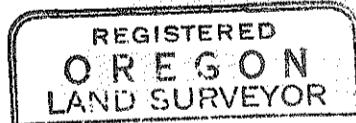
13" Alder bears N79E 19.8 ft.; scribed 1/4 S1 BT.

Set 4 x 4 x 60" white painted Cedar post 1.5 ft. NE of corner pipe. Oregon State Forestry Department metal location poster on original Alder BT.

Dated December 19, ^{1963 ad} ~~1960~~

Restored by Al Duncan under my direction.
Al Duncan Engr. Tech.

Present and witnessed by C. Curl



Richard A. Morris
MAY 10, 1957
Richard A. Morris
401