



UNITED STATES
DEPARTMENT OF THE INTERIOR
BUREAU OF LAND MANAGEMENT
State Office
710 N. E. Holladay
Portland 12, Oregon

IN REPLY REFER TO:

100.4a

ENGR 9

December 6, 1962

County Surveyor
Tillamook County
Tillamook, Oregon

Dear Sir:

Enclosed are diagrams showing the brass caps set during the past cadastral survey field season in the following locations:

T. 5 S.	R. 10 W.
T. 3 S.	R. 9 W.
T. 3 S.	R. 8 W.
T. 3 S.	R. 7 W.
T. 5 S.	R. 11 W.

Sincerely yours,

Thomas A. Tillman

Thomas A. Tillman
Chief, Branch of Cadastral
Engineers

Enclosures 5

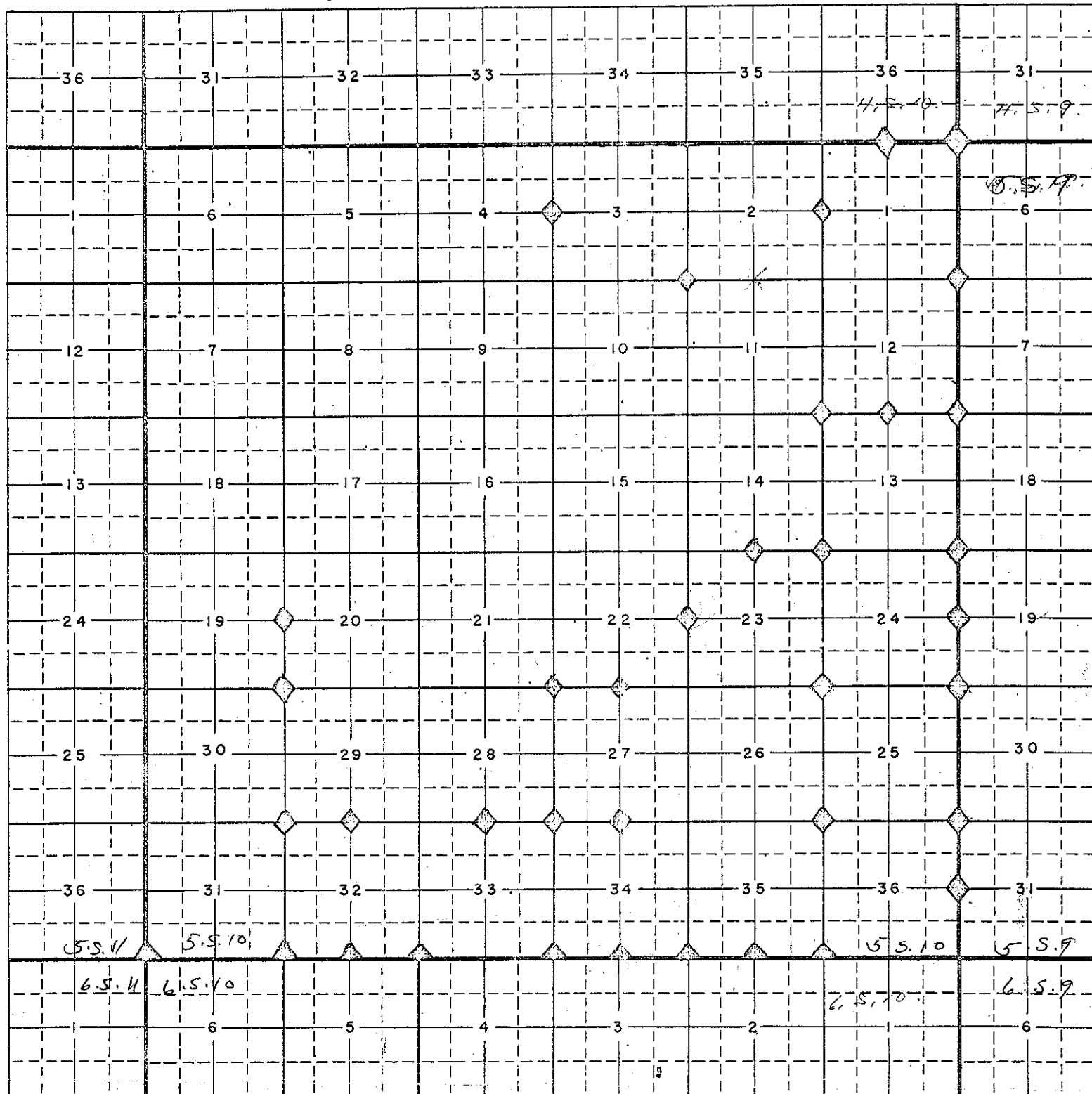
Book 1 Page 497

UNITED STATES
DEPARTMENT OF THE INTERIOR
BUREAU OF LAND MANAGEMENT

TOWNSHIP DIAGRAM

SCALE: 1 INCH = 1 MILE

TOWNSHIP 5 South, RANGE 10 West, Willamette MER.
STATE Oregon



Salem District

Siuslaw National Forest

Tillamook County

◆ original or acceptable corners remonumented

Book I

497