

CHAINS

ESTABLISHED CORNERS FOR OREGON STATE BOARD OF FORESTRY
(See official plat)

Northwest One Sixteenth corner for Section 11, T2S,
R10W, W.M., Tillamook County, Oregon.

ESTABLISHED

Var. 21 1/2 E

Set 1 1/2" x 36" galvanized iron pipe with 3" bronze cap marked "OREGON STATE BOARD OF FORESTRY NW 1/16 S11 1960 RS401", 40 inches in ground, covered with dirt, and from which a:

28" Spruce bears S37W 107.5 ft.; scribed NW 1/16 S11 BT RS401.
24" Spruce bears S89 1/2 W 94.9 ft.; scribed NW 1/16 S11 BT.

Oregon State Board of Forestry metal location poster on 28" Spruce BT.
Set 4" x 4" x 52" white painted Cedar post S89 1/2 E 41.8' from pipe, on edge of pasture.

North One Sixteenth corner common to Sections 11 and
12, T2S, R10W, W.M., Tillamook County, Oregon.

ESTABLISHED

Var. 21 1/2 E

Set 1 1/2" x 36" galvanized iron pipe with 3" bronze cap marked "OREGON STATE BOARD OF FORESTRY N 1/16 S11 S12 1960 RS401", 30 inches in ground, and from which a:

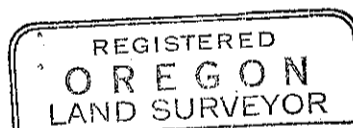
50" Hemlock bears N20W 59.6 ft.; scribed N 1/16 S11 BT RS401.
9" Spruce bears N35E 53.2 ft.; scribed N 1/16 S12 BT.

Oregon State Board of Forestry metal location poster on 50" Hemlock BT.
Set 4" x 4" x 52" white painted Cedar post 1.0' S.W. of pipe.

Dated August 19, 1960

Established by

Present and witnessed by H. Russell
G. Nylund
J. Sehorn



Richard A. Morris
MAY 10, 1957
Richard A. Morris
401