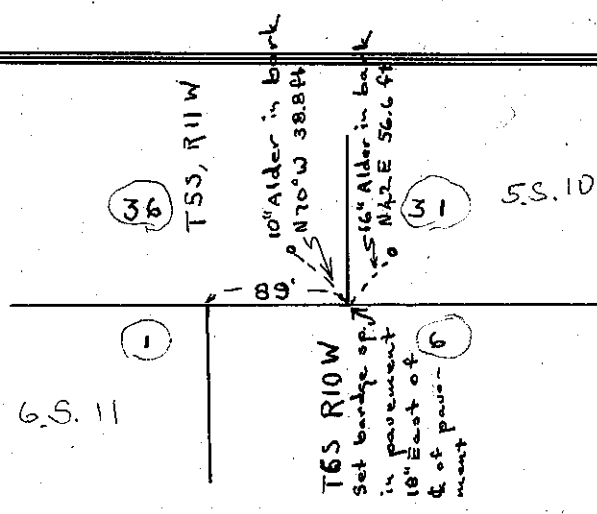


Sec Cors. in  
36, 31, 1, 6  
T5S, R10 & 11W  
T6S, R10 & 11W

CHAINS  
Sec cors  
36, 31, 1, 6  
T5S, R10, 11W  
T6S, R10, 11W



In the Presence of Wm. E. Anderson Sr. & Jr. March 1, 1951.

1/4 Cor Bet  
Sec 11 & 12  
T1S, R10W

1/4 Cor  
Bet. 11, 12  
T1S, R10W

Set a spruce stake 4"X4" -1/4 marked, no trees available on tidelands.  
In the Presence of W.E. Anderson Sr. & Jr. 1950

Sec Cor. to 1,  
6, 7 & 12  
T3N, R9 & 10W

Sec Cor  
1, 6, 7, 12  
T3N, R9, 12  
W

Found one alder tree with nails and found 1" rod in road.  
Remarked 24" alder in bark S5-OW, 43.0 ft. and N. W. Cor  
of cheese factory S76-15E, 206.4 ft. Lead plug in conc. curb  
on upstream side of bridge east end S86W, 181.10 ft.  
In the presence of W.E, Anderson and Francis L. Smith, April, 1950

1/4 Cor north  
side of 32  
T2N, R10W

1/4 cor  
N. side  
32  
T2N, R10W

Set cedar Stake and remarked 36" cedar old marks decayed  
N45E, 19.6 ft., 36" cedar  
24" cedar N72W, 21.7 ft. Marked 1/4 C. S.  
In the presence of W.E. Anderson and Francis L. Smith, April, 1950

Sec Cor.  
33, 34, 3, 4  
T1, 2S, R10W

OLD TREES  
found-20" Hem. N50E, 15 links (checked)  
found-48" spr. N18W, 21 links (checked) found to be 19.3 ft.  
found 32" hem. S80W, 31 links (checked)  
Rotten and no marks 56" hem. S45E 19 links (checked)  
Corner 2" spruce limb next to rock  
NEW TREES  
Made 18" hem N80W 11.2 ft  
Made 6" hem N80E 34.7 ft  
made 6" hem N 5E 28.6 ft  
In the presence of W.E Anderson and Francis L. Smith, April 1950

Sec. Cor.  
21, 22, 28,  
29  
T2S, R9W

REWITNESS OF SEC. COR.  
1" iron pipe from which 36"hem N62E 39.7 ft  
6"hem N76-30W 15.8 ft  
30"bedar S2-30W-10.18 ft. / 01.8  
~~30"bedar S2-30W-10.18 ft. / 01.8~~  
In the presence of W.E. Anderson and Feb. 12 1950

Sec Cor.  
23, 24, 25,  
26  
T1S, R8W

REWITNESS OF SEC. COR.  
Found hem and 10" fir- both dead but readable  
Made new BT's  
36" fir S3E 16.8 ft.  
36" fir N83-45W 22.4 ft  
Sec cor. set 2" iron pipe  
In the presence of W.E. Anderson and Francis L. Smith, May 1950

1/16 cor  
bet 25, 26  
T1S, R8W

Set a 1" galv iron pipe and witnessed 1/16 cor 1300.97 ft. S  
of sec cor 23, 24, 25, 26 T1S, R8W on a true sighted line with  
Sec cor 26, 25, 35, 36 set in southedge of river bank and BT's are  
8" alder S10E 12.4 ft.  
20"fir S73W 17.6 ft  
In thr presence of W.E. Anderson and Francis L. Smith May 1950

SEE PG. 87