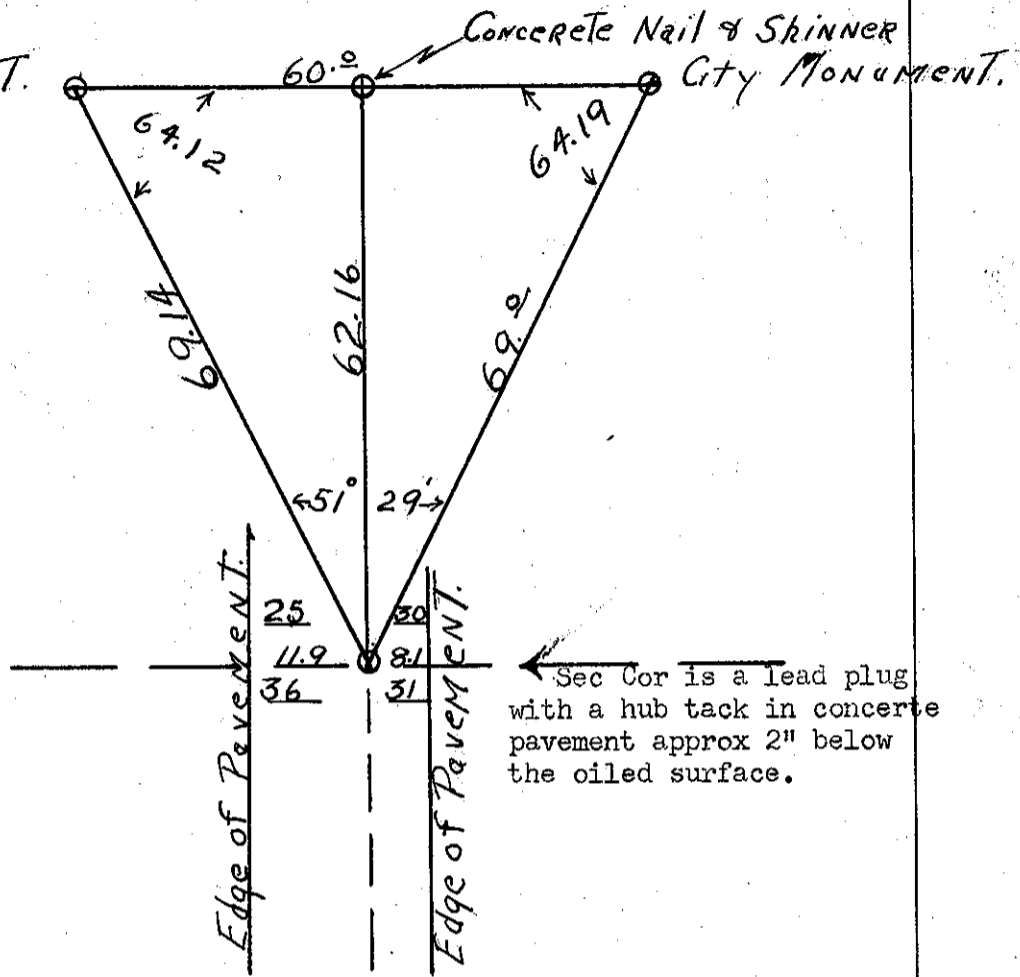


CHAINS  
 Sec Cor  
 Sec 25,30  
 36,31. T.  
 1.S.R.9,  
 10.W.

CITY  
 MONUMENT.



Sec Cor is a lead plug with a hub tack in concrete pavement approx 2" below the oiled surface.

1/4 Cor Bet  
 Sec 24,25  
 T.3.N.R.  
 10.W.

2" iron pipe driven flush with the ground from which a 48" Burnt stump Bears East 108.6 Feet. with a hub in it.  
 A hub in a large Burnt stump Bears S6-30E 90 Feet.  
 In the presence of W.E. Anderson, Louis Terwilliger, Jack Graham.  
 June 1946.

1/16 Cor  
 S.E. Cor  
 of the N.  
 E. 1/4 of the  
 N.E. 1/4 Of  
 Sec 31. T.  
 2.S.R.9.W.

Hemlock 36" Bears N67-45E 8.2 Feet.  
 Hemlock 20" Bears N73-W 11.1 Feet.  
 In the presence of Harry Kerr.

S.W. Cor  
 of the N.  
 E. 1/4 of the  
 N.E. 1/4 of  
 Sec 31.T.  
 2.S.R.9.W.

Hemlock 30" Bears S3-30W 6.1 Feet  
 Hemlock 26" Bears N55-45E 20 Feet.  
 Harry Kerr.

West Bet  
 Sec 30,31  
 from cor  
 29,30,31,  
 32.T.2.S.  
 R.9.W.

Found old bearing tree marked 24" Hemlock N87-E 31 Feet.  
 Hemlock 30" Bears S8-30W 28.8 Feet.  
 In the presence of Henry Cool, Ralph Blum, Frank Mills,  
 Eyevett Wells.

East Bet  
 Sec 29,32.  
 1/4 Cor T.2.  
 S.R.9.W.

Reset cor from old B.T. which was uprooted and marked.  
 Hemlock 10" Bears N10-E 5.7 Feet.  
 Hemlock 24" Bears S64-W 4.4 Feet.  
 In the presence of Henry Cool, Eyevett Wells, Ralph Blum.