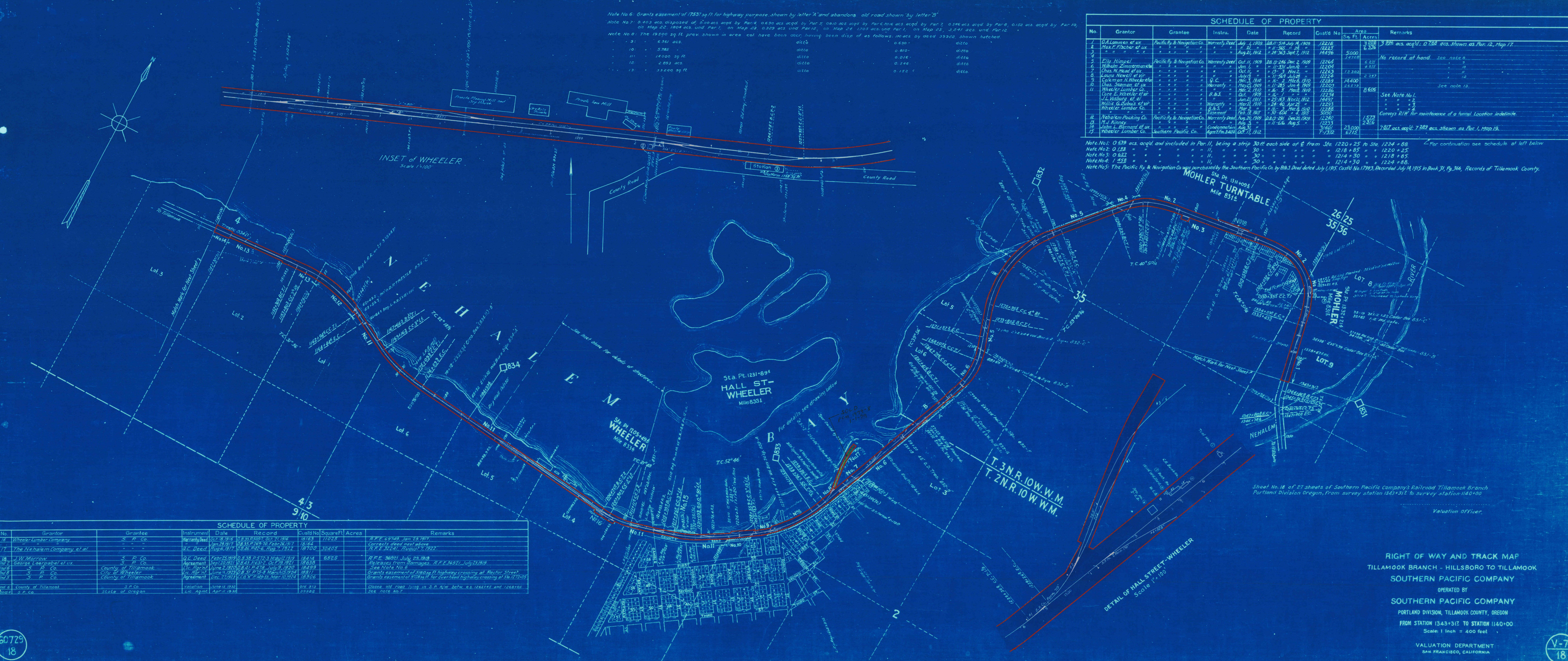


Note No. 6: Grants easement of 17531 sq ft. for highway purpose, shown by letter "A" and abandons old road shown by letter "B"
 Note No. 7: 3,403 acs. disposed of, 6,110 acs. acq'd by Par. 4, 0,630 acs. acq'd by Par. 5, 0,810 acs. acq'd by Par. 6, 806 acs. acq'd by Par. 7, 0,546 acs. acq'd by Par. 8, 0,182 acs. acq'd by Par. 10, on Map 22, 1,804 acs. and Par. 1, on Map 23, 0,329 acs. and Par. 12, on Map 24, 1,705 acs. and Par. 1, on Map 25, 3,241 acs. and Par. 12
 Note No. 8: The 19,500 sq ft. prev. shown in area, col. have been accur. having been disp. of as follows: 1,065 acs. by deed 39,562, shown hatched

9	6,561 acs.	ditto	0,630	ditto
10	5,785	ditto	0,810	ditto
11	14,000 sq ft.	ditto	0,182	ditto
12	2,893 acs.	ditto	0,546	ditto
13	33,200 sq ft.	ditto	0,182	ditto

No.	Grantor	Grantee	Instru.	Date	Record	Cust'd No.	Area	Remarks
							Sq. Ft.	Acres
1	O.A. Lommen et ux	Pacific Ry. & Navigation Co.	Warranty Deed	July 1, 1909	D.B. 11-514, Jul. 1, 1909	12216	3,208	3,208 acs. acq'd. 0.288 acs. shown as Par. 12, Map 17
2	Max E. Fischer et ux	" " " "	" " "	" " "	" " "	12225	6,326	" " "
3	" " " "	" " " "	" " "	" " "	" " "	12227	5,000	" " "
4	" " " "	" " " "	" " "	" " "	" " "	12228	1,876	" " "
5	Ellis Hinjok	Pacific Ry. & Navigation Co.	Warranty Deed	Oct. 11, 1909	D.B. 13-246, Dec. 2, 1909	12264	6,877	No record at hand. See note 8
6	William Zimmerman	" " " "	" " "	" " "	" " "	12204	6,877	" " "
7	Chas. W. Mead et ux	" " " "	" " "	" " "	" " "	12263	1,336	" " "
8	Laura Newell et vir	" " " "	" " "	" " "	" " "	12224	2,347	" " "
9	William K. Hinkelstein	" " " "	" " "	" " "	" " "	12229	14,400	" " "
10	Chas. Seaman et ux	" " " "	" " "	" " "	" " "	12203	6,675	" " "
11	Wheeler Lumber Co.	" " " "	" " "	" " "	" " "	12286	6,606	See Note No. 1
12	Case E. Wheeler et vir	" " " "	" " "	" " "	" " "	12234	"	" " "
13	J.L. Mosburg et al.	" " " "	" " "	" " "	" " "	12917	"	" " "
14	Willie G. Dubois et vir	" " " "	" " "	" " "	" " "	12293	"	" " "
15	Wheeler Lumber Co.	" " " "	" " "	" " "	" " "	12288	"	" " "
16	" " " "	" " " "	" " "	" " "	" " "	12253	"	" " "
17	Nehalem Packing Co.	Pacific Ry. & Navigation Co.	Warranty Deed	Aug. 20, 1909	D.B. 13-291, Dec. 1, 1909	12240	1,575	Corry's Riv. for maintenance of a tunnel. Location indefinite.
18	M.J. Kinney	" " " "	" " "	" " "	" " "	12253	2,816	" " "
19	John L. Estgaard et ux	" " " "	" " "	" " "	" " "	12901	23,000	" " "
20	Wheeler Lumber Co.	Southern Pacific Co.	Agmt. March 3, 1909	Oct. 17, 1912	" " "	7,352	6,715	7,817 acs. acq'd. 7,289 acs. shown as Par. 1, Map 19.

Note No. 1: 0.639 acs. acq'd. and included in Par. 11, being a strip 30 ft. each side of & from Sta. 1220+25 to Sta. 1224+88 For continuation see schedule at left below
 Note No. 2: 0.182 " " " " " " " " 30 " " " " " " " " 1218+85 " " 1220+25
 Note No. 3: 0.621 " " " " " " " " 30 " " " " " " " " 1214+30 " " 1218+85
 Note No. 4: 1.458 " " " " " " " " 30 " " " " " " " " 1214+30 " " 1224+88
 Note No. 5: The Pacific Ry. & Navigation Co. was purchased by the Southern Pacific Co. by B.B. Deal dated July 1, 1915. Cust'd No. 17993, Recorded July 14, 1915 in Book 31, Pg. 366, Records of Tillamook County.



INSET of WHEELER
Scale 1"=100'

DETAIL OF HALL STREET - WHEELER
Scale 1"=100'

Sheet No. 14 of 27 sheets of Southern Pacific Company's Railroad Tillamook Branch
Portland Division Oregon, from survey station 1345+312 to survey station 1140+00

No.	Grantor	Grantee	Instrument	Date	Record	Cust'd No.	Square Ft.	Acres	Remarks
16	Wheeler Lumber Company	S. P. Co.	Warranty Deed	Oct. 18, 1916	D.B. 33-85027, Oct. 21, 1916	18163	11025	11025	R.F.E. 69749, Jan. 23, 1917.
17	The Nehalem Company et al.	" " "	" " "	Jan. 29, 1917	D.B. 35-2769-70, Febr. 26, 1917	18164	"	"	Corrects deed next above
18	J.W. Morrow	S. P. Co.	Q.C. Deed	Aug. 6, 1917	D.B. 36-1942-6, Aug. 7, 1917	18700	30,405	30,405	R.F.E. 32241, August 7, 1922.
19	George Laersabel et ux	S. P. Co.	Q.C. Deed	Febr. 25, 1919	D.B. 38-572-3, Mid July 1919	18414	6,825	6,825	R.F.E. 36921, July 23, 1918.
20	County of Tillamook	County of Tillamook	Agreement	Sep. 20, 1921	D.B. 43-1637, Oct. 18, 1921	18610	"	"	Releases from mortgages. R.F.E. 36921, July 23, 1918.
21	County of Tillamook	City of Wheeler	Agreement	June 9, 1923	D.B. 51-1476, July 9, 1923	18459	"	"	See Note No. 6.
22	County of Tillamook	County of Tillamook	Agreement	June 9, 1923	D.B. 51-1476, July 9, 1923	18459	"	"	Grants easement of 3165 sq. ft. highway crossing at Rect. Street
23	County of Tillamook	State of Oregon	Agreement	Dec. 27, 1923	D.B. 51-1476, July 9, 1923	18459	"	"	Grants easement of 9718 sq. ft. for over-head highway crossing at Sta. 1272+05
24	County of Tillamook	State of Oregon	Agreement	June 14, 1925	" " "	071373	"	"	Closes old road strip in S.P. R.W. betw. ea. 1282+45 and 1289+05
25	County of Tillamook	State of Oregon	Agreement	Apr. 7, 1933	" " "	39322	"	"	See note No. 7.

RIGHT OF WAY AND TRACK MAP
 TILLAMOOK BRANCH - HILLSBORO TO TILLAMOOK
 SOUTHERN PACIFIC COMPANY
 OPERATED BY
 SOUTHERN PACIFIC COMPANY
 PORTLAND DIVISION, TILLAMOOK COUNTY, OREGON
 FROM STATION 1343+312 TO STATION 1140+00
 Scale: 1 Inch = 400 feet
 VALUATION DEPARTMENT
 SAN FRANCISCO, CALIFORNIA