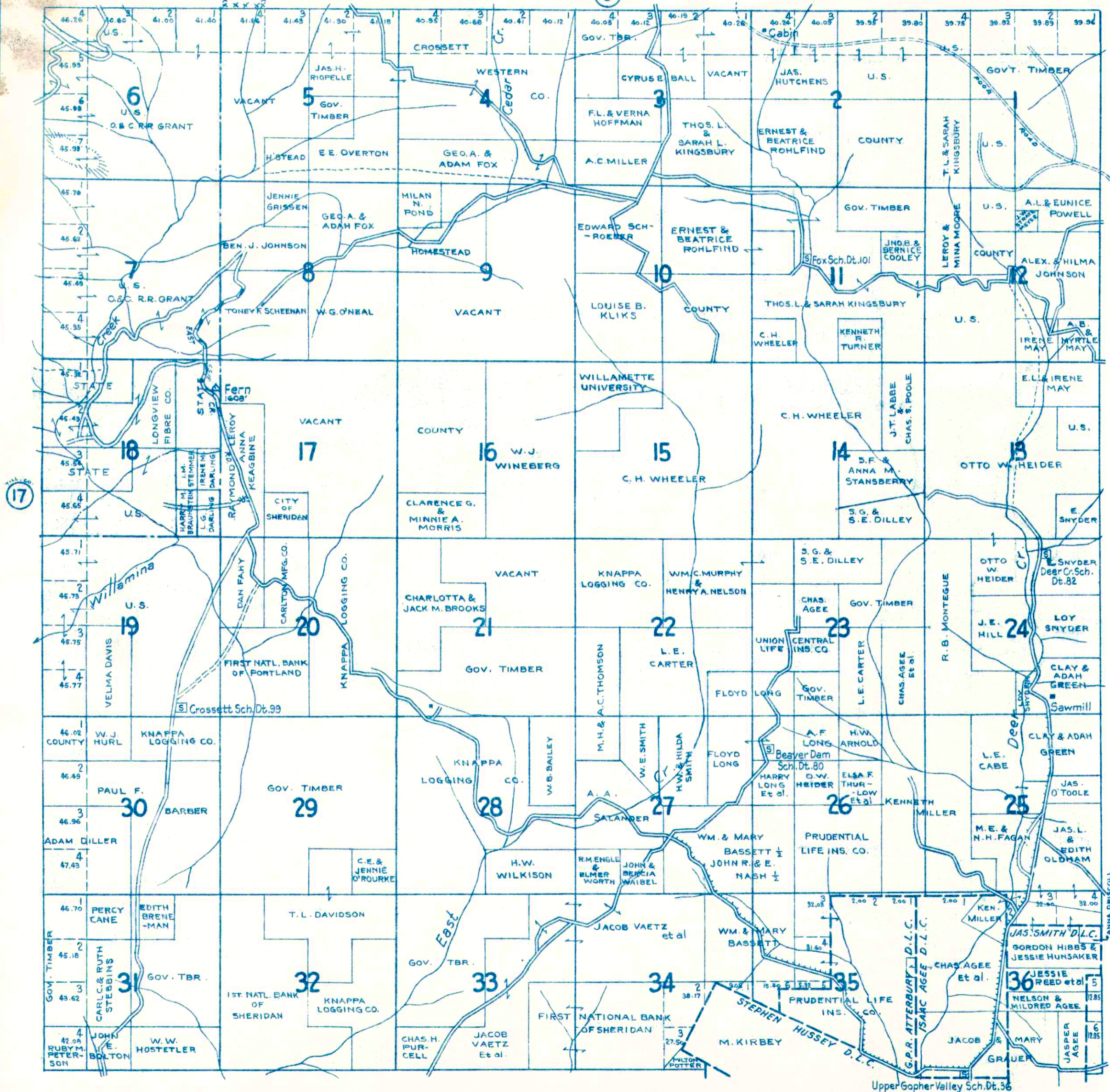


TOWNSHIP 4 S., RANGE 6 W.W.M. TILLAMOOK CO. ORE.

111 SOUTH 10TH ST. TACOMA, WASHINGTON
1222 THIRD AVE., SEATTLE, WASHINGTON
TILL. DATED FEB. 1974

9



Reproduction in whole
or part for personal use or
resale is prohibited by law.

LEGEND

- STATE HWY. ⑥ U.S. HWY. 101
- PAVED HIGHWAYS
- IMPROVED DIRT ROADS
- DIRT ROADS
- INFERIOR ROADS
- RAILROADS
- TRAILS
- INTERMITTENT CREEKS
- NATIONAL FOREST BDY. x x x x x
- ELEC. PWR. TRANS. LINES