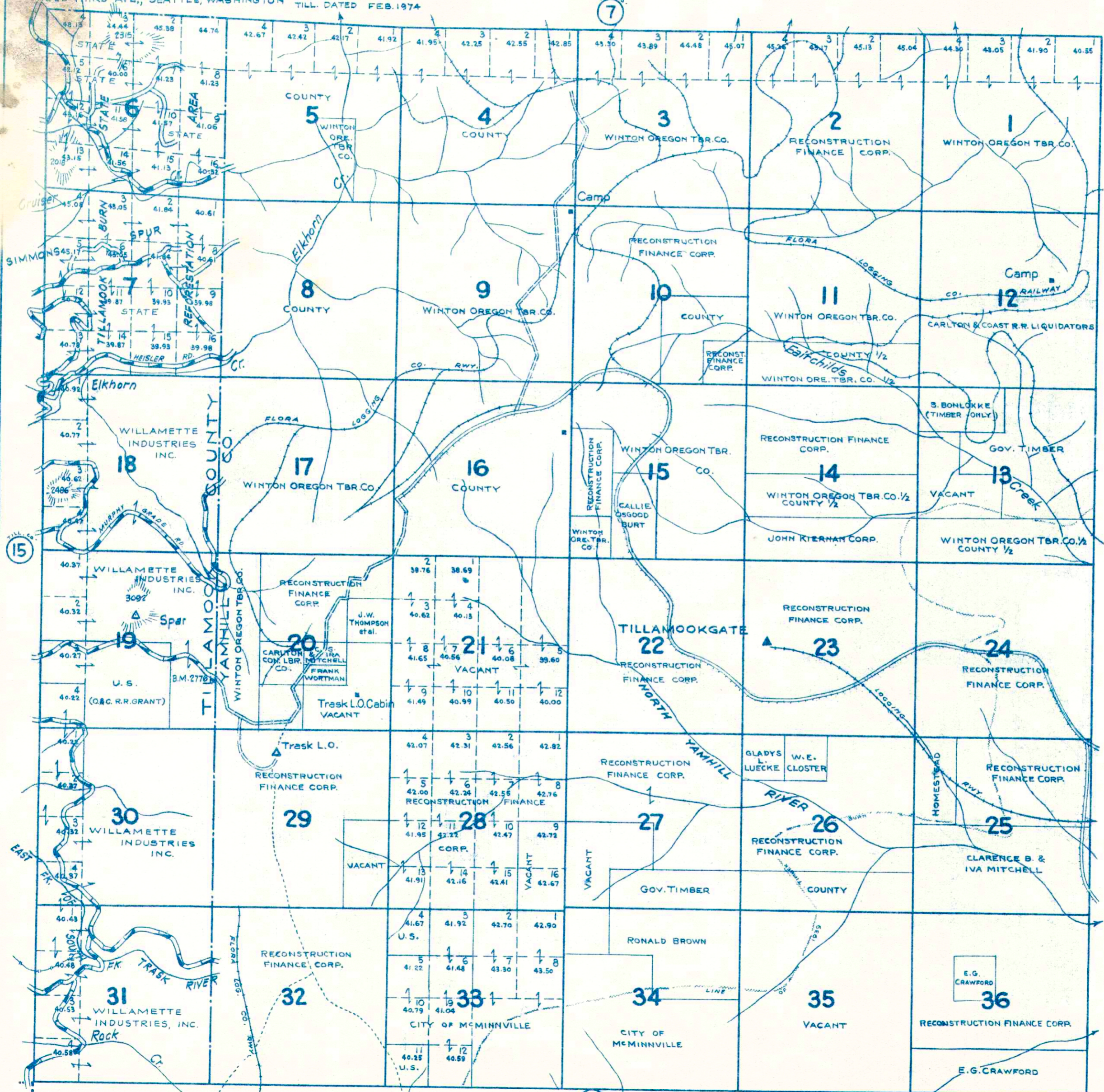


# TOWNSHIP 2 S., RANGE 6 W.W.M. TILLAMOOK CO. ORE.

111 SOUTH 10TH ST., TACOMA, WASHINGTON  
222 THIRD AVE., SEATTLE, WASHINGTON  
TILL. DATED FEB. 1974



Reproduction in whole  
or part for personal use or  
resale is prohibited by law.

- LEGEND**
- STATE HWY. ⑥ U.S. HWY. 101
  - PAVED HIGHWAYS
  - IMPROVED DIRT ROADS
  - DIRT ROADS
  - INFERIOR ROADS
  - RAILROADS
  - TRAILS
  - INTERMITTENT CREEKS
  - NATIONAL FOREST BDRY. x x x x x
  - ELEC. PWR. TRANS. LINES