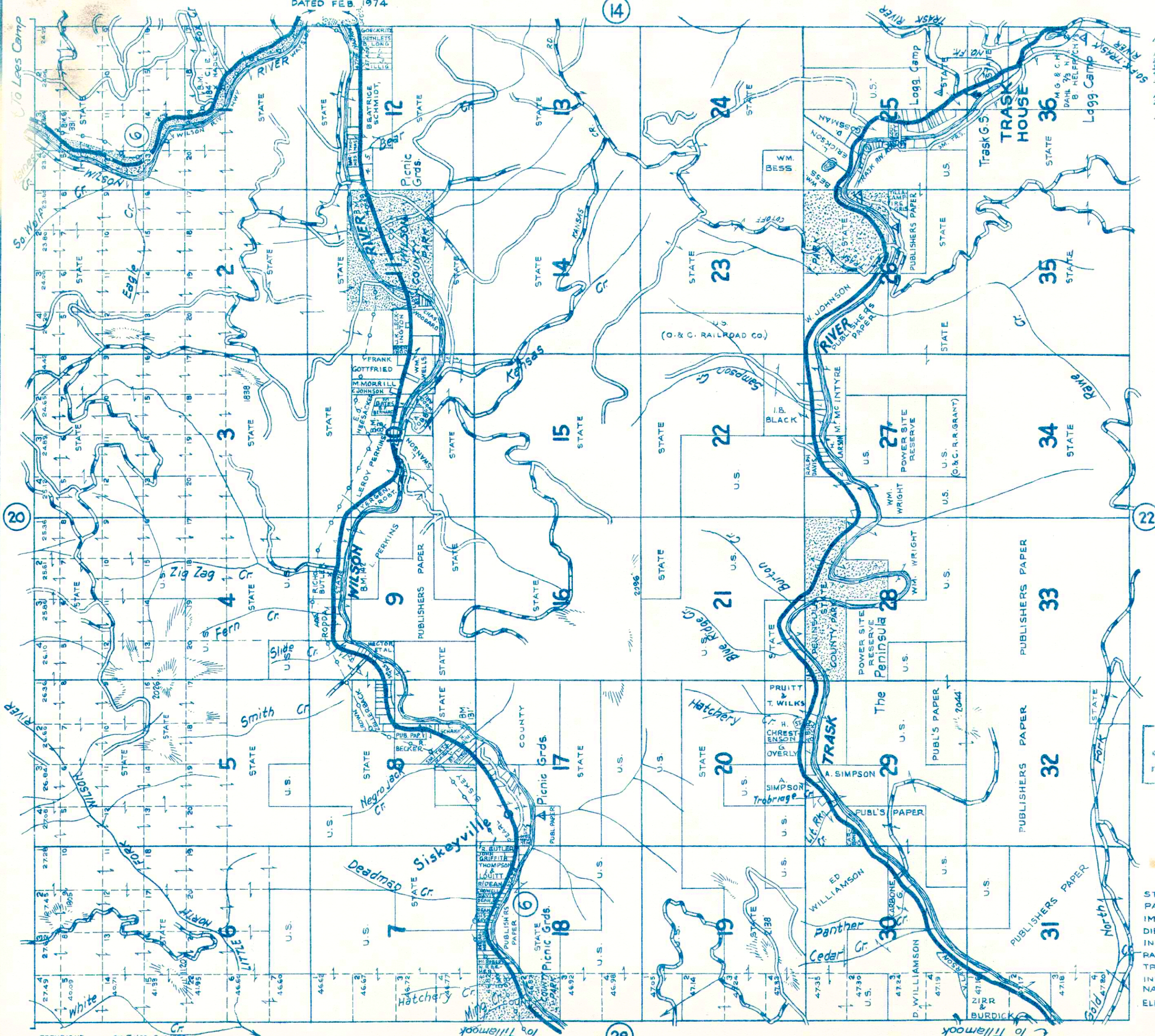


TOWNSHIP 1 S., RANGE 8 W.W.M. TILLAMOOK COUNTY ORE.

DATED FEB. 1974



- SMALL TRACTS**
- SEC. 8
 - 1. ARNOLD GAUENWALD
 - SEC. 12
 - 1. W. RUTLEDGE
 - 2. T. SAARINEN
 - 3. D. PEARSON
 - FRANK MCGINLEY, ET AL.
 - 4. " " SEC. 27
 - 5. " " SEC. 29
 - 1. E. HARTMAN
 - 2. D. STOUT
 - SEC. 29
 - 1. M. SCHNEIDER

Reproduction in whole or part for personal use or resale is prohibited by law.

- LEGEND**
- STATE HWY. (6) U.S. HWY. (101)
 - PAVED HIGHWAYS
 - IMPROVED DIRT ROADS
 - DIRT ROADS
 - INFERIOR ROADS
 - RAILROADS
 - TRAILS
 - INTERMITTENT CREEKS
 - NAT'L FOREST BDRYS. XXXXXXX
 - ELEC. PWR. TRANS. LINES