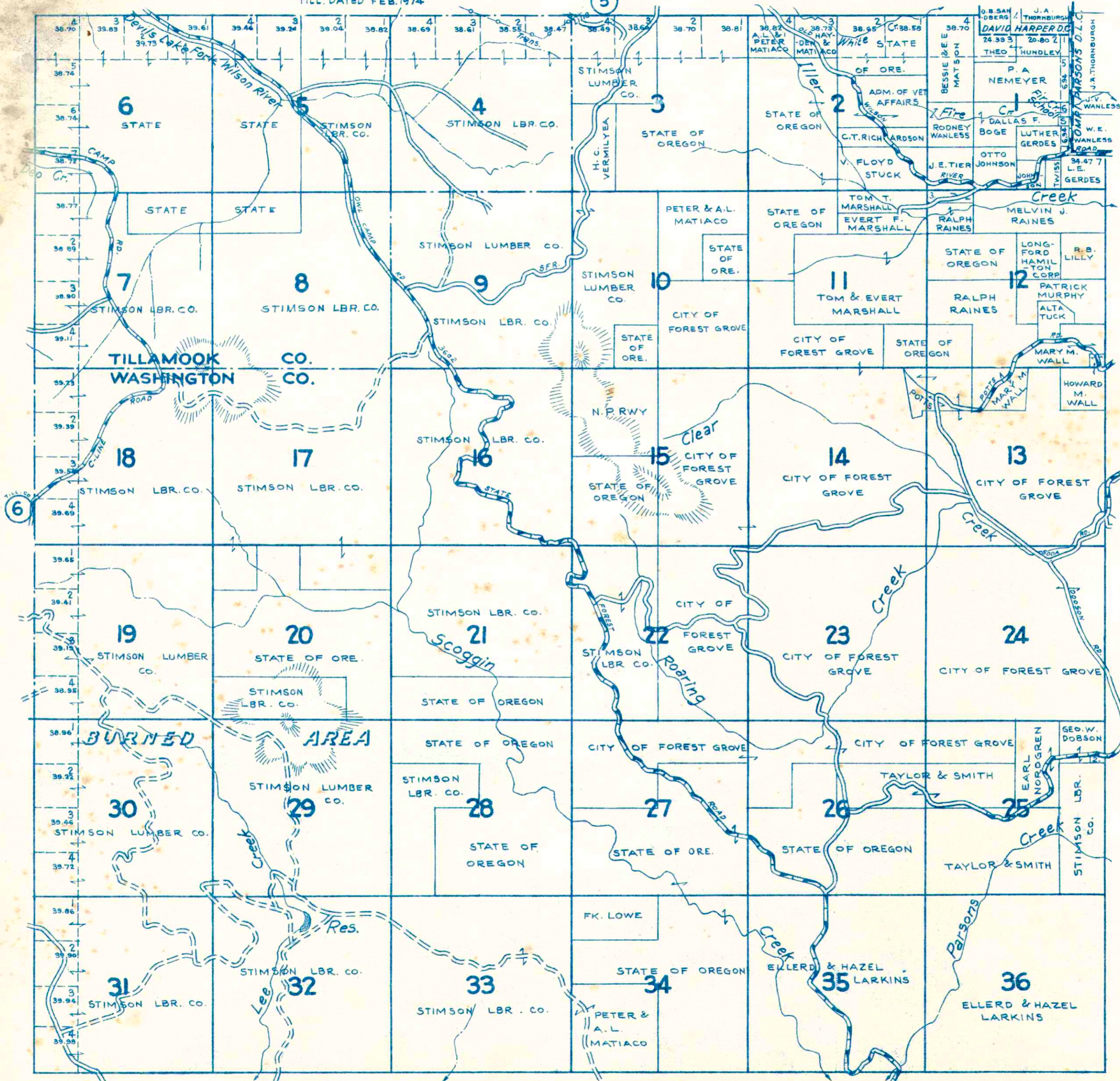


TOWNSHIP 1 N., RANGE 5 W.W.M. TILLAMOOK CO. ORE.

WASH. DATED AUG. 1964

TILL. DATED FEB. 1974



1- W. E. WILLIS
2- E. T. ADLER EST.
3- WORTHINGTON

Reproduction in whole or part for personal use or resale is prohibited by law.

LEGEND

STATE HWY. ⑥	U.S. HWY. 101
PAVED HIGHWAYS	
IMPROVED DIRT ROADS	
DIRT ROADS	
INFERIOR ROADS	
RAILROADS	
TRAILS	
INTERMITTENT CREEKS	
NAT'L FOREST BDRYS	
ELEC. PWR. TRANS. LINES	