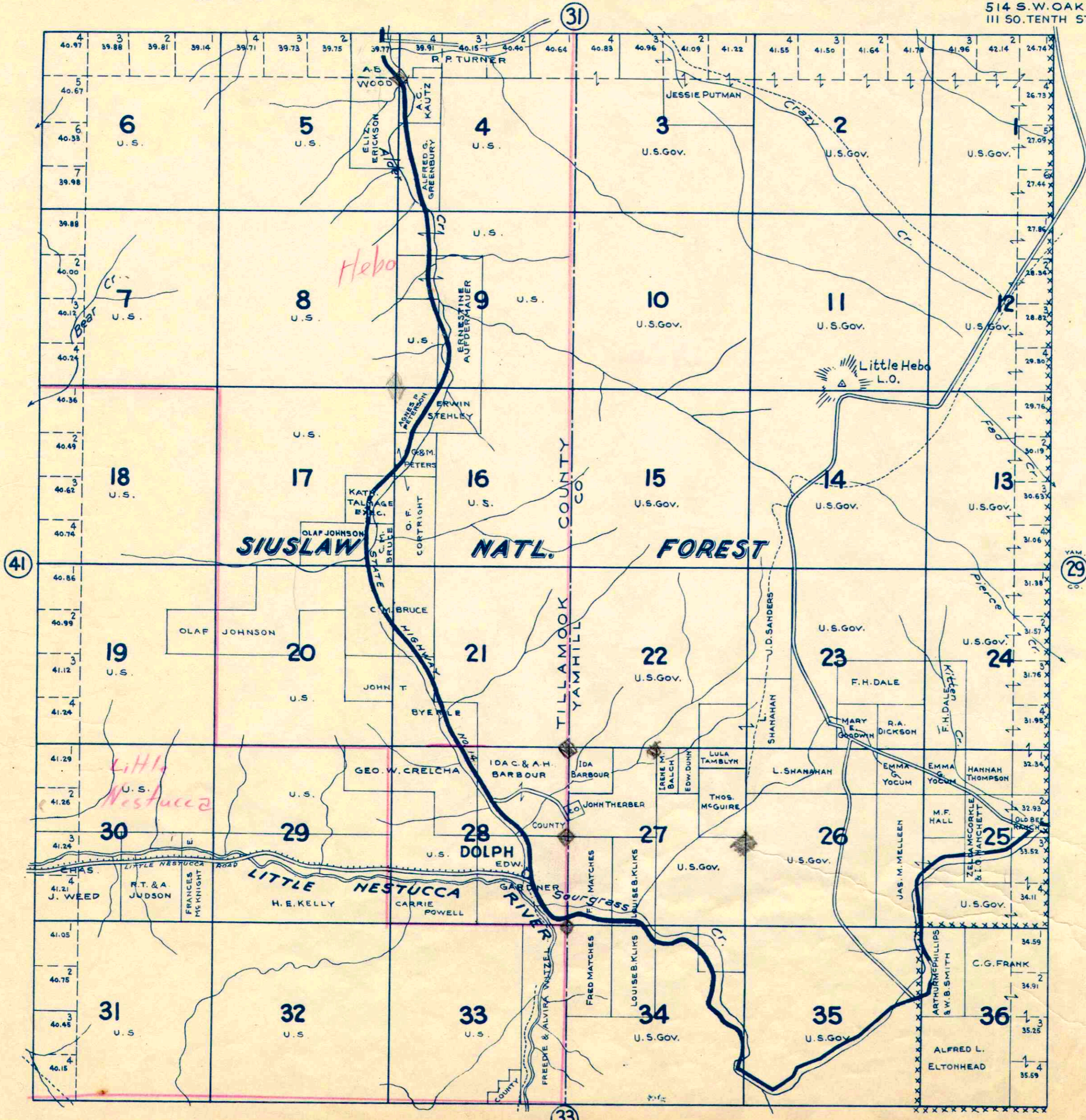


TOWNSHIP 5 S., RANGE 9 W.W.M. TILLAMOOK & YAMHILL CO'S. ORE.

SCALE 2 IN. = 1 MILE.

CHAS. F. METSKER CIVIL ENGINEER
514 S. W. OAK ST., PORTLAND, ORE.
111 SO. TENTH ST., TACOMA, WASH.



- LEGEND -

| | |
|---------------------|--|
| PAVED ROADS | |
| IMPROVED DIRT ROADS | |
| OTHER ROADS | |
| TRAILS | |
| RAILROADS | |
| ELE. RWYS. | |
| SCHOOLS | |