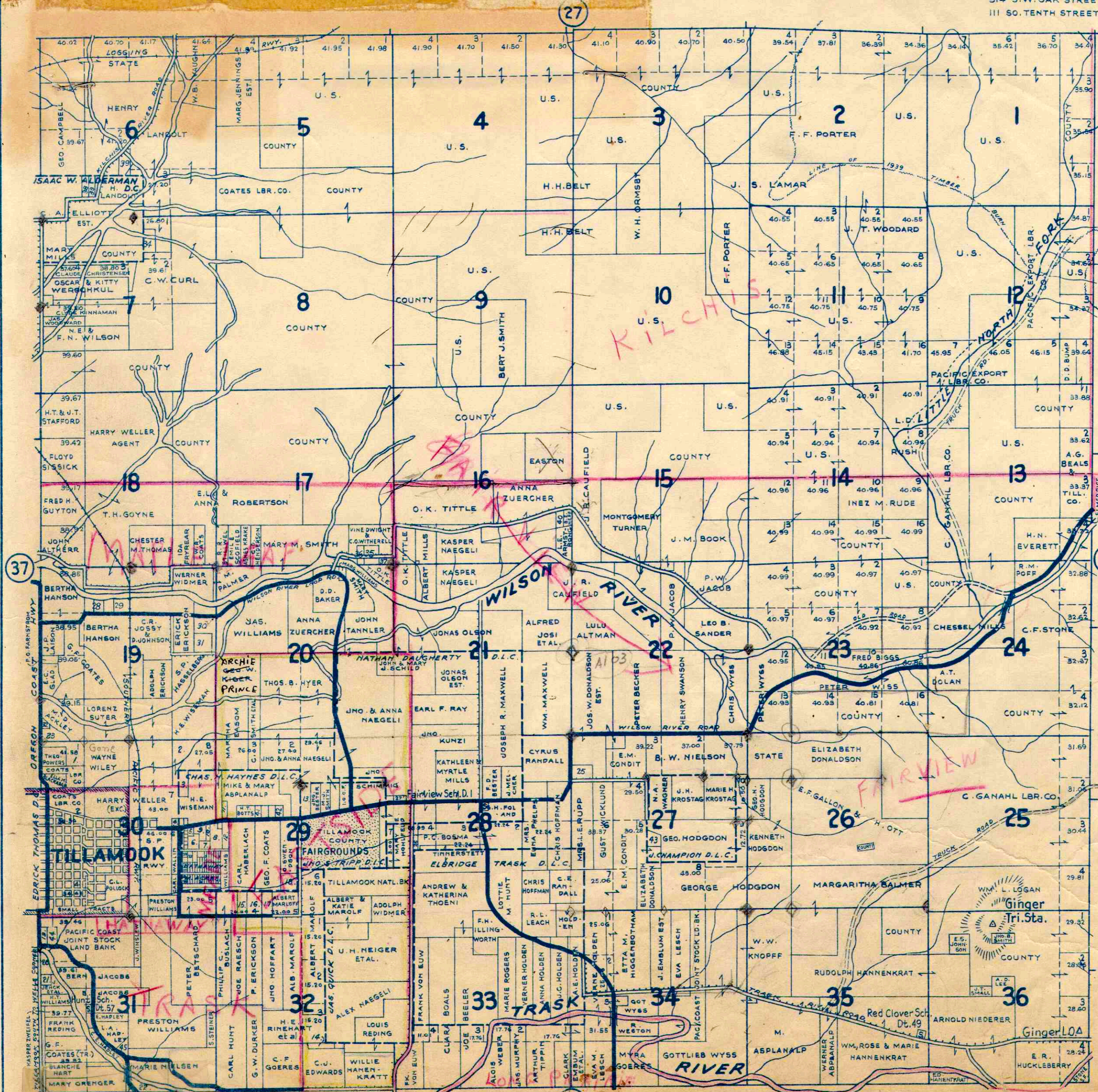


TOWNSHIP 1 S., RANGE 9 W.W.M. TILLAMOOK COUNTY ORE.

SCALE 2 IN. = 1 MILE.

CHAS. F. METSKER CIVIL ENGINEER
514 S.W. OAK STREET, PORTLAND, ORE.
111 SO. TENTH STREET, TACOMA, WASH.



- SMALL TRACTS**
- 1-JENNIE E. PHELPS
 - 2-M.E. CHURCH ASSN.
 - 3- " " "
 - 4-SMALL TRACTS
 - 5- " " "
 - 6- " " "
 - 7-L.E. HEINZE
 - 8-H.H. PROCTOR
 - 9-WILLIAM PLASKER
 - 10-SMALL TRACTS
 - 11-L.C. DANIELS
 - 12-H.H. PROCTOR
 - 13-L.S. JOHNSON
 - 14-C. GOERES
 - 15-KATHLEEN MILLS
 - 16-WM. WARD
 - 17-FRANK MILLS
 - 18-WM. GORMAN
 - 19-JESSIE B. JENCK
 - 20-C. G. GOERES
 - 21-WM. B. PURCELL
 - 22-ED. HADLEY
 - 23-K.K. BUEL
 - 24-
 - 25-C. TOEDTLI
 - 26-O.G. MAPES
 - 27-MARY E. HOHLFELD
 - 28-MAPLE LEAF CREAMERY CO.
 - 29-MARTHA HEISEL
 - 30-A.H. DARBEE
 - 31-ERIC ERICKSON
 - 32-GAIL BUELL ETAL.
 - 33-Geo. CAMPBELL
 - 34-MARG. PERRY
 - 35-EUSINIA ANDERSON
 - 36-A.J. ANDERSON
 - 37-O.K. TITTLE
 - 38-JENNIE M. FINLAYSON
 - 39-CEDRIC JENNINGS ETAL.
 - 40-FRED STRYFFLER
 - 41-M. J. THOMAS
 - 42-STATE
 - 43-ALFRED MAGNUSON
 - 44-L.J. KLINEHAN
 - 45-O.E. EFFENBERGER
- HATHAWAY MEAD ACRES**
- 1-ALICE HOFFERT
 - 2-P.E. FITZWATER
 - 3- " " "
 - 4-JOEL ATKINSON
 - 5-S. WYSS
 - 6-H. HUSHBECK
 - 7-E.D. MCNEIL
 - 8-L.E. DEANE
 - 9-O.F. KNIGHT
 - 10-11-O. HUGGETT
 - 12-JIM SCHWEIGER
 - 13-R.M. HAYS
 - 14-C.M. LAMB
 - 15-JAS. MAPES
 - 16-H.R. HAWLEY
 - 17-H.E. FLAGG
 - 18-ROY MINER
 - 19-G.L. WEBB
 - 20-KERMIT BESTUL
 - 21-FLOYD STANTON
 - 22-R. ANDERSON
 - 23-L.N. PHELPS
 - 24-M.L. KIENLE
 - 25-T.A. PEASE
 - 26-G.N. HODGDON
 - 27-28-E.E. HOFFMAN
 - 29-HULDA ANDERSON ETAL.
- BLOCK 2-**
- 1-2-J.O. BABCOCK & A.E. CLAWSON
 - 3-R.L. THOMAS
 - 4-5-ALICE SARGEANT
 - 6-U.R. WOOD
 - 7-A.E. CLAWSON
 - 8-ALICE SARGEANT
 - 9-CHAS. LANDERS
 - 10-O.R. HODGDON
 - 11-M. HATHAWAY
 - 12-T.H. NOLAN
 - 13-C.R. HODGDON
 - 14-HELEN BESTUL
 - 15-PETE NOTEBOOM
 - 16-M.E. DONALDSON
 - 17-TOM HINES
 - 18-W.L. PROVOST
 - 19-PETE NOTEBOOM
 - 20-JULIA MONTGOMERY

- LEGEND**
- PAVED ROADS
 - IMPROVED DIRT ROADS
 - OTHER ROADS
 - TRAILS
 - RAILROADS
 - ELE. RWYS.
 - SCHOOLS