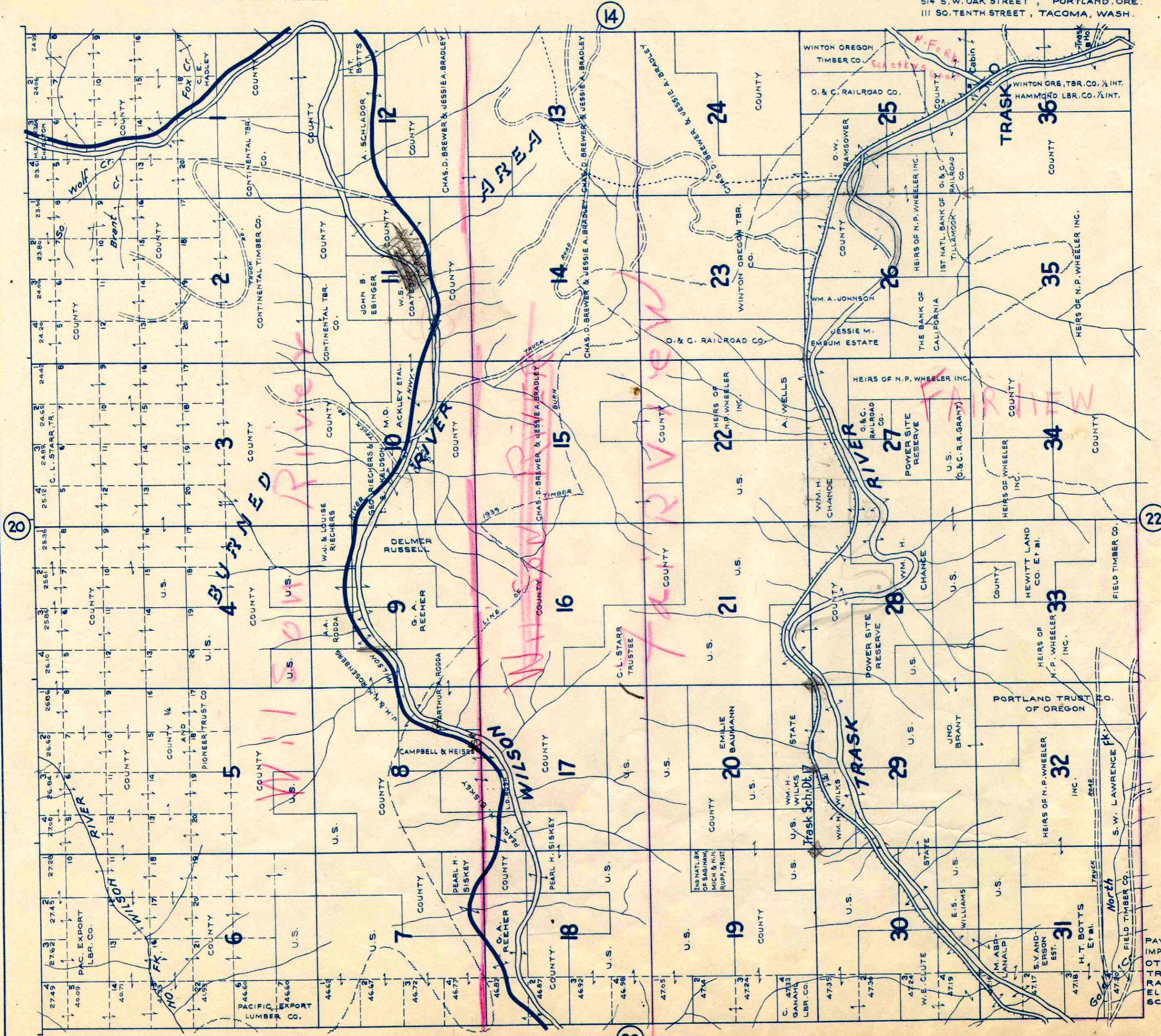


TOWNSHIP 1 S., RANGE 8 W.W.M. TILLAMOOK COUNTY ORE.

SCALE 2 IN. = 1 MILE.

CHAS. F. METSKER CIVIL ENGINEER
514 S. W. OAK STREET, PORTLAND, ORE.
111 SO. TENTH STREET, TACOMA, WASH.



LEGEND

- PAVED ROADS
- IMPROVED DIRT ROADS
- OTHER ROADS
- TRAILS
- RAILROADS
- ELE. RWYS.
- SCHOOLS