

111

MAP OF PROPOSED COUNTY ROAD

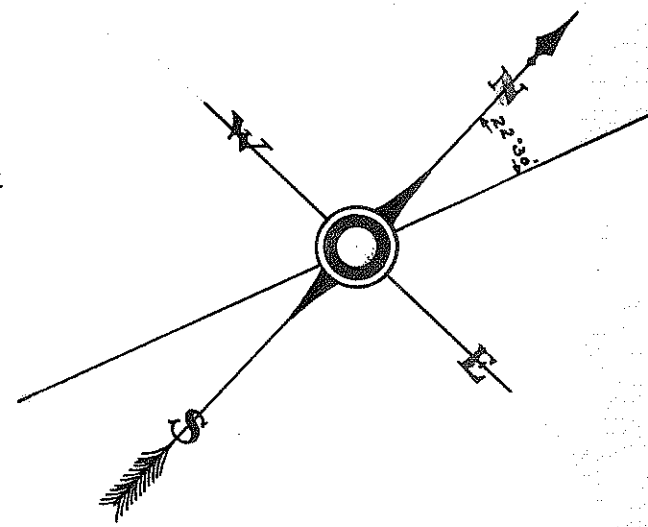
— FROM THE —
LOMAN BRIDGE TO WHEELER
— IN —

SECS 35 AND 36, TP. 3 N. R. 10 W. AND SEC 2, TP. 2 N. R. 10 W. W.M.

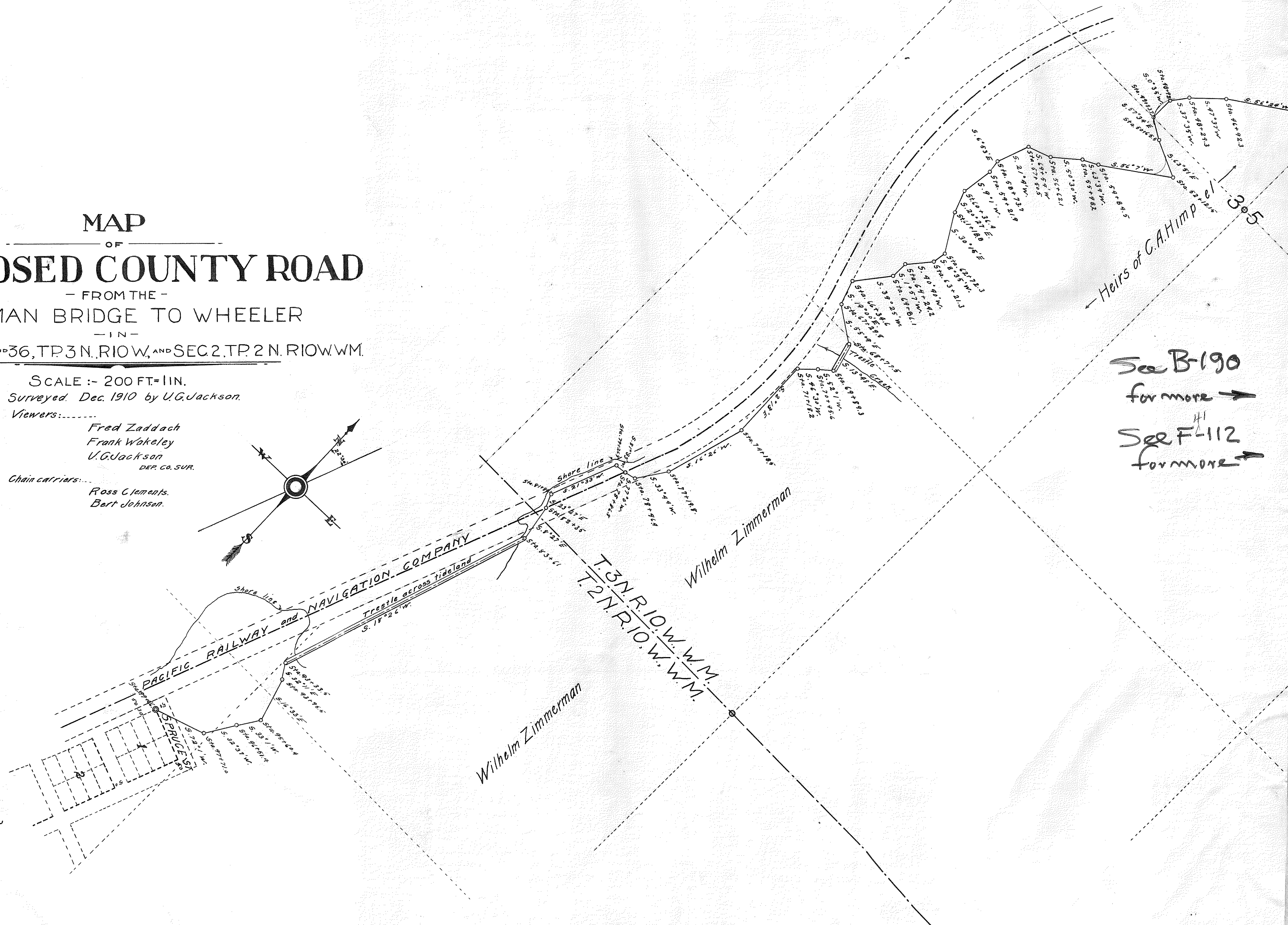
SCALE :- 200 FT. = 1 IN.
Surveyed Dec. 1910 by U.G. Jackson.
Viewers:.....

Fred Zaddach
Frank Wakeley
U.G. Jackson
DER. CO. SUR.

Chain carriers:.....
Ross Clements
Bert Johnson.



WHEELER



See B-190
for more →
See F-112
for more →