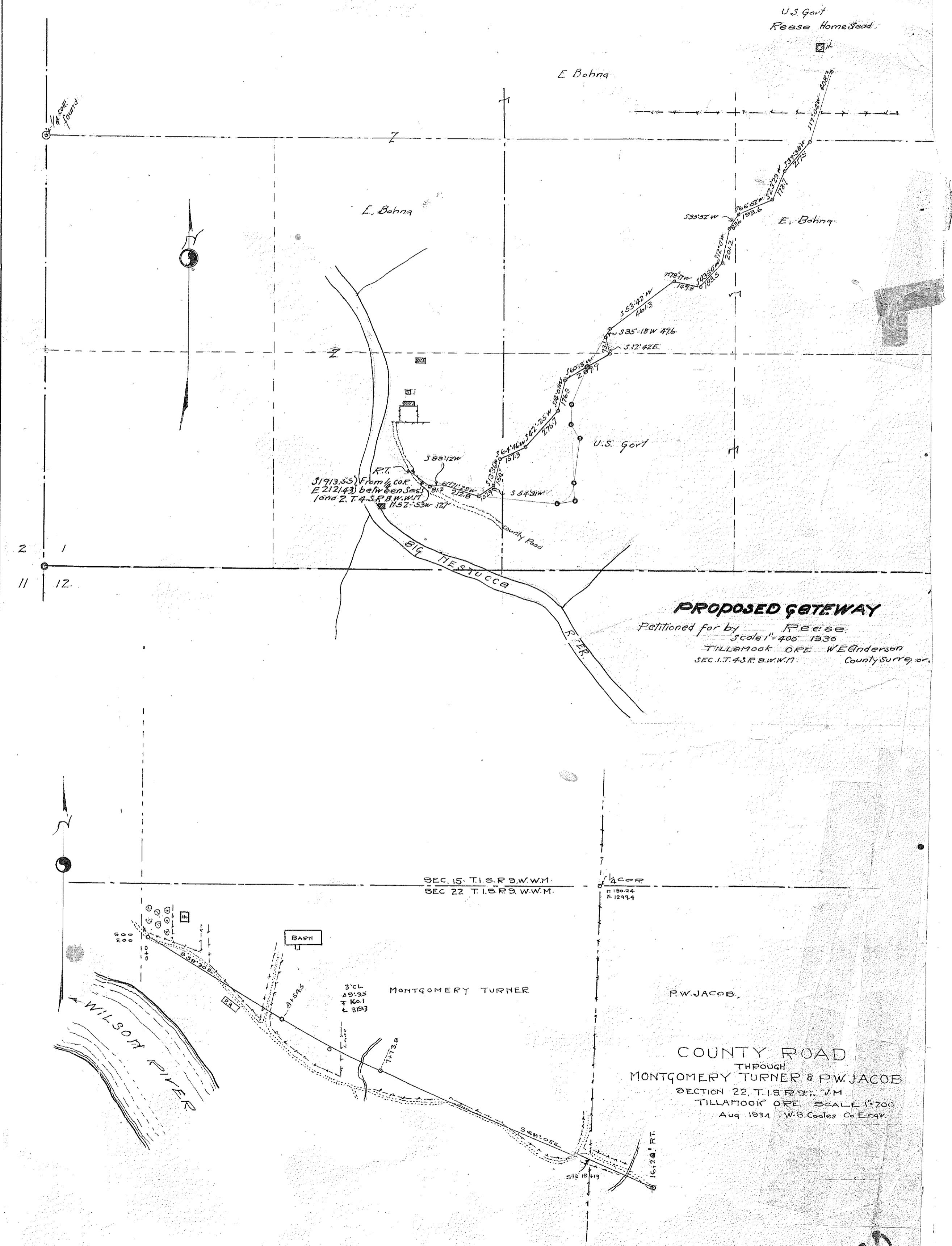


PROPOSED COUNTY ROAD
 Petitioned for by G.W. Parson Jan. 1924
 Scale 1" = 200'
 W.B. Coates Co. Engr.



PROPOSED GATEWAY
 Petitioned for by Reese
 Scale 1" = 400' 1930
 TILLAMOOK ORE. W.E. Anderson
 SEC. 1, T. 43 N. R. 9 W. 11
 County Surveyor

COUNTY ROAD
 THROUGH
 MONTGOMERY TURNER & R.W. JACOB
 SECTION 22, T. 18 N. R. 9 W. 11
 TILLAMOOK ORE. SCALE 1" = 200'
 Aug 1934 W.B. Coates Co. Engr.