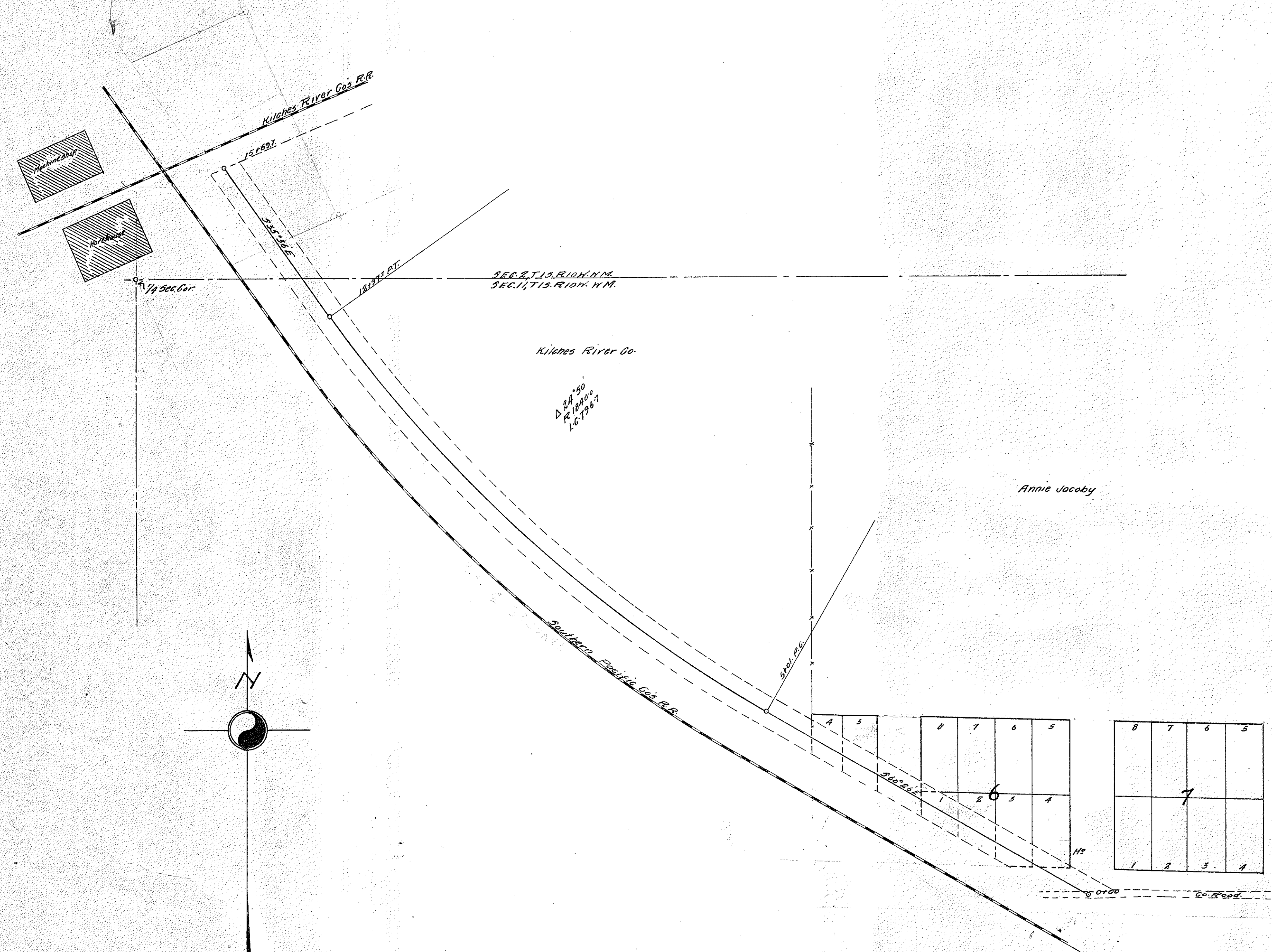
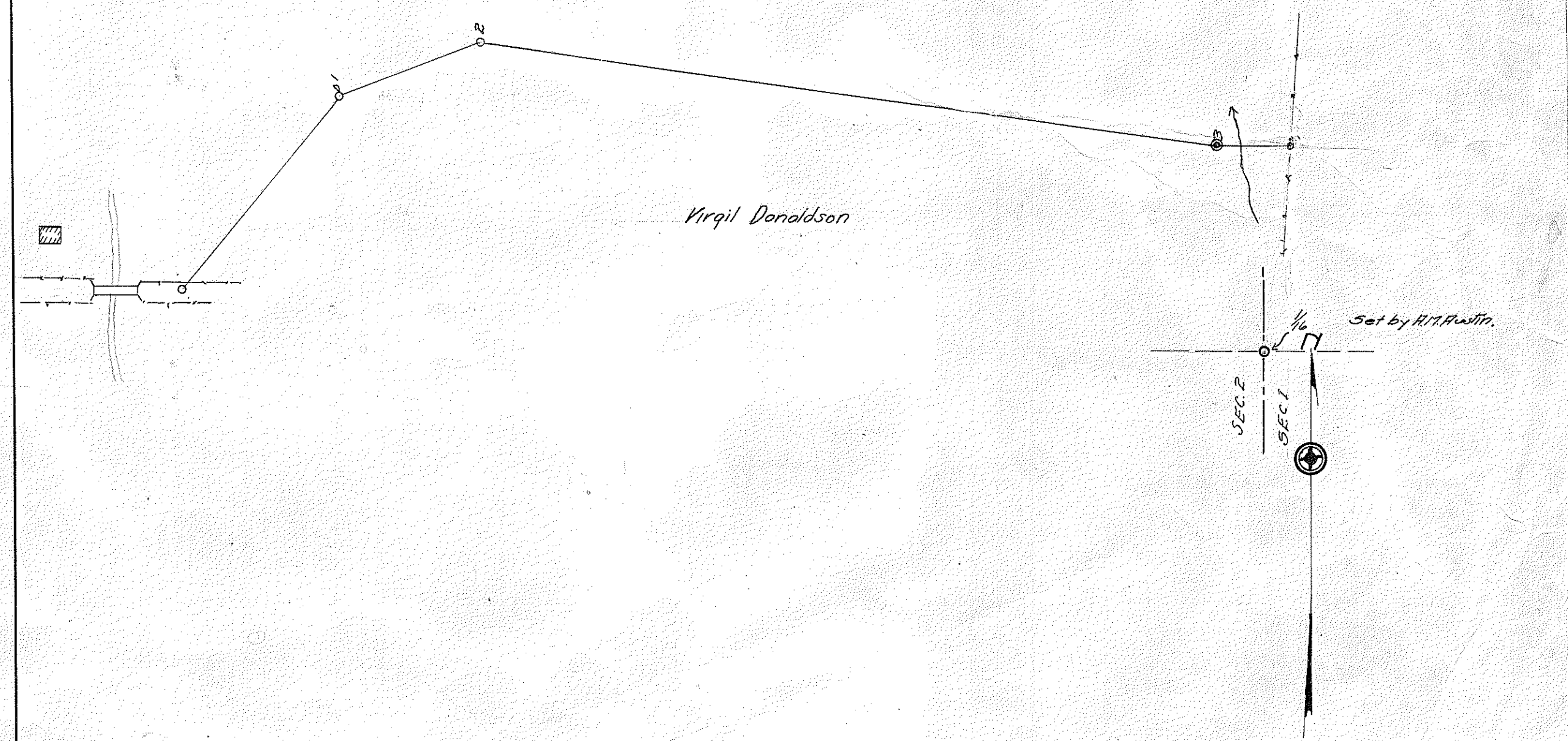
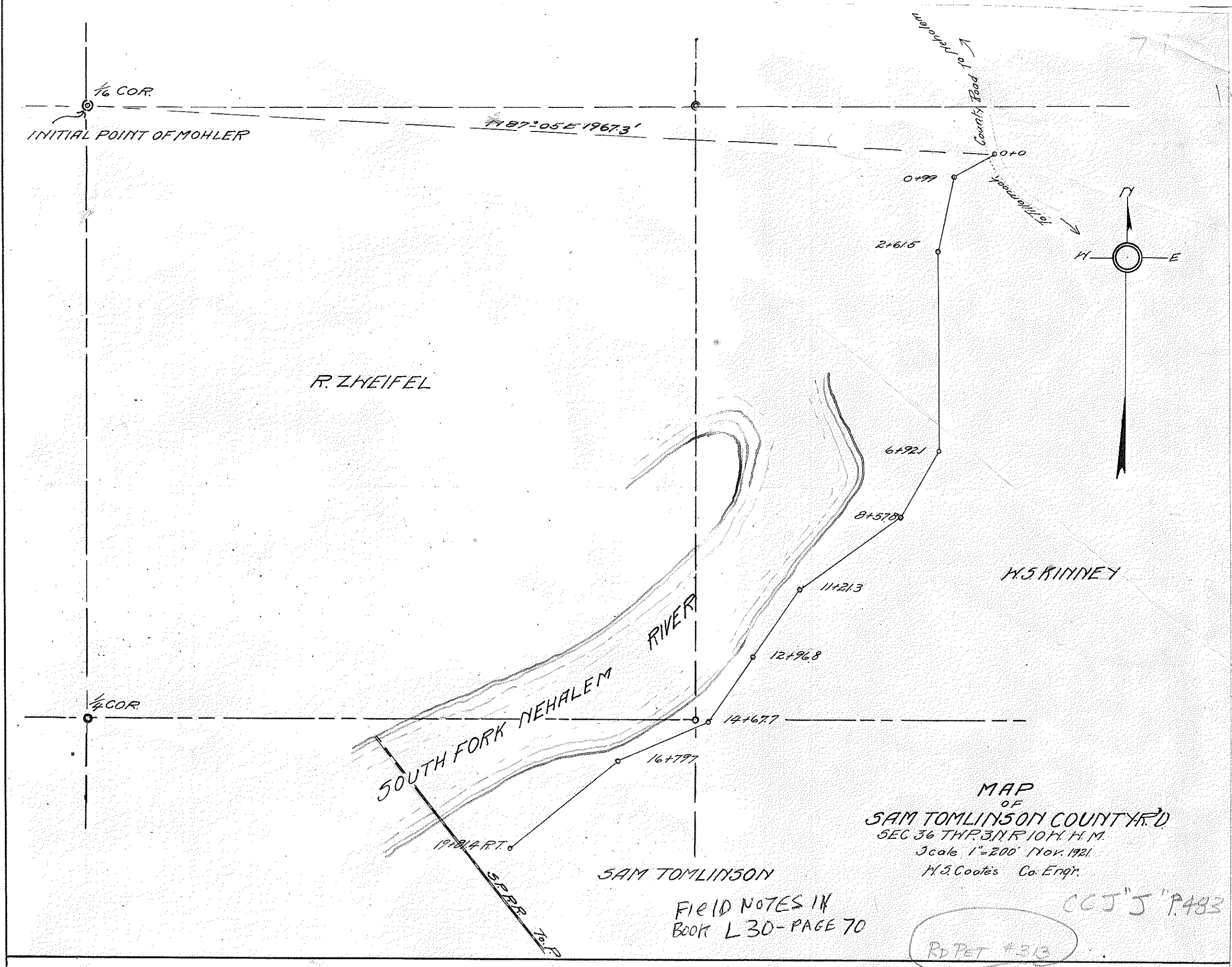


(See Book "T-27" P. 125-7)
"A-131"



See Book "J" PAGE 273 C.C.J.
PAGE 262

MAP
SHOWING
PROPOSED CO. ROAD
AT
IDAVILLE
SECS 2, 4, 11, T. 15. R. 10 W. M.M.
SCALE 1" = 100'



0	426.4	173°07E
01	257.3	174°03E
02	124.5	581°28E
03	131.5	588°07E

MAP
SHOWING
PROPOSED EXTENSION
OF
MARIAM CHANCE COUNTY ROAD
Scale 1" = 200'
H.S. Cooley Co. Engr. April 1922

77