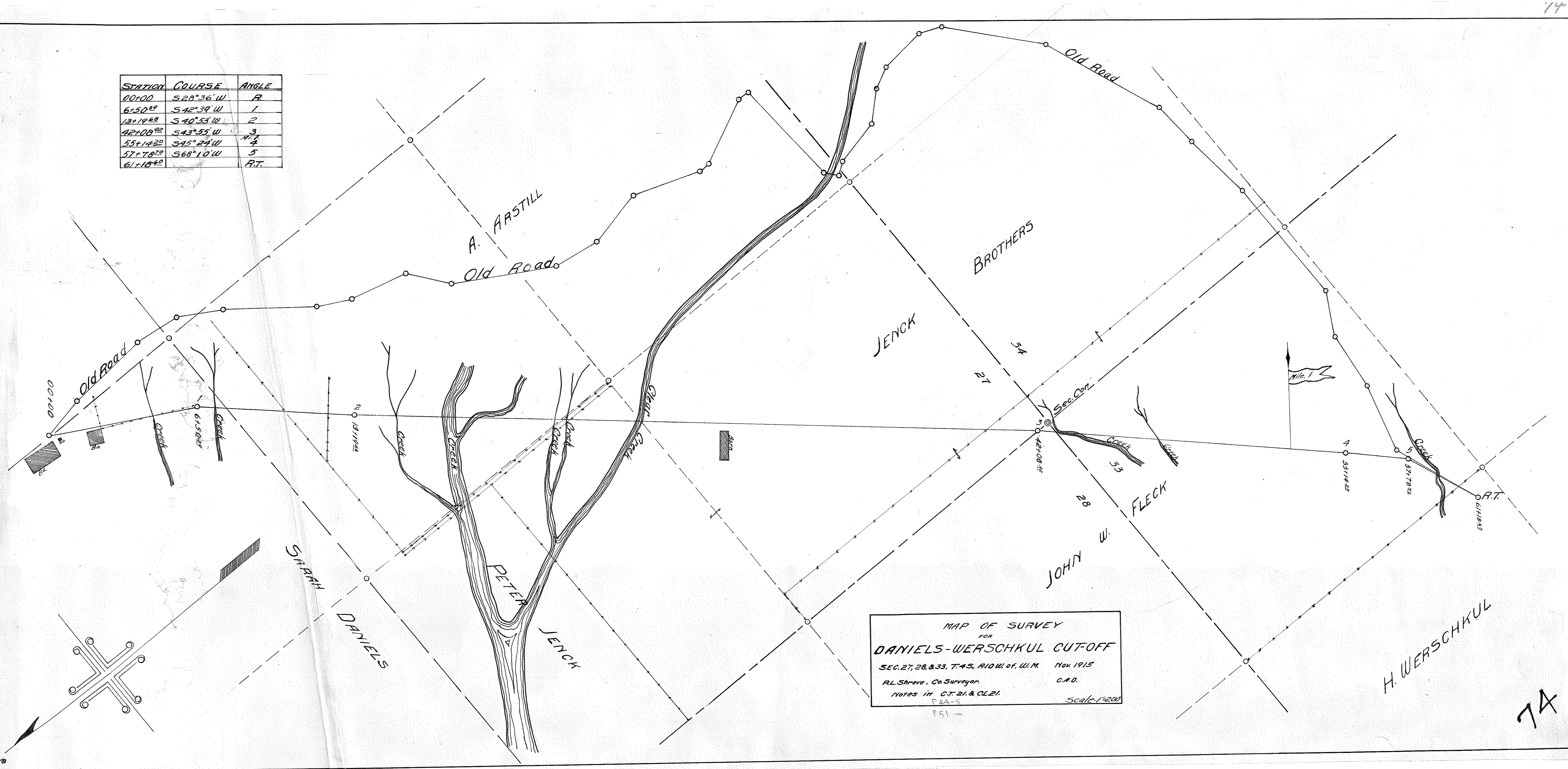


STATION	COURSE	ANGLE
00+00	S28°36'W	R
6150 <sup>89</sup>	S42°39'W	1
13+19 <sup>68</sup>	S40°53'W	2
42+08 <sup>92</sup>	S43°55'W	3
55+14 <sup>20</sup>	S45°24'W	N.T.
57+78 <sup>20</sup>	S68°10'W	5
61+18 <sup>60</sup>		R.T.



MAP OF SURVEY  
 FOR  
**DANIELS-WERSCHKUL CUT-OFF**  
 SEC. 27, 28, & 33, T. 4S, R. 10W of W.M. Nov 1915  
 R.L. Shreve, Co. Surveyor. C.A.D.  
 Notes in C.T. 21 & CL 21. P. 24-5  
 Scale 1"=200'