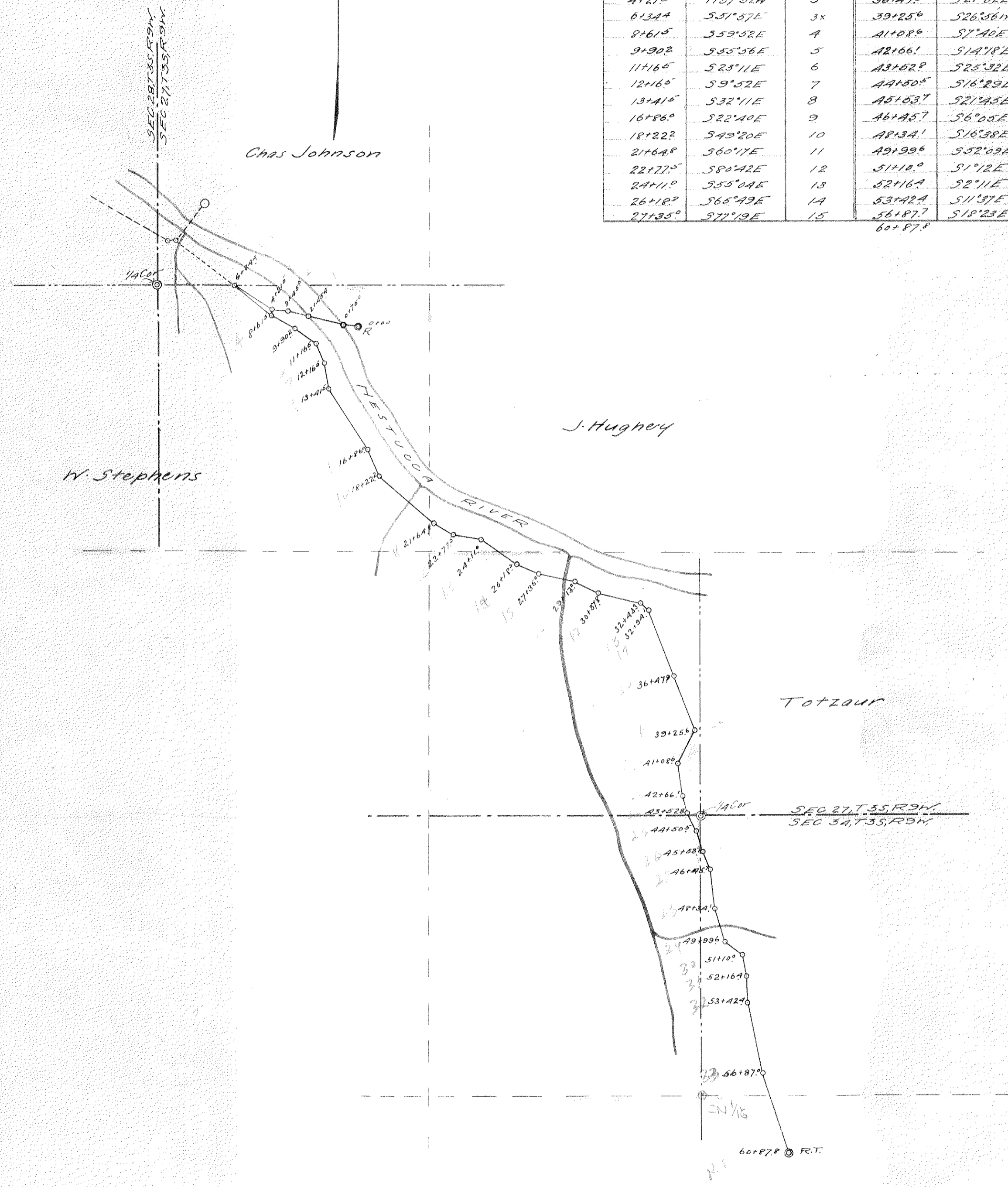
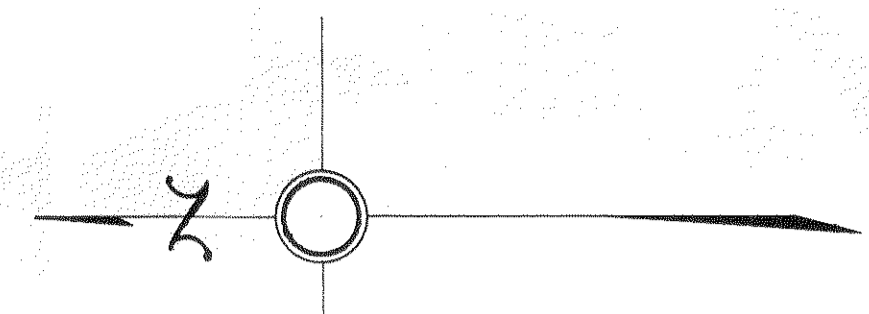


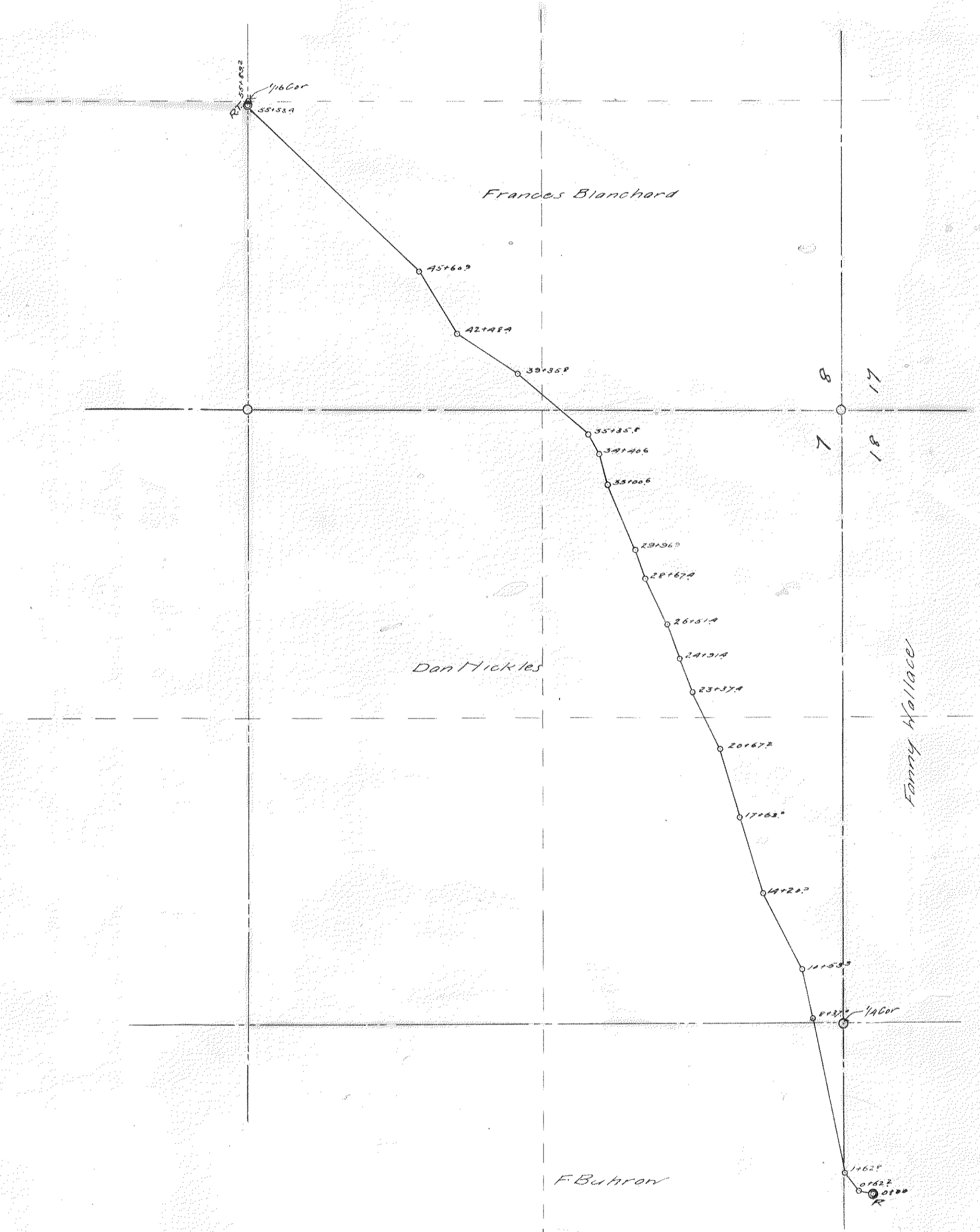
Sta	Course	Angle	Sta	Course	Angle
0+00	N82°33'N	R	29+18"	S64°33'E	16
0+705	N77°33'W	1x	30+32"	S76°0'E	17
2+220	N75°18'W	1	32+43"	S48°24'E	18
3+455	N87°00'W	2	32+94'	S21°02'E	19
4+215	N67°52'W	3	36+472	S21°02'E	20
6+344	S81°57'E	3x	39+250	S26°36'N	21
8+615	S59°52'E	4	41+084	S7°40'E	22
9+902	S35°56'E	5	42+661	S14°18'E	23
11+165	S23°11'E	6	43+628	S25°32'E	24
12+165	S9°52'E	7	44+805	S16°29'E	25
13+415	S32°11'E	8	45+637	S21°45'E	26
16+986	S22°40'E	9	46+457	S6°25'E	27
18+222	S49°20'E	10	47+341	S16°38'E	28
21+648	S60°11'E	11	49+996	S52°09'E	29
22+725	S90°42'E	12	51+110"	S1°12'E	30
24+110	S35°04'E	13	52+162	S2°11'E	31
26+180	S65°49'E	14	53+424	S11°51'E	32
27+350	S77°19'E	15	54+877	S18°23'E	33
			60+878		R.T.



MAP  
**F.J. KUMM CO ROAD**  
 SEC'S 27, 34, 35, R9W.  
 U.G. JACKSON, CO SURV. April, 1914.  
 SCALE 1"=400'



Sta	Course	Angle	Sta	Course	Angle
0+00	N12°32'E	R	28+674	N70°59'E	12
0+622	N53°55'E	2	29+362	N67°55'E	13
1+628	N73°12'E	5	33+000	N73°25'E	14
8+370	N78°36'E	4	34+400	N61°15'E	15
10+533	N68°22'E	5	35+358	N61°25'E	16
14+203	N73°41'E	6	39+358	N34°35'E	17
17+630	N74°05'E	7	42+454	N59°13'E	18
20+622	N64°21'E	8	48+600	N44°26'E	19
23+374	N69°42'E	9	55+534	N43°44'E	20
24+914	N70°16'E	10	58+892		R.T.
26+514	N65°25'E	11			



MAP  
**BLANCHARD CO ROAD**  
 SEC'S 7, 18, 8, T33R9W.  
 U.G. JACKSON, CO SURV. April, 1914.  
 SCALE 1"=400'