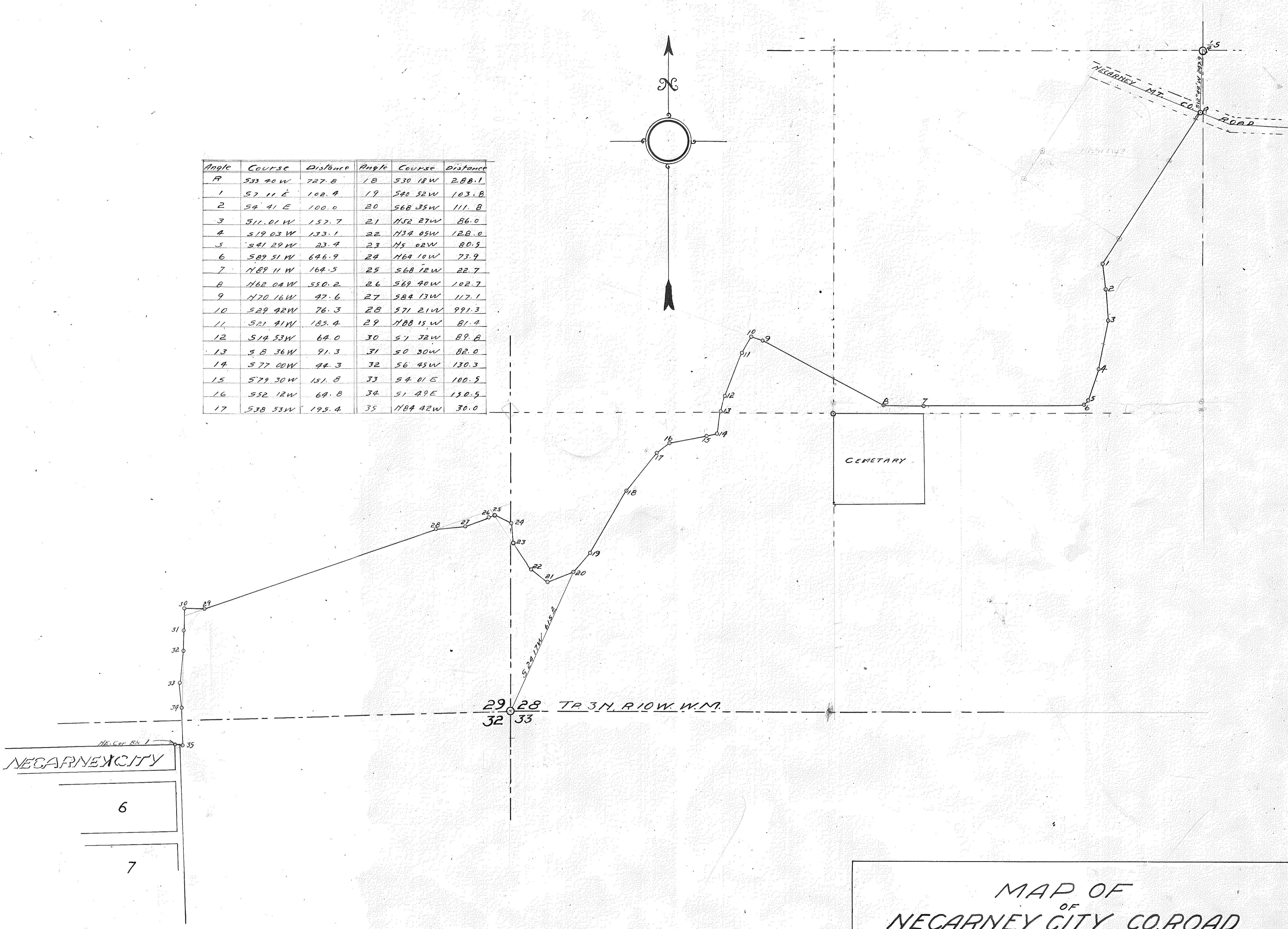
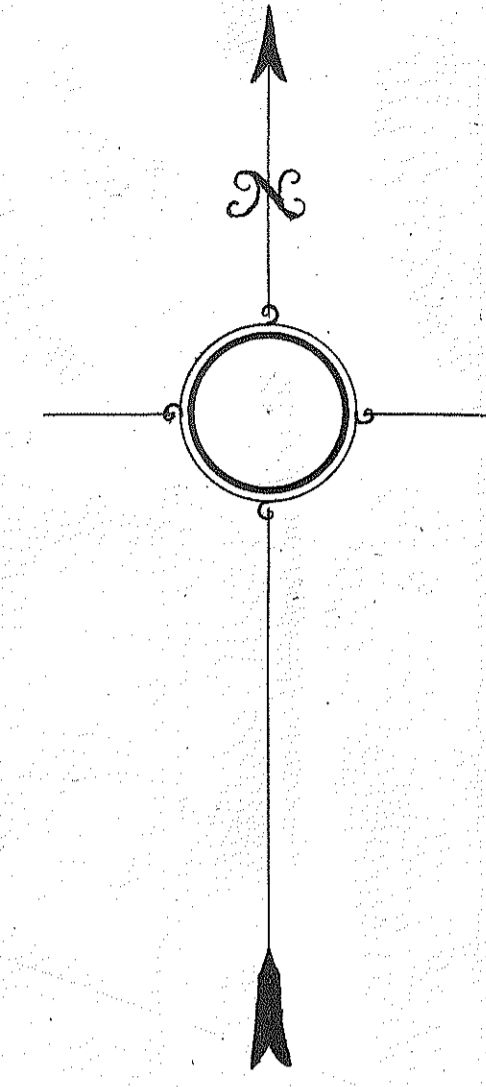


Angle	Course	Distance	Angle	Course	Distance
A	S33 40 W	727.8	18	S30 18 W	288.1
1	S7 11 E	102.4	19	S40 52 W	103.8
2	S4 41 E	100.0	20	S68 35 W	111.8
3	S11 01 W	157.7	21	N52 27 W	86.0
4	S19 03 W	133.1	22	N34 09 W	128.0
5	S41 29 W	23.4	23	N5 02 W	80.5
6	S89 51 W	646.9	24	N64 10 W	73.9
7	N89 11 W	164.5	25	S68 12 W	22.7
8	N62 04 W	550.2	26	S69 40 W	102.7
9	N70 16 W	42.6	27	S84 13 W	117.1
10	S29 42 W	76.3	28	S71 21 W	991.3
11	S21 41 W	185.4	29	N88 15 W	81.4
12	S14 53 W	64.0	30	S7 32 W	89.8
13	S 8 36 W	91.3	31	S0 30 W	82.0
14	S 77 00 W	44.3	32	S6 45 W	130.3
15	S 79 30 W	151.8	33	S4 01 E	100.5
16	S52 12 W	69.8	34	S1 49 E	150.5
17	S38 53 W	195.4	35	N84 42 W	30.0



MAP OF
 OF
 NEGARNEY CITY CO. ROAD
 TILLAMOOK COUNTY ORE.
 SECS. 28, 29 & 32, TP 3 N, R 10 W, W.M.
 Scale 1"=200' AUG. 1911.
 U. G. Jackson, Co. Surv.