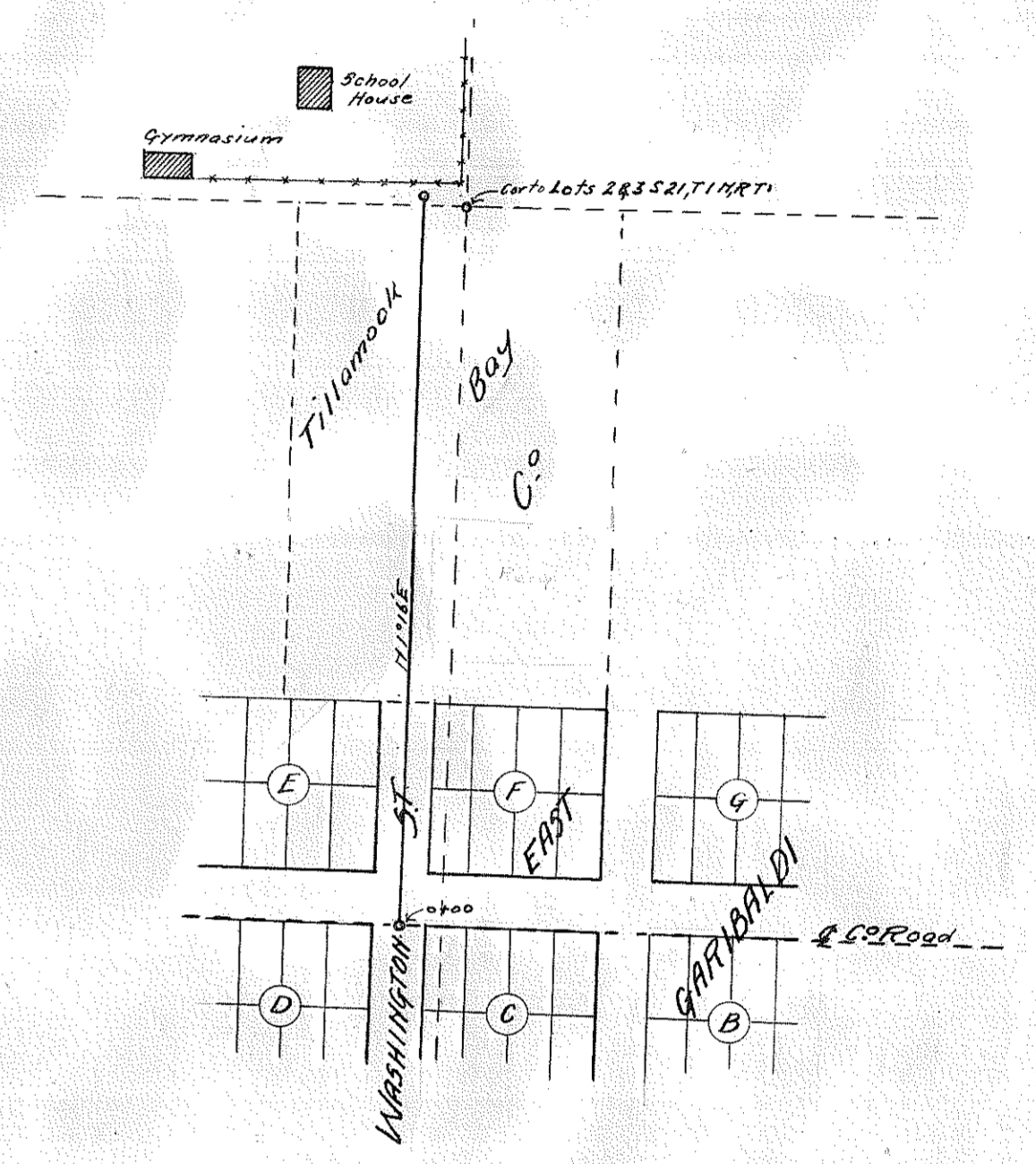
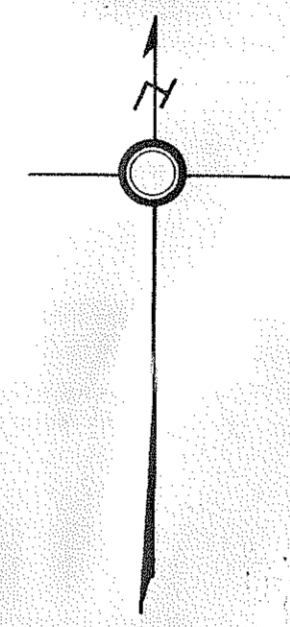


| Sta      | Course   | Sta    | Course   | Sta     | Course    |
|----------|----------|--------|----------|---------|-----------|
| 0100     | 382°50'E | 53124' | 115°59'E | 83124'  | 1165°22'E |
| 0168'    | 110°20'W | 57126' | 111°39'E | 86126'  | 1161°19'E |
| 13125'   | 178°15'E | 59128' | 113°34'E | 91128'  | 1159°44'E |
| 14721.5' | 176°39'E | 61130' | 116°38'E | 93130'  | 583°55'E  |
| 17119'   | 177°36'E | 63131' | 112°14'W | 94131'  | 1173°20'E |
| 22130'   | 172°20'E | 64135' | 113°24'W | 97135'  | 1171°41'E |
| 24100'   | 170°56'E | 67137' | 115°24'W | 100137' | 1162°57'E |
| 28121'   | 173°51'E | 70138' | 117°21'W | 103138' | 1184°02'E |
| 31123'   | 172°59'E | 71132' | 117°24'W | 105132' | 582°49'E  |
| 32125'   | 173°47'E | 73133' | 118°10'E | 108133' | 1187°55'E |
| 40112'   | 178°37'E | 75139' | 118°37'E | 113139' | 587°07'E  |
| 44131'   | 170°30'E | 77121' | 117°59'E | 116139' | 1167°14'E |
| 48131'   | 173°24'E | 80122' | 115°14'E | 118131' | 1187°37'E |
| 51124'   | 173°29'E | 81124' | 117°57'E | 120131' | 1182°20'E |
|          |          |        |          | 123177' | 280°42'E  |
|          |          |        |          | 126103' | 587°17'E  |
|          |          |        |          | 131103' | 1175°39'E |
|          |          |        |          | 137105' | 1166°37'E |
|          |          |        |          | 140148' | 1139°55'E |
|          |          |        |          | 141135' | 578°42'E  |
|          |          |        |          | 144107' | 582°29'E  |
|          |          |        |          | 145136' | 1172°26'E |
|          |          |        |          | 147129' | 767°      |



Filed May 3, 1918.  
 Quinn Harrison  
 Co. Clerk.  
 (60' R/W)  
 see CCJ. "I" Page 454  
 (Childs Record).  
 See Road Book 39-#279 for lines of this map.

Filed May 3, 1918.  
 Quinn Harrison  
 Co. Clerk.

**MAP**  
 SHOWING  
**LOCATION OF COUNTY ROAD**  
**RIVERDALE CHEESE FACTORY UP KILCHES RIVER**  
 SECS 6, T15R3W, S132T11N, R3W, W.M.  
 W.S. Coates, Co. Surv.  
 APRIL, 1918.  
 SCALE 1"=400'

**MAP**  
 OF  
**CO ROAD TO GARIBALDI SCHOOL HOUSE**  
 SEC 21, T11N, R10W, W.M.  
 W.S. Coates, Co. Surv.  
 APRIL, 1918.  
 SCALE 1"=200'