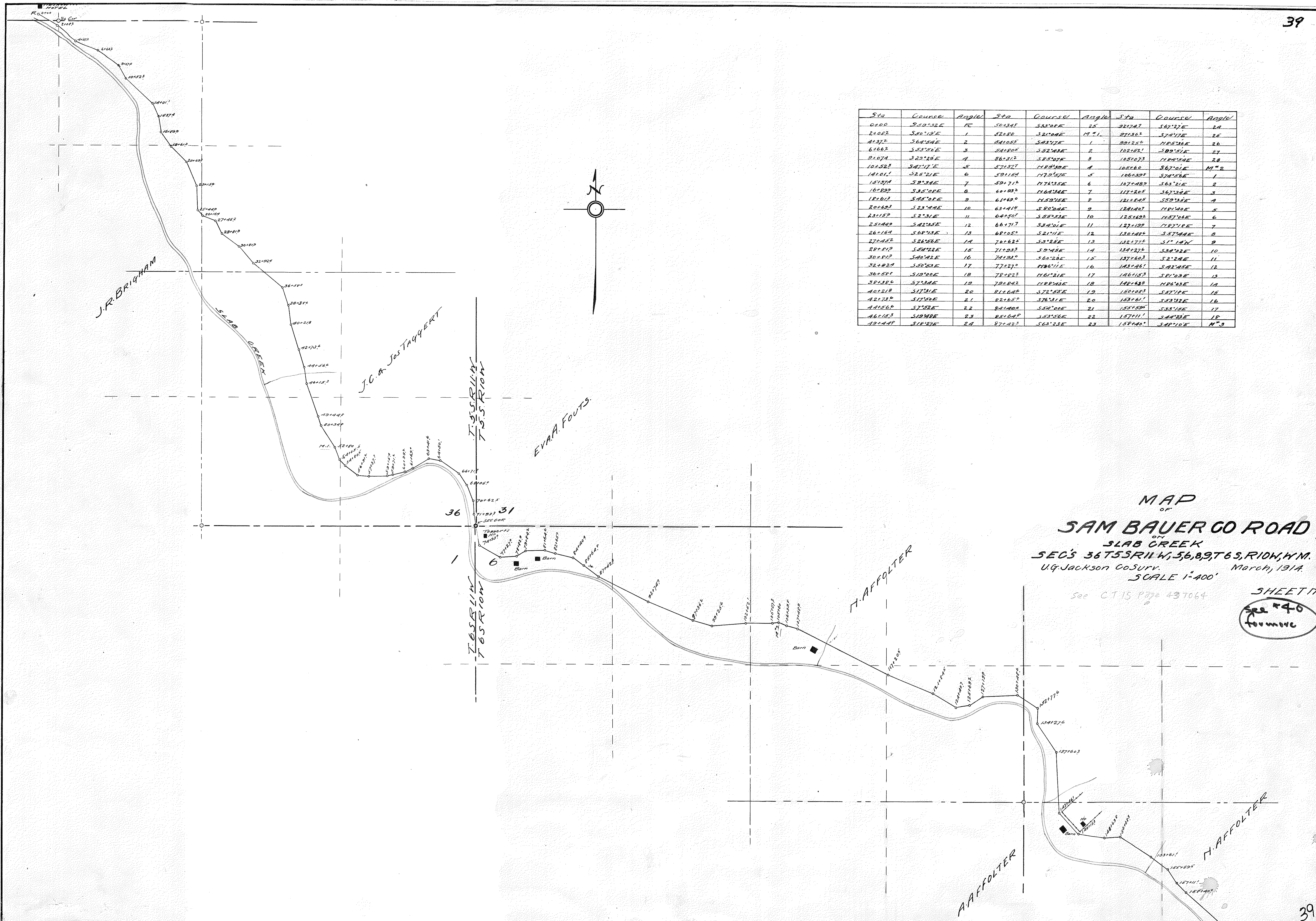
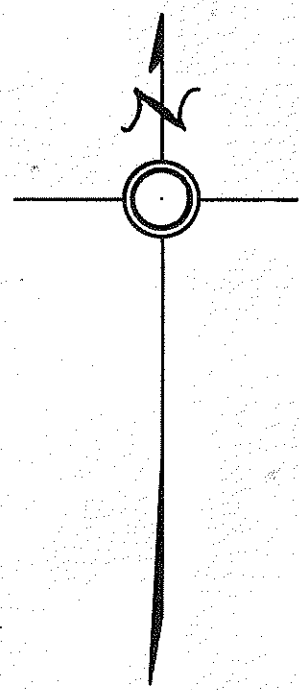


Sta	Course	Angle	Sta	Course	Angle	Sta	Course	Angle
0+00	S53°32'E	PC	5+34.1	S33°06'E	25	9+24.7	S62°27'E	24
2+02.2	S80°18'E	1	5+80.0	S21°06'E	19° 1	9+70.2	S74°17'E	25
4+37.2	S64°54'E	2	6+105.2	S83°12'E	1	9+82.6	N45°34'E	26
6+66.2	S53°56'E	3	6+180.5	S82°08'E	2	10+182.1	S89°51'E	27
9+07.4	S23°28'E	4	6+512.2	S82°07'E	3	10+673	N44°54'E	28
10+52.3	S41°17'E	5	6+537.7	N48°40'E	4	10+860	S67°01'E	M ²
14+01.1	S25°21'E	6	6+511.4	N72°57'E	5	10+680	S74°56'E	1
16+57.4	S9°34'E	7	6+571.2	N76°35'E	6	10+748.9	S63°21'E	2
16+82.0	S35°06'E	8	6+600.5	N64°34'E	7	11+285	S67°34'E	3
18+01.2	S45°06'E	9	6+619.9	N58°16'E	8	12+184.5	S59°35'E	4
20+62.3	S23°44'E	10	6+641.4	S80°04'E	9	12+140.7	N41°00'E	5
23+15.9	S23°31'E	11	6+678.0	S58°53'E	10	12+549.2	N47°04'E	6
25+42.0	S42°35'E	12	6+671.7	S32°01'E	11	12+718.9	N47°11'E	7
26+16.4	S68°14'E	13	6+605.0	S21°11'E	12	13+044.9	S57°44'E	8
27+45.2	S26°56'E	14	7+062.2	S3°26'E	13	13+277.6	S1°14'N	9
28+81.2	S44°22'E	15	7+103.3	S9°45'E	14	13+127.6	S34°32'E	10
30+81.2	S40°42'E	16	7+124.0	S60°28'E	15	13+603	S1°24'E	11
32+82.4	S50°53'E	17	7+27.0	N46°11'E	16	14+246.1	S42°45'E	12
36+58.1	S10°00'E	18	7+82.3	N61°21'E	17	14+618.2	S81°33'E	13
39+38.6	S7°44'E	19	7+842.2	N48°43'E	18	14+648	N46°43'E	14
40+21.8	S17°31'E	20	8+164.0	S72°55'E	19	15+003	S67°15'E	15
42+74.4	S17°52'E	21	8+165.0	S76°31'E	20	15+761	S53°32'E	16
44+86.9	S7°58'E	22	8+180.0	S52°00'E	21	15+559	S38°55'E	17
46+16.3	S10°48'E	23	8+164.0	S63°56'E	22	15+711	S44°23'E	18
49+44.8	S18°26'E	24	8+22.3	S63°33'E	23	15+740	S48°10'E	M ³



MAP
OF
SAM BAUER CO ROAD
ON
SLAB CREEK
SECS 36 T55R11W, 56, 8, 9, T6S, R10W, W.M.
U.G. Jackson Co. Surv. March, 1914.
SCALE 1"=400'

See CT 15 P 778 437064
SHEET 11
See #40
for more