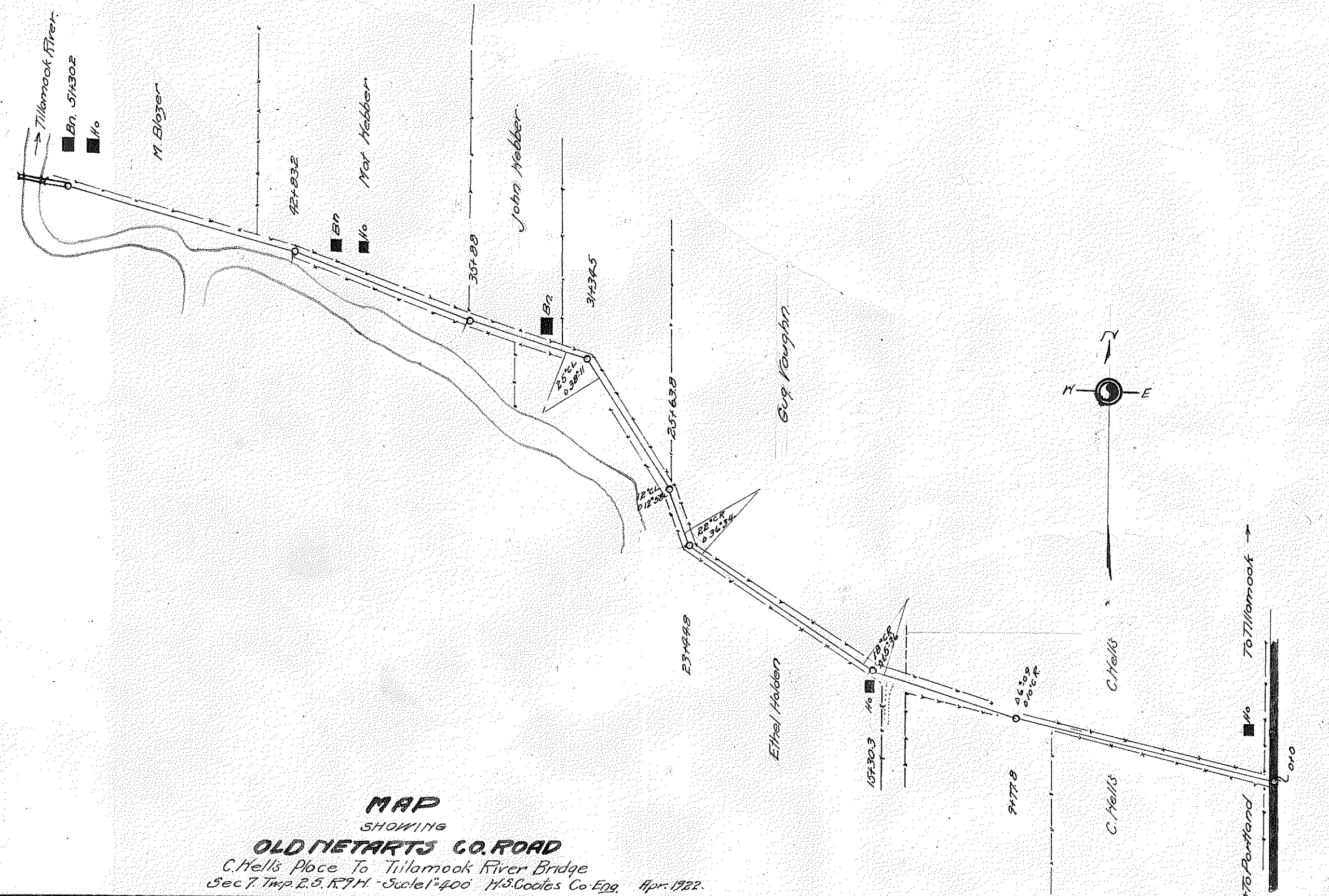


Sta	Course	Sta	Course
01.00	58°30'N	21.80	57°33'E
61.53	51°40'N	26.20	55°33'N
111.53	52°34'N	28.32	51°43'N
121.23	54°04'N	29.32	53°08'N
131.27	53°27'N	32.42	52°08'N
161.81	52°05'N	32.57	53°02'N
181.88	51°03'E	47.95	57°32'N 1/4 Sec

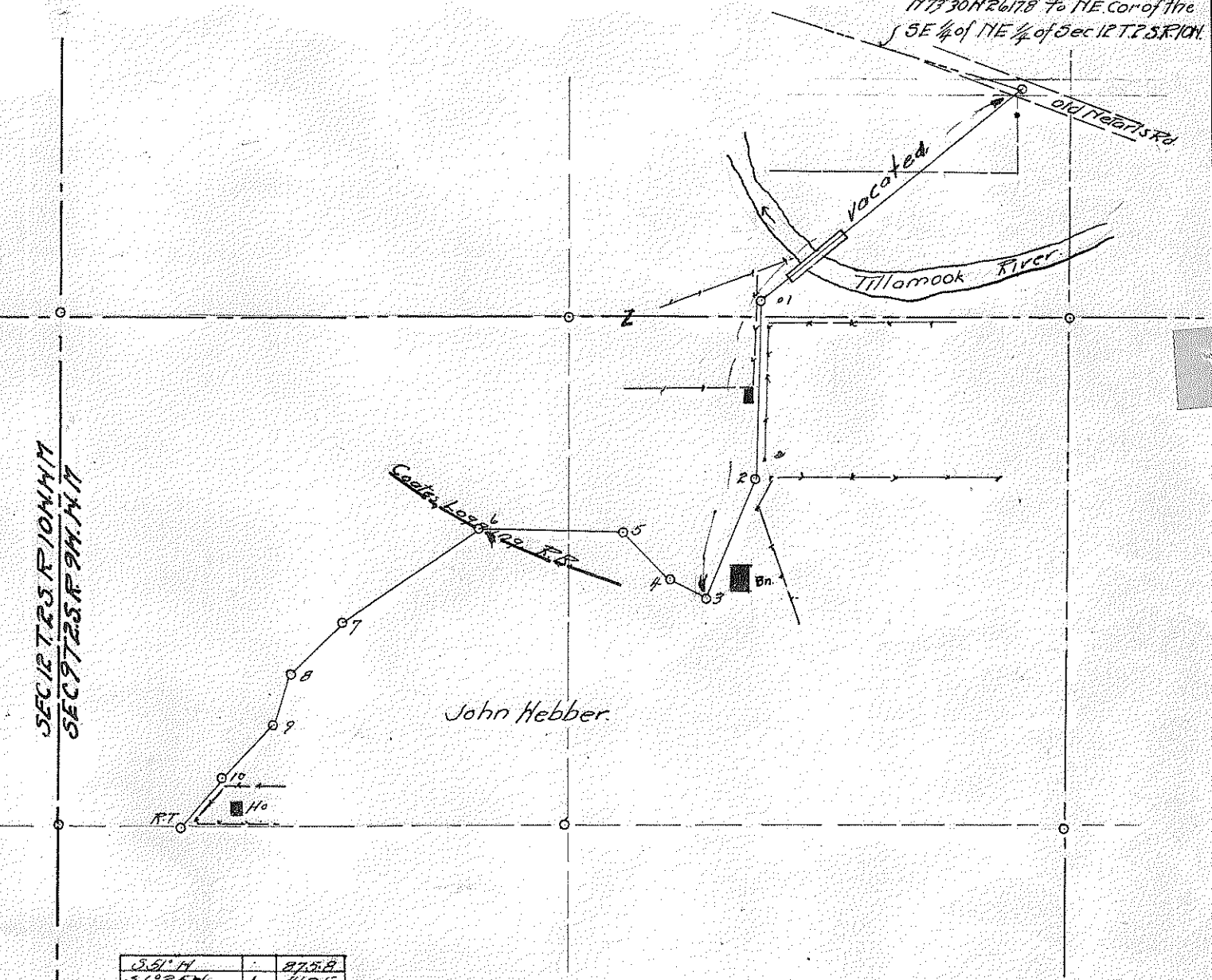
MAP
SHOWING
LOCATION of COUNTY ROAD
SECS 29, 30 T33, R9W1M.
W.S. Coates Co. Surv. May 1918.
SCALE 1"=400'

See "L-29-
paper 8-15"



MAP
SHOWING
OLD METARTS CO. ROAD
C. Heils Place To Tillamook River Bridge
Sec 7, Twp 25, R7W - Scale 1"=200' H.S. Coates Co. Eng. Apr 1922.

Sta	Course	Sta	Course
01.0	176°30'N	201.63	172°30'N
21.27	171°30'N	31.34	170°32'N
33.30	155°36'N	33.28	166°30'N
23.44	119°20'N	42.18	170°02'N



Sta	Course	Sta	Course
1.51	51°30'N	1	560.5
1.17	51°30'N	2	340.8
1.24	52°27'N	3	34.6
2.08	51°07'N	4	172.7
1.00	50°50'N	5	430.3
1.44	51°04'N	6	18.0
1.17	52°27'N	7	124.6
1.02	51°07'N	8	150.7

MAP
OF
John Hebban County Road
Sec 29, 30 T33, R9W1M
Scale 1"=400' Oct 1922
H.S. Coates Co. Eng.

See Book 35 p 1 for field notes